

SP101

Pushbutton Switches

RoHS Compliant



Features

1. Sharp Tactile Feel

Snap action mechanism provides light tactile feel.

2. Gold-Plated Contacts for Low Current Applications

3. Compatible with PC Board Mount and Snap-in Panel Mount

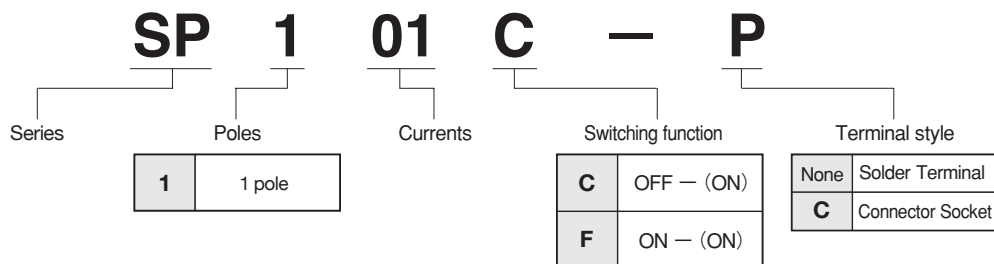
4. 3 Types of Terminals

Terminal styles are available in Solder terminal, and connector socket (EHR-5 from JST).

Specifications

Rating	60mA 30VDC Max.
Initial contact resistance	50mΩ max. (1.5mA 200μVAC)
Dielectric strength	500VAC 1 minute
Initial insulation resistance	1,000MΩ min. (500VDC)
Electrical life	50,000 operations
Operating force	2.94±0.98N
Operating temperature range	−20~+85°C
Storage temperature range	−40~+85°C

Part Numbering



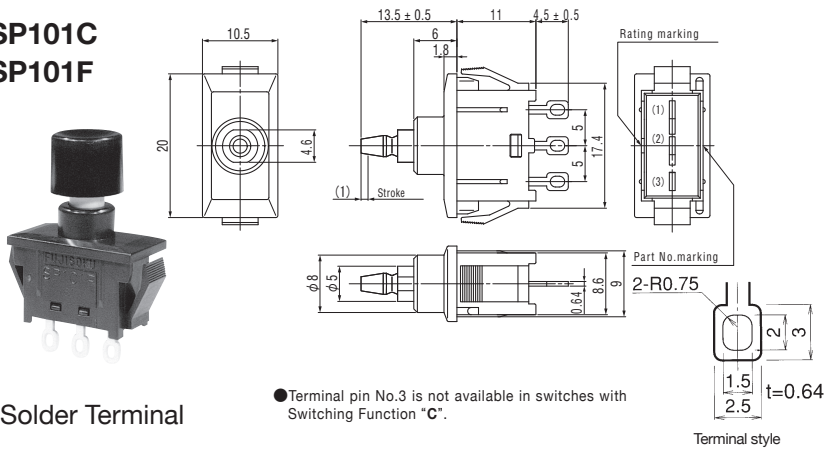
Optional Accessories

Part Name		Color Button		
Dimension A		φ 8	φ 10	φ 15
Dimension B		7.5	8	10
 (Polyamide resin)	White	140000481420	140000480082	140000480088
	Red	140000481421	140000480083	140000480089
	Black	140000481422	140000480081	140000480090
	Gray	140000481423	140000480084	140000480091

Table of Part Numbers

Terminal style	Switching function	
	OFF — (ON)	ON — (ON)
Solder Terminal	★SP101C	—
Connector Socket	—	SP101F—C

SP101C
SP101F

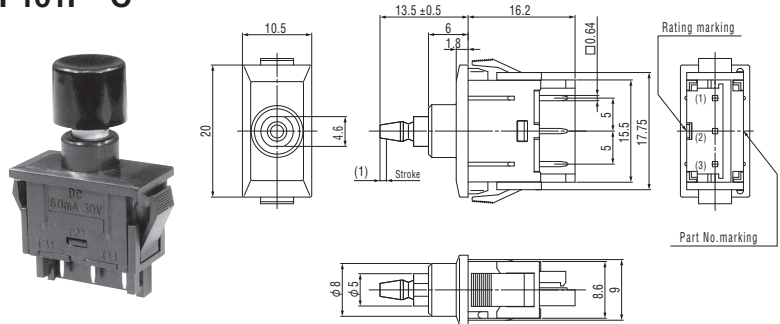


Solder Terminal

Switching function		
Part No.	OFF	(ON)
Connecting terminals	—	1—2
Part No.	ON	(ON)
Connecting terminals	1—3	1—2

(ON) : Momentary.

SP101F—C

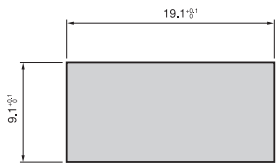


Connector Socket

※ Mating connector : J.S.T.CO.,LTD connector **EHR—5** series

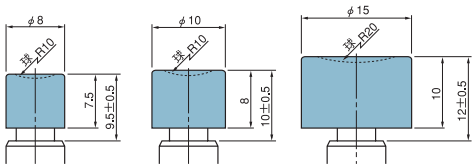
■ Panel Cut-Out Dimensions

Panel thickness : 1~2 mm



The edges on the back of the cut-out panel should be squared so that the switch box bites the panel firmly.

■ Color Button Mounting Dimensions



■ Soldering Specifications

(1) Manual Soldering

Device: Soldering iron

380°C, Max.; 3 seconds, Max.

■ Flux Cleaning

(1) Solvent :Fluorine or Alcohol type.

(2) The **SP101** series are not washable. To wash the PC board, clean the soldering surface of the PC board with a brush so that the switch is not exposed to the cleaning solution.

Mouser Electronics

Authorized Distributor

Click to View Pricing, Inventory, Delivery & Lifecycle Information:

Nidec:

[140000480081](#)