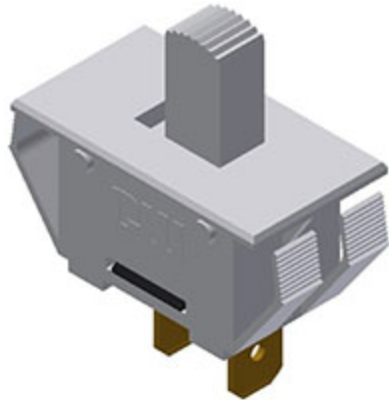


CW INDUSTRIES

130 James Way


Southampton, PA 18966

Phone: 215-355-7080 • Fax: 215-355-1088

Email: info@cwind.com • Website: <http://www.cwind.com>**Item # G-2011-0038, 2000 Series Power Slide Switches**
[Check Distributor Stock](#) · [Specifications](#) · [Materials](#) · [Operating Standards](#)
Check Distributor Stock

Check Distributor Stock

[DIGI-KEY](#)**Specifications**

| | |
|--|--|
| Circuitry | SPST |
| Switch Function | ON-OFF |
| Electrical Ratings¹ | 1/2 HP @ 125-250 VAC 10 A @ 250 VAC 13 A @ 125 VAC 5 A @ 14 V (T) 6 A @ 125 V (L) |
| Actuator Color | White |
| Housing Color | White |
| C1 | N |
| Mounting Polarization | Yes |
| Actuator Legend | None |
| Illumination | Non Illuminated |
| Terminal | 0.250" Wide |
| Listing Agency (Consult drawing or factory for specific rating)² |  Listed Agencies |
| Compliance |  |

¹ Additional ratings may be available, specify your unique requirements.

² Due to ongoing advancements, additional agency certifications may be available, contact us for more information.

Materials

| | |
|--------------------|-------------|
| Rocker Knob | Nylon 94V-2 |
|--------------------|-------------|

| | |
|--------------------------------------|---|
| Housing | Nylon 94V-2 |
| Terminal & Moving Contact | Copper Copper Alloy Silver Plated |
| Mounting | No hardware or tools needed; self locks into a 0.550" (13.97 mm) x 1.125" (28.58 mm) panel cutout. Acceptable panel thickness range from 0.025" (0.64 mm) to 0.180" (4.57 mm). CAUTION: Burr direction must be away from the direction of insertion. |

Operating Standards

Endurance:

100,000 cycles, no load, minimum

25,000 cycles at rated load minimum

Contact Resistance:

Less than 0.01 Ω at 10 mA

Operating Temperature:

From 65°C - 125°C maximum

High Voltage Dielectric Withstanding Voltage:

2,500 V, 60 Hz for 1 minute between mounting surface and circuit connections (min.)

Relative Humidity:

Insulation resistance > 10^3 M Ω after 100 hours at 95% R.H. and 50°C followed by 1 hour dry at ambient room conditions

Operating Standards described herein are general specifications that vary depending on the switch construction specified and end application. Contact us for specifications for specific models. Specifications subject to change without notice.

Mouser Electronics

Authorized Distributor

Click to View Pricing, Inventory, Delivery & Lifecycle Information:

[CW Industries:](#)

[G-2011-0038](#)