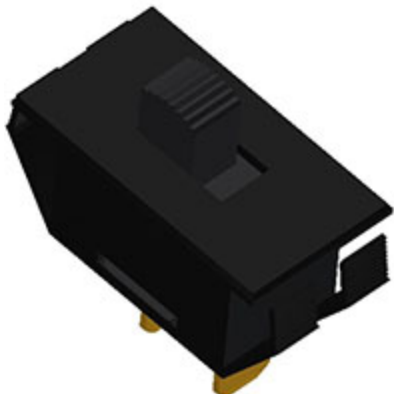




CW INDUSTRIES130 James Way
Southampton, PA 18966

Phone: 215-355-7080 • Fax: 215-355-1088

Email: info@cwind.com • Website: <http://www.cwind.com>**Item # G-2011-0000, 2000 Series Power Slide Switches**
[Check Distributor Stock](#) · [Specifications](#) · [Materials](#) · [Operating Standards](#)
Check Distributor Stock

Check Distributor Stock	DIGI-KEY
-------------------------	--------------------------

Specifications

Circuitry	SPST
Switch Function	ON-OFF
Electrical Ratings¹	1/2 HP @ 125-250 VAC 10 A @ 250 VAC 13 A @ 125 VAC 5 A @ 14 V (T) 6 A @ 125 V (L)
Actuator Color	Black
Housing Color	Black
C1	N
Mounting Polarization	N
Actuator Legend	None
Illumination	Non Illuminated
Terminal	0.250" Wide
Listing Agency (Consult drawing or factory for specific rating)²	 Listed Agencies
Compliance	

¹ Additional ratings may be available, specify your unique requirements.

² Due to ongoing advancements, additional agency certifications may be available, contact us for more information.

Materials

Rocker Knob	Nylon 94V-2
--------------------	-------------

Housing	Nylon 94V-2
Terminal & Moving Contact	Copper Copper Alloy Silver Plated
Mounting	No hardware or tools needed; self locks into a 0.550" (13.97 mm) x 1.125" (28.58 mm) panel cutout. Acceptable panel thickness range from 0.025" (0.64 mm) to 0.180" (4.57 mm). CAUTION: Burr direction must be away from the direction of insertion.

Operating Standards

Endurance:

100,000 cycles, no load, minimum

25,000 cycles at rated load minimum

Contact Resistance:

Less than 0.01 Ω at 10 mA

Operating Temperature:

From 65°C - 125°C maximum

High Voltage Dielectric Withstanding Voltage:

2,500 V, 60 Hz for 1 minute between mounting surface and circuit connections (min.)

Relative Humidity:

Insulation resistance > 10³ M Ω after 100 hours at 95% R.H. and 50°C followed by 1 hour dry at ambient room conditions

Operating Standards described herein are general specifications that vary depending on the switch construction specified and end application. Contact us for specifications for specific models. Specifications subject to change without notice.

Mouser Electronics

Authorized Distributor

Click to View Pricing, Inventory, Delivery & Lifecycle Information:

[CW Industries:](#)

[G-2011-0000](#)