

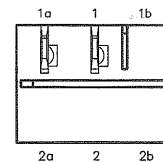
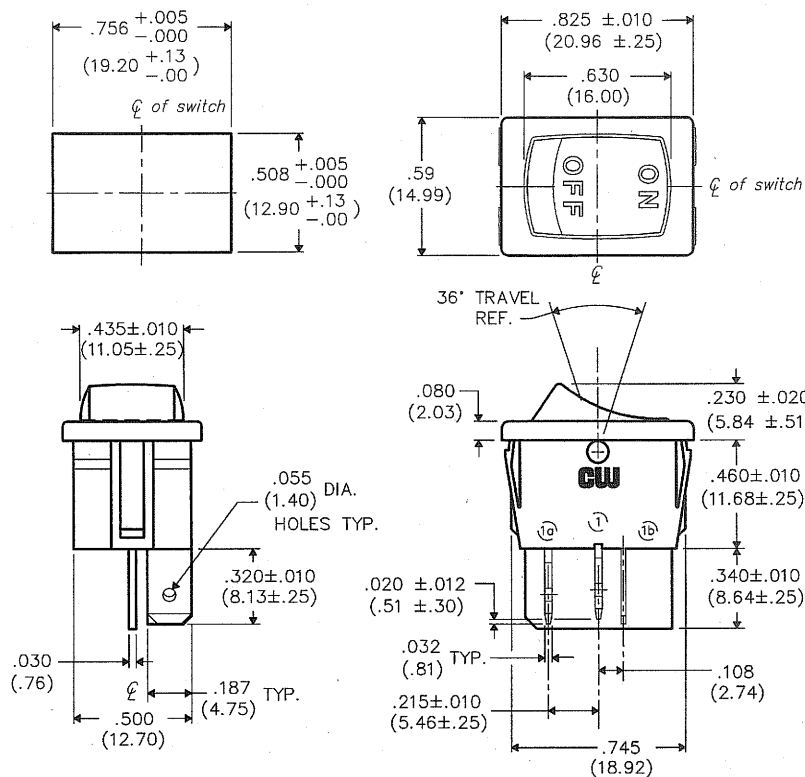
THIS INFORMATION IS CONFIDENTIAL AND PROPRIETARY TO CW INDUSTRIES INCORPORATED AND ITS AFFILIATES. IT MAY NOT BE DISCLOSED TO ANYONE OTHER THAN CW INDUSTRIES PERSONNEL WITHOUT WRITTEN AUTHORIZATION FROM CW INDUSTRIES INCORPORATED, SOUTHAMPTON, PENNSYLVANIA USA.

DIMENSIONS IN INCHES (MILLIMETERS)
DO NOT SCALE DRAWING

Dwg. No.

GRSV-4011-0137

PANEL PIERCING



**BOTTOM VIEW
(RELOCATED)**

MATERIAL:

ROCKER KNOB- Nylon 6/6, Color- Red

HOUSING- Nylon 6/6, Color- Black

MOVING CONTACT & TERMINALS- Copper Alloy/Micro-Finish

RATING: UL/CSA

8A. 125VAC 4A. 250VAC

3A. 277VAC

REVISIONS

RELEASED.
DCW 2-24-2012
FEB 28 2012

CW INDUSTRIES
Southampton, Pa. 18966

TOLERANCES UNLESS OTHERWISE SPECIFIED
2 Place Decimal $\pm .010$ METRIC
3 Place Decimal $\pm .005$ 1 Place Dec. $\pm .25$ mm
Angles $\pm 1^\circ$ 2 Place Dec. $\pm .13$ mm

Made for: CW IND.
Drawn by: DCW 2-24-2012
Checked by: G. Guld 2-24-12
Approval: G. Guld 2-24-12

Title: ON - OFF
SWITCH ASSEMBLY
(POP IN)
S.P.- S.T.

Division: SWITCH
Dwg. No. GRSV-4011-0137

MASTER

Mouser Electronics

Authorized Distributor

Click to View Pricing, Inventory, Delivery & Lifecycle Information:

[CW Industries:](#)

[GRSV-4011-0137](#)