

DIMENSIONS IN INCHES (MILLIMETERS)
DO NOT SCALE DRAWING

Dwg. No.

CWR-182-XX-0000

NOTES:

1. Dimensions are in inches; dimensions in () are millimeters.
2. Metric equivalents are given for general information only, and are based upon 1.00 inches equals (25.4) millimeters.
3. Unless otherwise specified, tolerances are $\pm .005$ (.13) for three place decimals, and $\pm .01$ (.3) for two place decimals.

MATERIALS:

PLASTIC PARTS — UL94V-0 thermoplastic (blue, standard) flame retardant.

CONTACTS — Phosphor bronze.

CONTACT PLATING— Selective gold plating, .000010 (min.) gold in mating area and .000100(min.) Tin Plating on the termination end, All over .000050 (min.) nickel.

OPERATING STANDARDS:

TEMPERATURE RATING — 120° C

CONTACT RATING — 1 ampere.

DIELECTRIC STRENGTH — Over 500V.D.C. at sea level.

CONDUCTORS ACCEPTED — 28-30 AWG solid or stranded.

INSULATION RESISTANCE — Greater than 5×10^{-9} ohms.

(OPEN POSITION)

.10 REF.
(2.5)

STRAIN RELIEF COVER
TO BE SUPPLIED
SEPARATE

PLAIN COVER

BASE

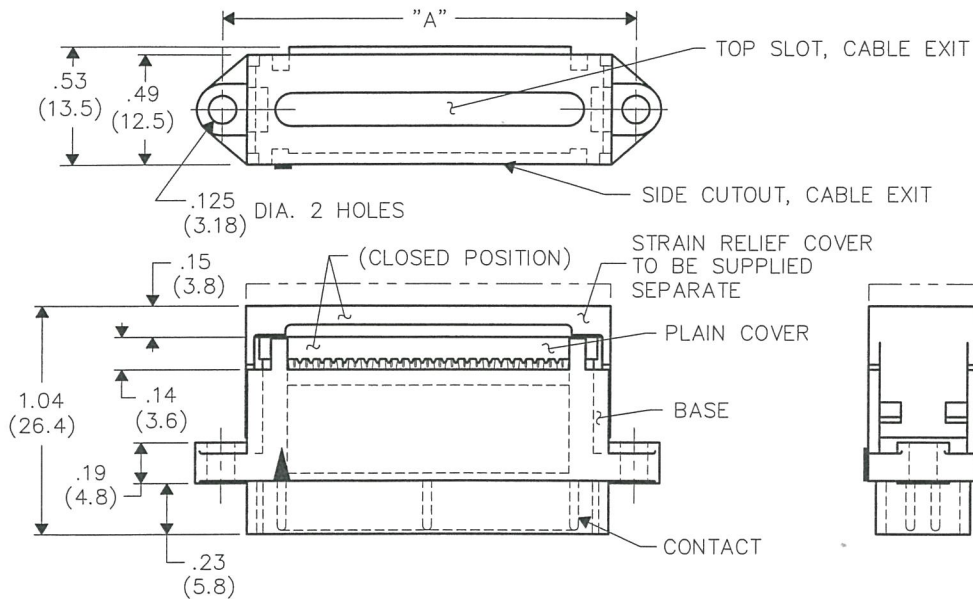
CONTACT

TOP SLOT, CABLE EXIT

SIDE CUTOUT, CABLE EXIT

.125
(3.18)
DIA. 2 HOLES

(CLOSED POSITION)



NO. CONTS.	A	B	C
9	.984 (24.99)	.434 (11.02)	.660 (16.76)
15	1.312 (33.32)	.760 (19.30)	.986 (25.04)
25	1.852 (47.04)	1.303 (33.10)	1.530 (38.86)
37	2.500 (63.50)	1.955 (49.66)	2.182 (55.42)

CUSTOMER DRAWING

B-FORMAT 2002

REVISIONS

RELEASED
DWG 12-03-2007
DEC 05 2007

ATTENTION

THIS DRAWING AND ITS ATTACHMENTS, IF ANY, ARE PROPRIETARY TO CW INDUSTRIES AND DESCRIBE DESIGNS THAT ARE CONFIDENTIAL AND MUST NOT BE DISCLOSED UNLESS AUTHORIZED, IN WRITING, BY AN OFFICER OF CW INDUSTRIES.....

PDF FILE MADE

CW INDUSTRIES
Southampton, Pa. 18966

TOLERANCES UNLESS OTHERWISE SPECIFIED

2 Place Decimal $\pm .010$ METRIC
3 Place Decimal $\pm .005$ 1 Place Dec. $\pm .25$ mm
Angles $\pm 1^\circ$ 2 Place Dec. $\pm .13$ mm

Made for: CW IND.

Drawn by: DGW 12-03-2007

Checked by: G.Gold 12-04-07

Approval: J.F. 12-4-7

Title: PLASTIC
"D" CONNECTOR
(RECEPTACLE)
MALE CONTACTS

Division: CONNECTOR

Dwg. No.
CWR-182-XX-0000

MASTER

Mouser Electronics

Authorized Distributor

Click to View Pricing, Inventory, Delivery & Lifecycle Information:

[CW Industries:](#)

[CWR-182-09-0000](#)