

Specifications and Ordering Information

Specifications

- Contacts: phosphor bronze, standard; bare CDA 725 alloy optional
- Contact Plating: 10 μ in. gold over 50 μ in. nickel, standard; 30 μ in. gold over 50 μ in. nickel, optional; 50 μ in. gold over 50 μ in. nickel, optional; 100 μ in. tin-lead optional
- Insulator Material: UL 94V-0 flame-retardant glass-filled thermoplastic
- Strain Relief Strap Material: tin-plated steel
- Color: blue
- Operating Temperature: -55°C to +125°C
- Current Rating: 1 A (maximum) per contact
- Dielectric Withstand Voltage: Greater than 500 Vdc at sea level
- Insulation Resistance: Greater than 5 x 10⁹ ohms
- Mates with .050 in. centered round conductor flat cable and standard DIP socket with .100 in. x .300 in. or .100 in. x .600 in. contact spacing
- Cover pull-off force, with strain relief 20 lb minimum (force along contacts' primary axes)

How to Order DIP Connectors

CWR-XXX-XX-XXXX

Type of Connector
Standard tail length .175" = 130
Optional tail length .130" = 134

Number of Contacts
(14, 16, 24 or 40)

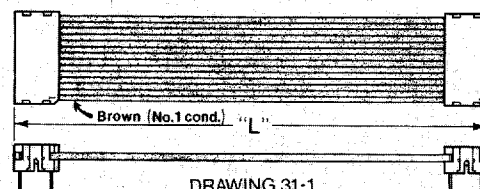
Plating
0000 = 10 μ in. gold over 50 μ in. nickel (standard)
0001 = 30 μ in. gold over 50 μ in. nickel
0002 = 50 μ in. gold over 50 μ in. nickel Mil-C-83503/6 approved. (CWR-130-14, 16, 24 only)
0003 = 100 μ in. tin-lead
0004 = Bare CDA 725 alloy

EXAMPLE: CWR-130-16-0002 is part number for a 16-pin DIP connector with .175 in. tails and 50 μ in. gold over 50 μ in. nickel contacts

How to Order DIP Cable Assemblies

Cable assemblies with two DIP connectors (CWR-130-XX-0000) on a prescribed length of color-coded cable are available with connectors oriented per drawing 31-1. (#1 contacts oriented to brown conductor.)

For other lengths, orientations, numbers or combinations of connectors, contact the factory or your local value-added distributor.



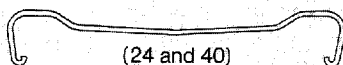
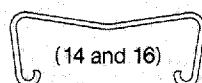
CA-XX-910X

Number of Conductors
(14, 16, 24 or 40)

Final assembly length "L"
1 = 3" \pm 1/8"
2 = 6" \pm 1/8"
3 = 12" \pm 1/4"
4 = 24" \pm 1/4"
5 = 48" \pm 1/4"

How to Order Strain Relief Straps for DIP Connectors

CWN-SR-XX



Connector Size
(14, 16, 24 or 40)

EXAMPLE: Strain Relief Strap part number for 24-pin DIP Connector is CWN-SR-24

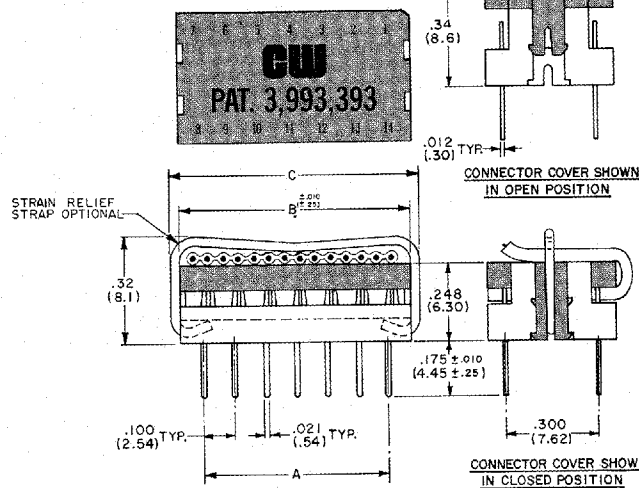
REVISIONS	Tolerances unless otherwise specified: 2 PLACE DEC. \pm .010 3 PLACE DEC. \pm .005 ANGLES \pm 1°		CW INDUSTRIES 130 James Way Southampton, PA 18966	
	L. Webber DRAWN BY			DIP CONNECTOR
	 CHECKED BY			
	 ENG. APPR.			
		PART NO.		

Engineering Dimensions

Dimensions

14/16 Pin DIP Connector

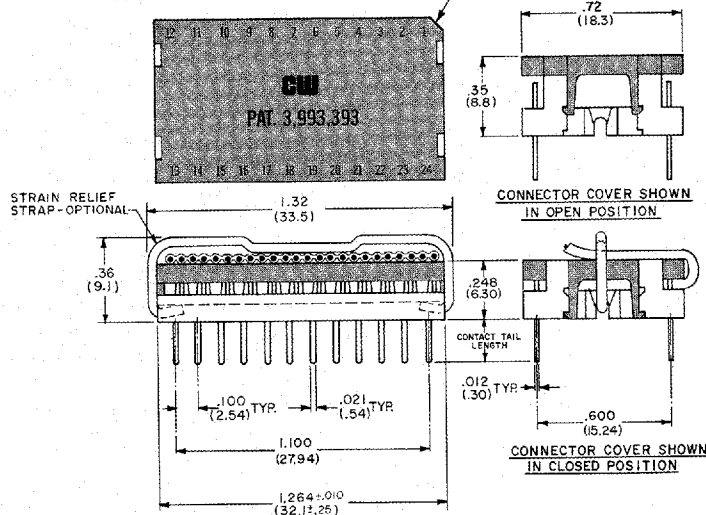
NOTCHED CORNER ORIENTS No. 1 CONTACT LOCATION.
(14 CONTACT POSITIONS SHOWN; ALSO AVAILABLE WITH 16 POSITIONS.)



CONNECTOR DIMENSIONS			
SIZE OF POSTS	A	B	C
14	.60 (15.2)	.754 (19.2)	.81 (20.6)
16	.70 (17.8)	.864 (21.7)	.91 (23.1)

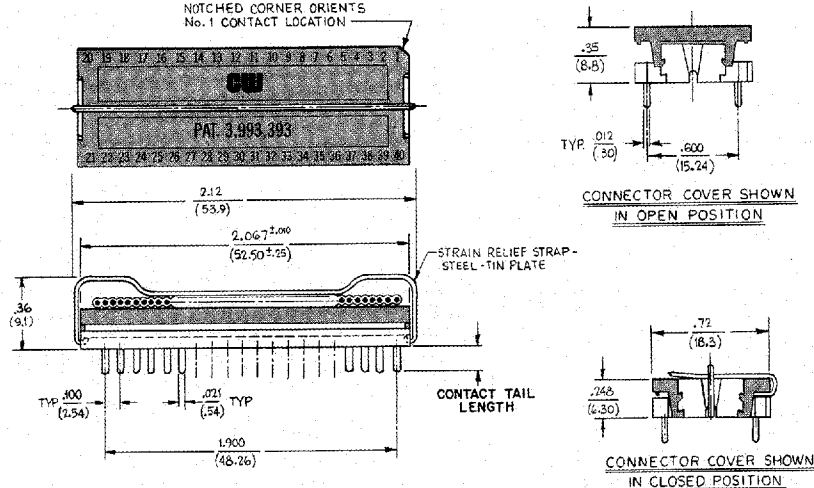
24 Pin DIP Connector

NOTCHED CORNER ORIENTS No. 1 CONTACT LOCATION.



40 Pin DIP Connector

NOTCHED CORNER ORIENTS No. 1 CONTACT LOCATION



Mouser Electronics

Authorized Distributor

Click to View Pricing, Inventory, Delivery & Lifecycle Information:

[CW Industries:](#)

[CWR-130-16-0002](#)