

THIS INFORMATION IS CONFIDENTIAL AND PROPRIETARY TO CW INDUSTRIES INCORPORATED AND ITS AFFILIATES. IT MAY NOT BE DISCLOSED TO ANYONE OTHER THAN CW INDUSTRIES PERSONNEL, WITHOUT WRITTEN AUTHORIZATION FROM CW INDUSTRIES INCORPORATED, SOUTHAMPTON, PENNSYLVANIA USA.

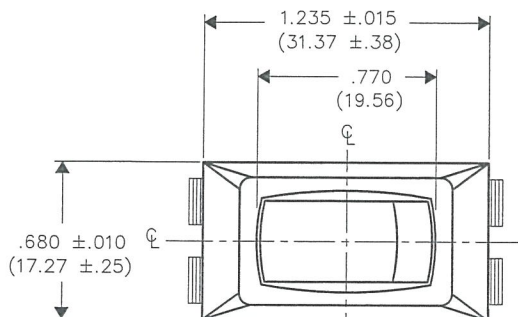
F  
D  
C  
B  
A

# PANEL PIERCING

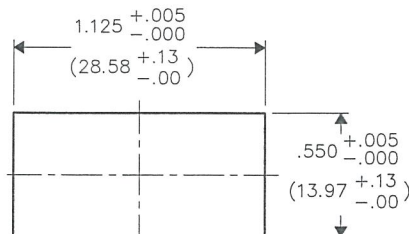
DIMENSIONS IN INCHES (MILLIMETERS)  
DO NOT SCALE DRAWING .....

Dwg. No.

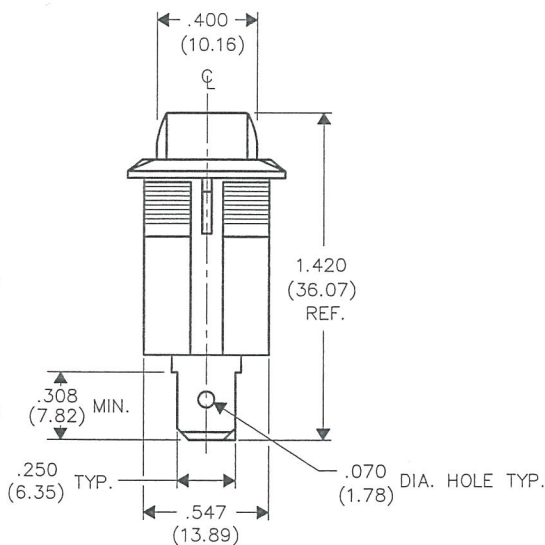
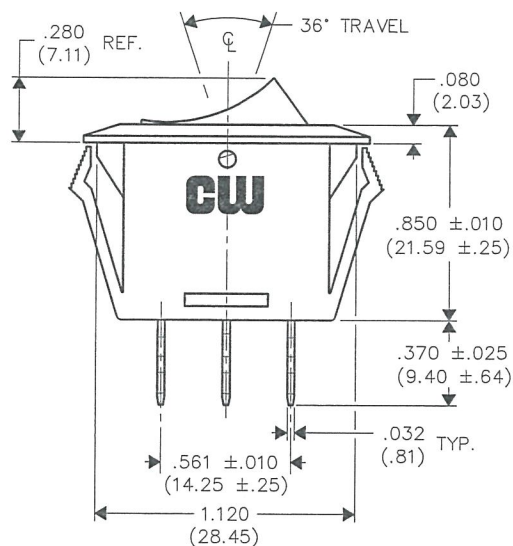
GRLH-2011-1600



CL of switch



CL of switch



BUTTON COLOR — Red Transparent  
HOUSING COLOR — Black

## SWITCH RATINGS:

UL/CSA/105°

16A. 125VAC 12A. 250VAC

3/4 H.P. 125-250 VAC

VDE

12(6)A. 250V ~ T55°

FORM-B3

## REVISIONS

RELEASED  
DGW 7-01-13

JUL 19 2013

PDF File Made

ID. No.

Made for: CW IND.  
Drawn by: DGW 7-01-13  
Checked by: G. Guld 7-8-13  
Approval: G. Guld 7-8-13

**CW INDUSTRIES**  
Southampton, Pa. 18966  
TOLERANCES UNLESS OTHERWISE SPECIFIED  
2 Place Decimal ±.010 METRIC  
3 Place Decimal ±.005 1 Place Dec. ±.25mm  
Angles ..... ±1' 2 Place Dec. ±.13mm

Title: **ROCKER SWITCH ASSEMBLY**  
(SNAP IN) S.P.-S.T.  
LAMP STYLE

Division: **SWITCH**

Dwg. No. **GRLH-2011-1600**

MASTER

# Mouser Electronics

Authorized Distributor

Click to View Pricing, Inventory, Delivery & Lifecycle Information:

[CW Industries:](#)

[GRLH-2011-1600](#)