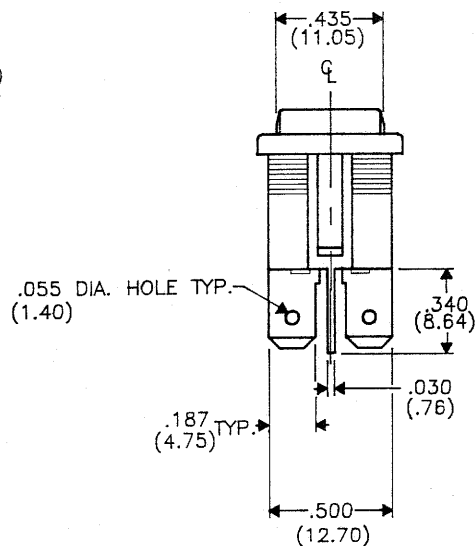
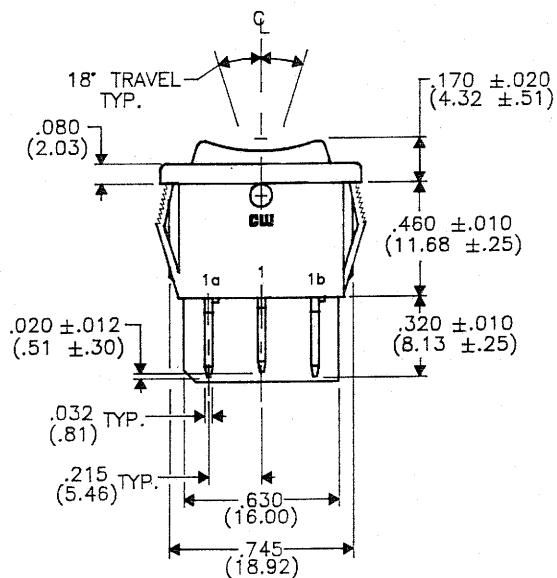
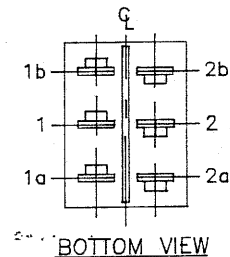
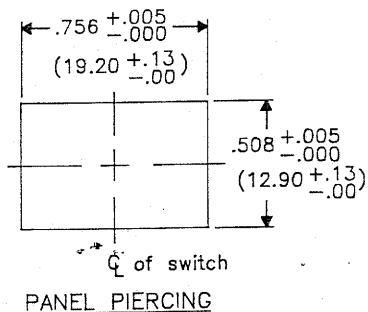
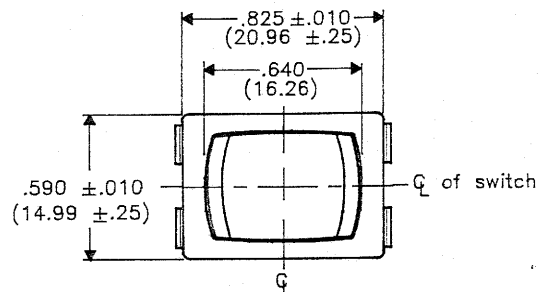


DIMENSIONS IN INCHES (MILLIMETERS)
DO NOT SCALE DRAWING...

Drawing No.
GRS-4023C-0005



B - FORM - 0
REVISIONS
RELEASED
DWG 5-25-94
MAY 26 1994

CENTENNIAL BLUEPRINT M07561

CW INDUSTRIES
Southampton, Pa. 18966

TOLERANCES UNLESS OTHERWISE SPECIFIED
2 Place decimal ±.010 METRIC
3 Place decimal ±.005 1 Place dec. ±.25 MM
Angles 1° 2 Place dec. ±.13 MM

Made for: CW IND.
Drawn by: DGW 5-25-94
Checked by: G. GOLD 5-26-94
Approval: RSK 5-26-93

Title
MINI SWITCH
ASSEMBLY
CENTER-OFF
(SNAP - IN)

Division
SWITCH

Drawing No.
GRS-4023C-0005

Mouser Electronics

Authorized Distributor

Click to View Pricing, Inventory, Delivery & Lifecycle Information:

[CW Industries:](#)

[GRS-4023C-0005](#)