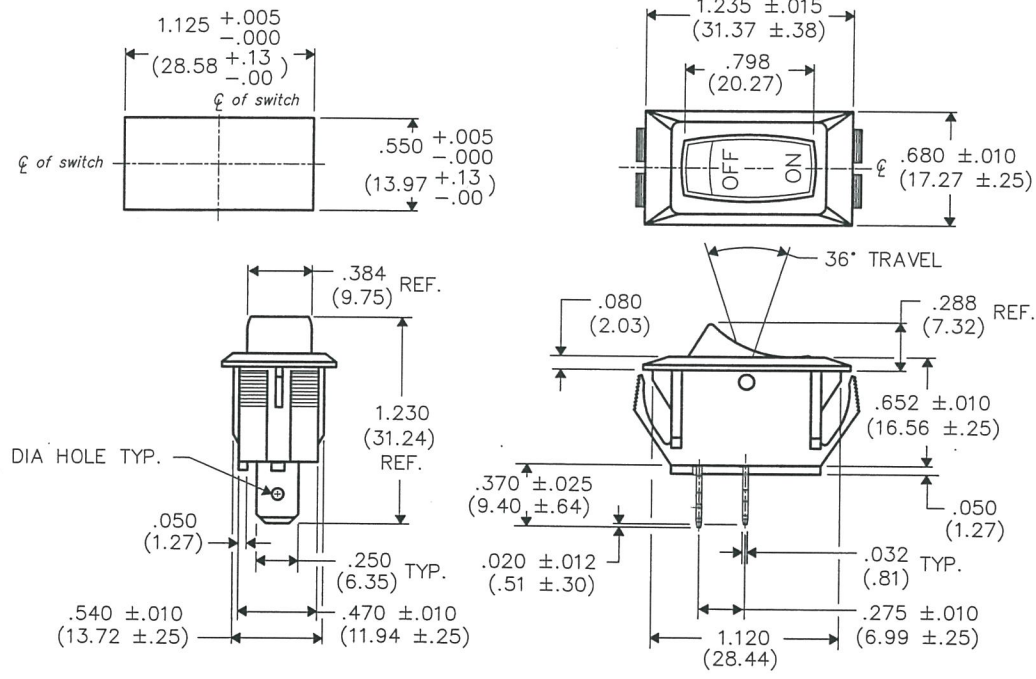


F
D
C
B
A
 THIS INFORMATION IS CONFIDENTIAL AND PROPRIETARY TO CW INDUSTRIES INCORPORATED AND ITS AFFILIATES. IT MAY NOT BE DISCLOSED TO ANYONE, OTHER THAN CW INDUSTRIES PERSONNEL, WITHOUT WRITTEN AUTHORIZATION FROM CW INDUSTRIES INCORPORATED, SOUTHAMPTON, PENNSYLVANIA USA.

DIMENSIONS IN INCHES (MILLIMETERS)
 DO NOT SCALE DRAWING

Dwg. No.
GRS-2011-2108

PANEL PIERCING



ACTUATOR COLOR – Black
 HOUSING COLOR – Black
 ACTUATOR PRINTING COLOR – White

ELECTRICAL RATINGS:

- 16A. 125V
- 12A. 250VAC
- 10A. 14V. (T)
- 3/4 H.P. 125–250 VAC
- 12(6)A. 250V ~ T85°

UL/CSA/VDE

B-FORMAT 2002 REVISIONS RELEASED: 9-26-13 DWG 9-26-13 SEP 9 0 2013									
CW INDUSTRIES Southampton, Pa. 18966 TOLERANCES UNLESS OTHERWISE SPECIFIED 2 Place Decimal ±.010 METRIC 3 Place Decimal ±.005 1 Place Dec. ±.25mm Angles ±1' 2 Place Dec. ±.13mm Made for: CW IND. Drawn by: DGW 9-26-13 Checked by: G. Guld 9-30-13 Approval: <i>[Signature]</i> 9/30/13								Title: ROCKER SWITCH S.P. – S.T. Division: SWITCH Dwg. No. GRS-2011-2108	

MASTER

Mouser Electronics

Authorized Distributor

Click to View Pricing, Inventory, Delivery & Lifecycle Information:

[CW Industries:](#)

[GRS-2011-2108](#)