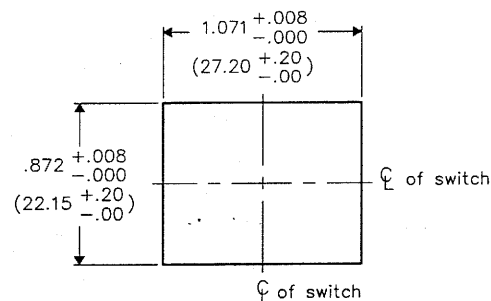


DIMENSIONS IN INCHES (MILLIMETERS)
DO NOT SCALE DRAWING

Dwg. No.

GR-2022-1600

PANEL PIERCING

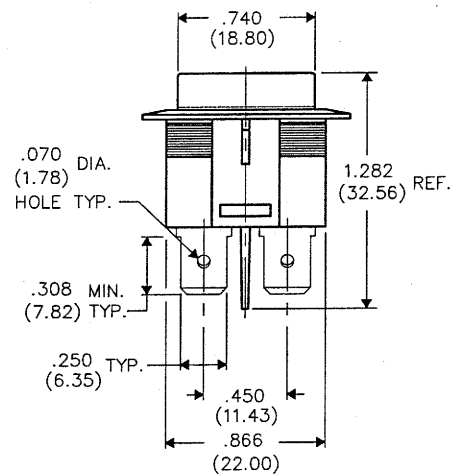
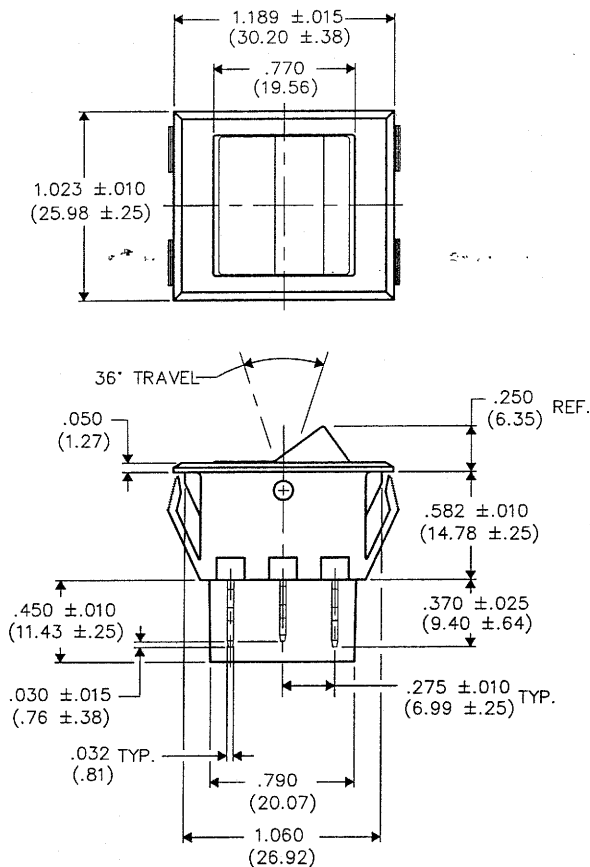
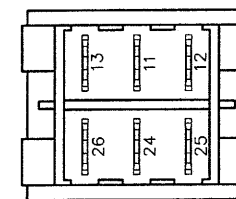


NOTES:

- 1.) With rocker in position shown, Circuits are completed between terminals 11 and 12 on pole 1, and terminal 24 and 25 on pole 2.

BOTTOM VIEW

SEE NOTE 1



FORM-B4	REVISIONS	0	1	2	3	4	5	6	7	8	9	10
RELEASED.	DGW	10-26-2006										
PDF FILE MADE	10-26-2006	10-26-2006										
CW INDUSTRIES Southampton, Pa. 18966 TOLERANCES UNLESS OTHERWISE SPECIFIED 2 Place Decimal $\pm .010$ METRIC 3 Place Decimal $\pm .005$ 1 Place Dec. $\pm .25$ mm Angles $\pm 1^\circ$ 2 Place Dec. $\pm .13$ mm			Title: POP-IN ROCKER SWITCH D.P.- D.T. Division: SWITCH Dwg. No. GR-2022-1600									
Made for: CW IND. Drawn by: DGW 10-26-2006 Checked by: GGuld 10-26-06 Approval: B. P. 10-30-06												

Mouser Electronics

Authorized Distributor

Click to View Pricing, Inventory, Delivery & Lifecycle Information:

[CW Industries:](#)

[GR-2022-1600](#)