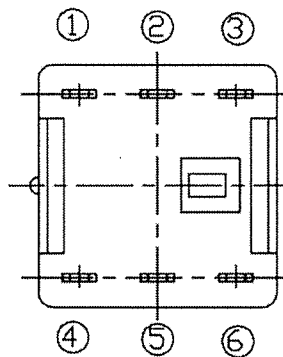
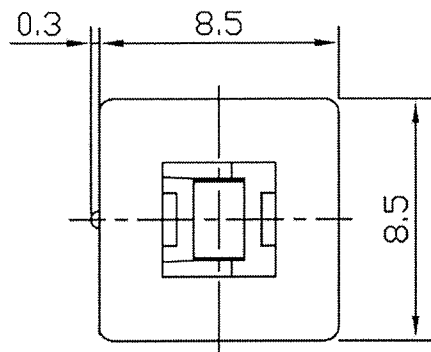
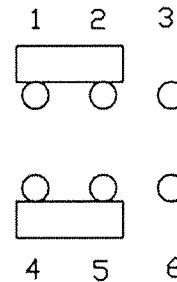


THIS INFORMATION IS CONFIDENTIAL AND PROPRIETARY TO CW INDUSTRIES INCORPORATED AND ITS AFFILIATES. IT MAY NOT BE DISCLOSED TO ANYONE, OTHER THAN CW INDUSTRIES PERSONNEL, WITHOUT WRITTEN AUTHORIZATION FROM CW INDUSTRIES INCORPORATED, SOUTHAMPTON, PENNSYLVANIA USA.

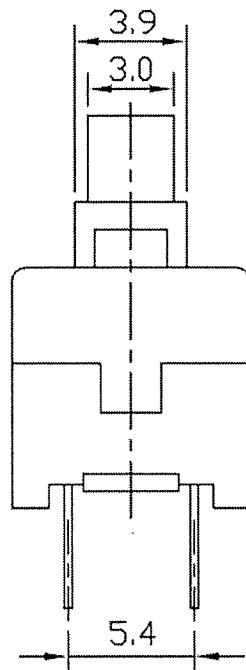
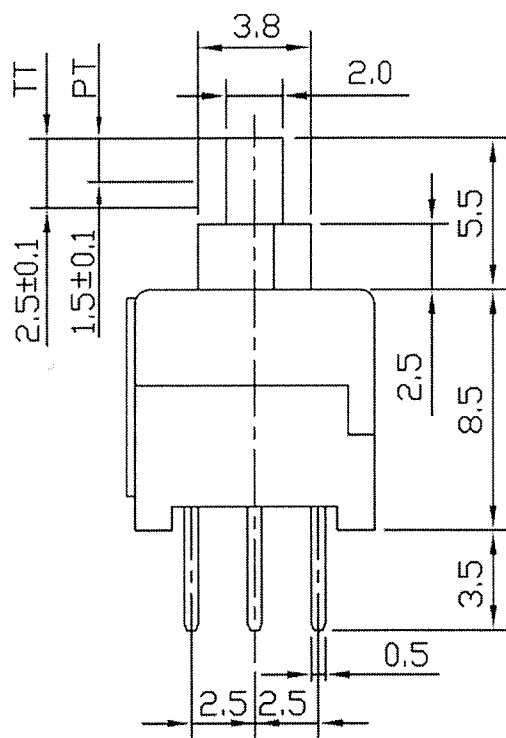
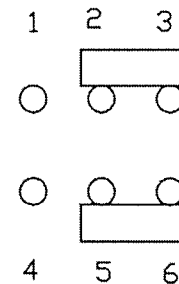


SCHEMATIC

FREE



PUSH



Rating	30VDC 0.3A / 16VDC 0.5A
Withstand Voltage	AC250V 1 minute
Insulation Resistance	$\geq 100M\Omega$ DC250V
Contact Resistance	$\leq 50m\Omega$
Soldering Temp.	$245\pm 5^{\circ}C$ 5 Sec.
Mechanical Life	100,000 cycles
Electrical Life	10,000 cycles
Operating Temp.	$-25^{\circ}C - + 65^{\circ}C$
Position Travel	$1.5 \pm 0.2$ mm
Ambient Humidity Range	$< 85\%RH$
Operating Force	$200\pm 80gf$

NOTE: TOLERANCES UNLESS OTHERWISE SPECIFIED:  $\pm 0.2(mm)$ .

RoHS Compliant

**CW INDUSTRIES**  
Southampton, Pa. 18966  
Tel 215.355.7080/www.cwind.com

Date Drawn: 3-21-12

Rev. 1

Unit: mm

Checked By: *G. Guld*

1 Added Button to title. Updated Operating Temp. & removed shipping temper. 11-12-12.

Title:  
**PUSH BUTTON SWITCH**

CW P/N:  
**GPBS850N**

# Mouser Electronics

Authorized Distributor

Click to View Pricing, Inventory, Delivery & Lifecycle Information:

[CW Industries:](#)

[GPBS-850N](#)