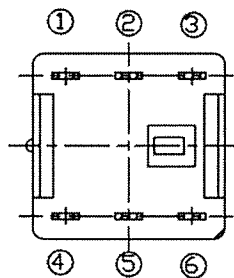
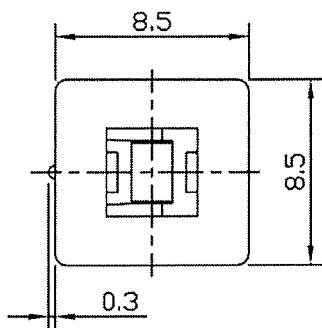
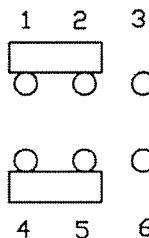


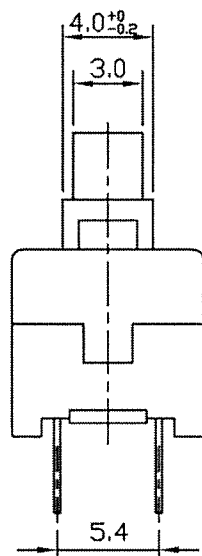
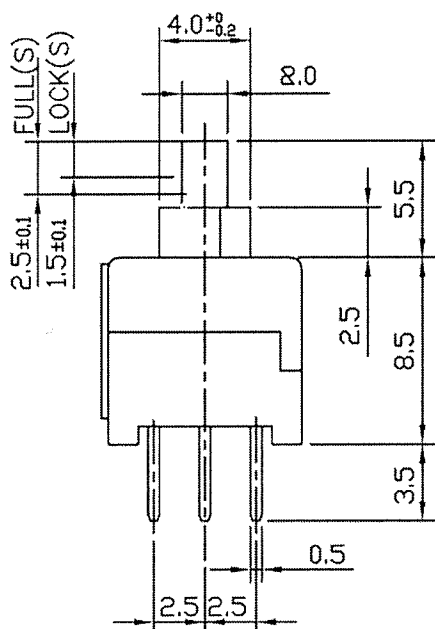
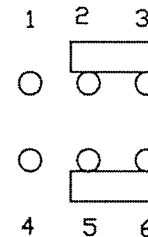
SCHEMATIC



FREE



PUSH



Rating	DC30V 0.3A,DC16V 0.5A
Withstand Voltage	AC250V 1 minute
Insulation Resistance	$\geq 100M\Omega$ DC250V
Contact Resistance	$\leq 50m\Omega$
Soldering Temp.	245 \pm 5 $^{\circ}$ C 5 Sec.
Mechanical Life	100000 cycles
Electrical Life	10000 cycles
Operating Temp.	-25 $^{\circ}$ C - +65 $^{\circ}$ C
Ambient Humidity Used	<85%RH
Operating force	200 \pm 80gf

NOTE: TOLERANCES UNLESS OTHERWISE SPECIFIED: $\pm 0.3mm$

RoHS Compliant

CW INDUSTRIES
Southampton, Pa. 18966
Tel 215.355.7080/www.cwind.com

Date Drawn: 3-21-12

Rev. 1

Unit: mm

Checked By: *G. Gold*

Title:

PUSH BUTTON SWITCH

CW P/N:

GPBS850L

1 Added Button to title & Soldering Temp. was Soldering Temper & added Operating Temp. to chart. 11-12-12.

Mouser Electronics

Authorized Distributor

Click to View Pricing, Inventory, Delivery & Lifecycle Information:

[CW Industries:](#)

[GPBS-850L](#)