


Rating	10A 125V, 6A 250V AC 1/2HP 125/250VAC	
Contact Resistance	50m ohm Max.	
Insulation Resistance	DC 500V 100M ohm Min.	
Dielectric Strength	AC 1500V 1 minute	
Operation Temperature	-25°C ~ 85°C	
Switch Function	2P SPST (ON)-OFF	

( ) = Momentary Function

**\*MATERIAL:**

Frame: Black, Nylon 66 (94-V2)

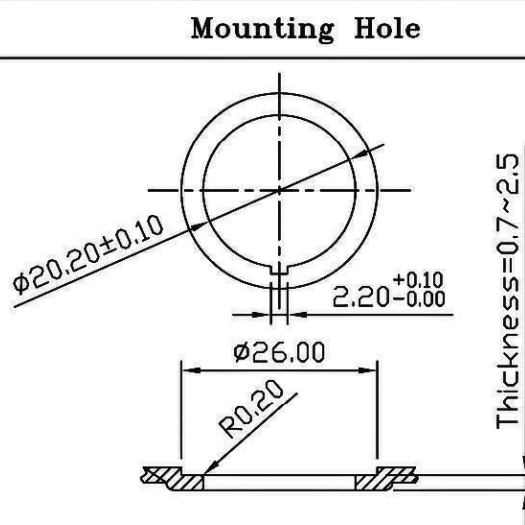
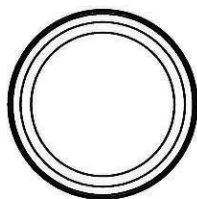
Actuator: Black, PC (94-V2)

Waterproof Rubber: Black, Silicone

Terminals: Silver plated, Copper alloy

Printed: None

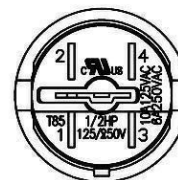
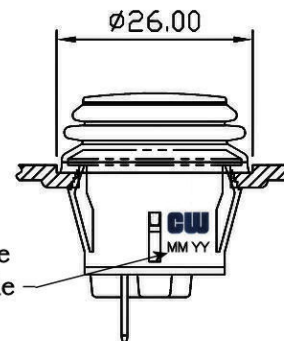
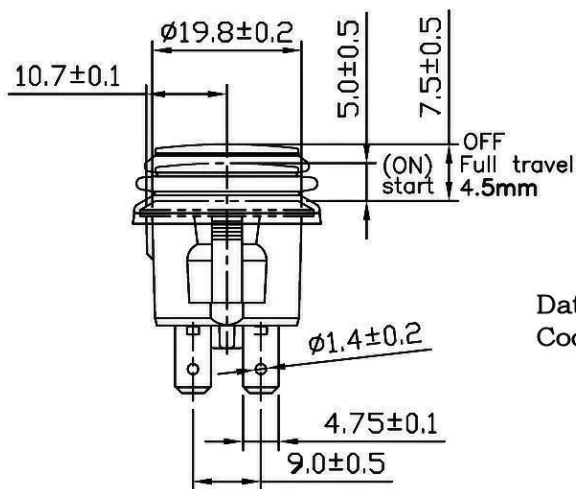
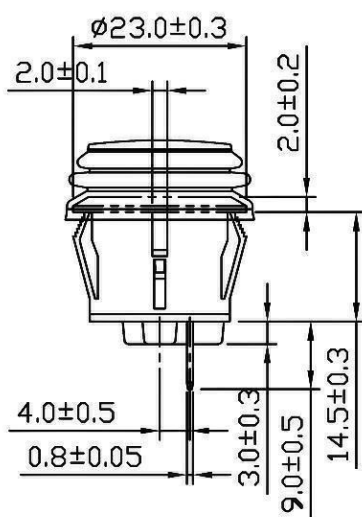
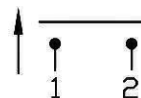
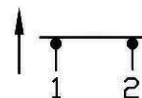
**Waterproof: IP65**



**Circuit Diagram**

(ON)

OFF



**RoHS Compliant**

1 Added date code. 1/18/11.

**CW INDUSTRIES**  
Southampton, Pa. 18966  
Tel 215.355.7080/www.cwind.com

Date Drawn: 1/18/11

Rev. 1

Unit: mm

Checked By:

G.Guld

Title:

PUSH BUTTON SWITCH

CW P/N:

GPB527C202BB

# Mouser Electronics

Authorized Distributor

Click to View Pricing, Inventory, Delivery & Lifecycle Information:

[CW Industries:](#)

[GPB527C202BB](#)