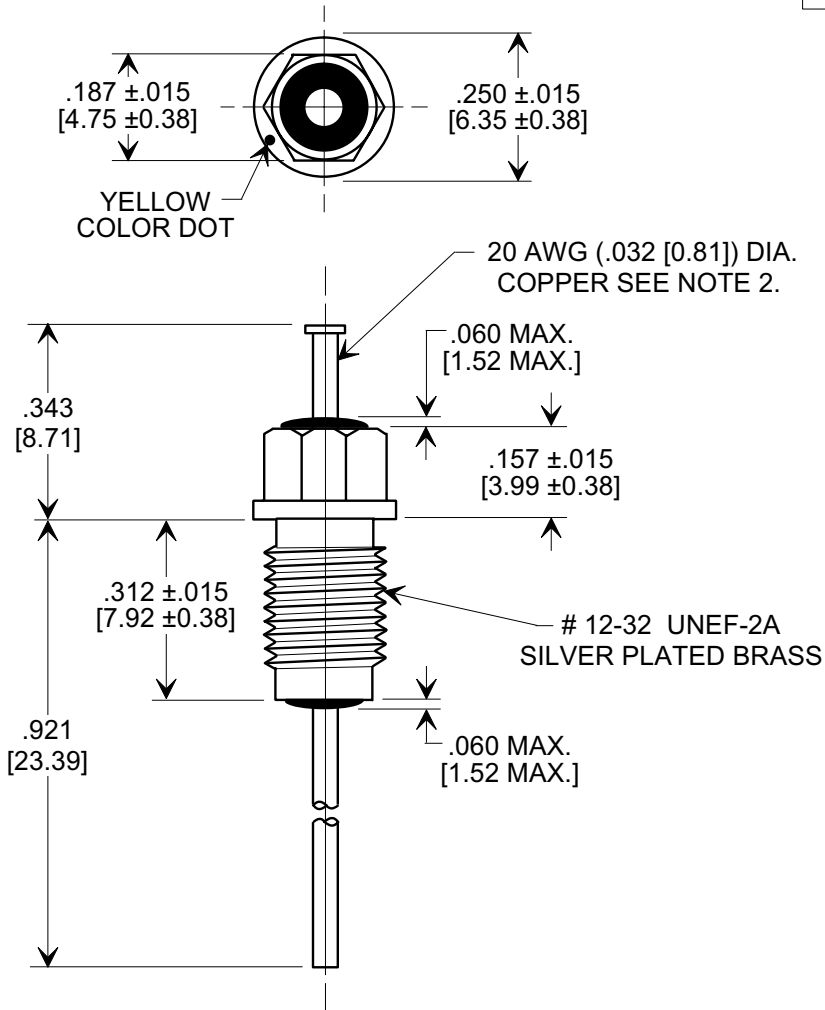
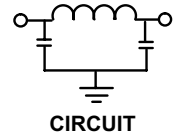
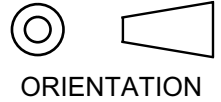


MARKETING SALES DRAWING

DIMENSIONS IN INCHES - DO NOT SCALE THIS DRAWING
DIMENSIONS IN METRIC - []

This drawing is the property of Tusonix, Inc., and may not be used, reproduced, published or disclosed to others without expressed authorization by Tusonix Inc.

Electrical Testing
per Tusonix standard
test plans and Mil-Std-202
Test Methods.



NOTES:

- TUSONIX STANDARD RESERVED PART NUMBER: 4405-002.
TUSONIX RoHS COMPLIANT RESERVED PART NUMBER: 4405-002 LF.
CUSTOMER MUST SPECIFY STANDARD OR RoHS PART NUMBER WHEN ORDERING.
- LEAD FINISH: STANDARD PART #: 60/40 SOLDER PLATED. RoHS PART #: MATTE TIN PLATED.
- PART MARKING: TRADEMARK, VARIATION NUMBER AND DATE CODE (YYDD) ON HEX FLATS.
STANDARD PART: BLACK INK. RoHS PART: GREEN INK.
- SUPPLIED WITH SILVER PLATED HEX NUT AND LOCK WASHER.
- SURGE TEST 100% 2300VDC, 50 MICROSECONDS.

MIN. Cx (pF)	WORKING VOLTAGE (WVDC) 125°C	CURRENT Idc	I.R. MIN. @ 100 (VDC.)	DWV (VDC)	MINIMUM NO LOAD INSERTION LOSS @ 25°C (dB) PER MIL-STD-220			
					10 MHz	100 MHz	1 GHz	10 GHz
100,000	100	10 A	10 G Ω	250	65	70	70	70

REVISION RECORD Original Release C.O. WAS SK 8188-864. S.M. 11-28-07 20071127-3-02 0	--TOLERANCES-- Unless Otherwise Specified		Title BUSHING STYLE EMI FILTER	
	DECIMAL ± .031 [0.79]		Drawn S.M. 09-24-07 Scale 3 X	
	ANGLES ± 5°		Approved T.C. 09-24-07	
	TUSONIX TUCSON, ARIZONA		A	4405-002

Mouser Electronics

Authorized Distributor

Click to View Pricing, Inventory, Delivery & Lifecycle Information:

CTS:

4405-002LF