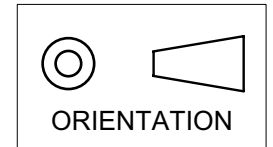
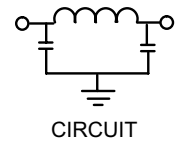
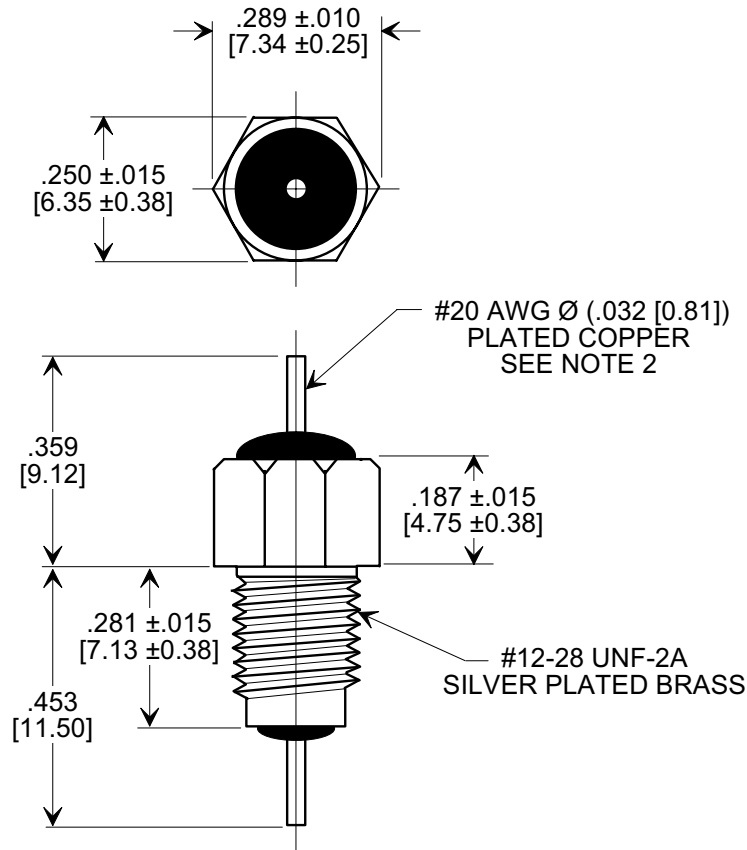


This drawing is the property of Tusonix, Inc., and may not be used, reproduced, published or disclosed to others without expressed authorization by Tusonix Inc.

MARKETING SALES DRAWING **DIMENSIONS IN INCHES - DO NOT SCALE THIS DRAWING** **DIMENSIONS IN METRIC - []**



Electrical Testing
per Tusonix standard
test plans and Mil-Std-202
Test Methods.



NOTES:

- TUSONIX STANDARD PART NUMBER: 4204-000.
TUSONIX RoHS COMPLIANT PART NUMBER: 4204-000 LF.
CUSTOMER MUST SPECIFY STANDARD OR RoHS PART NUMBER WHEN ORDERING.
- LEAD FINISH: STANDARD PART #: 60/40 SOLDER PLATED COPPER.
RoHS PART #: SILVER PLATED COPPER.
- PART MARKING: TRADEMARK AND VARIATION NUMBER ON HEX FLATS.
STANDARD PART: BLACK INK. RoHS PART: GREEN INK.
- SUPPLIED WITH SILVER PLATED COPPER ALLOY HEX NUT AND INTERNAL TOOTH LOCK WASHER.

MIN. CAP. (pF)	WORKING VOLTAGE (WVdc)		CURRENT IDC (A)	I.R. MIN. @ 100 (VDC)	DWV (VDC)	MINIMUM NO LOAD INSERTION LOSS (dB) AT 25°C PER MIL-STD -220			
1500	85°C	125 °C	10	10 G Ω	700	10 MHz	100 MHz	1 GHz	10 GHz
	350	200				5	45	70	70

X-2015 Rev-0	REVISION RECORD		TOLERANCES unless otherwise specified		Title	
	Original Release	0	2 PLC. DECIMAL ±		BUSHING STYLE EMI FILTER	
	RDN TO COMP FMT & ADDED METRIC: S.M. 04-11-00	1	3 PLC. DECIMAL ± .031[.079]			
	ADDED NOTES 1-3, IR & DWV. S.M. 02-02-06	2	ANGLES ±		Drawn S.M. 04-11-00	Scale 3 X
			TUSONIX TUCSON, ARIZONA		Approved B.M. 04-11-00	
					A	4204-000

Mouser Electronics

Authorized Distributor

Click to View Pricing, Inventory, Delivery & Lifecycle Information:

[Tusonix / CTS:](#)

[4204-000LF](#)