

### Features

- Extended pass band
- Low loss
- High rejection

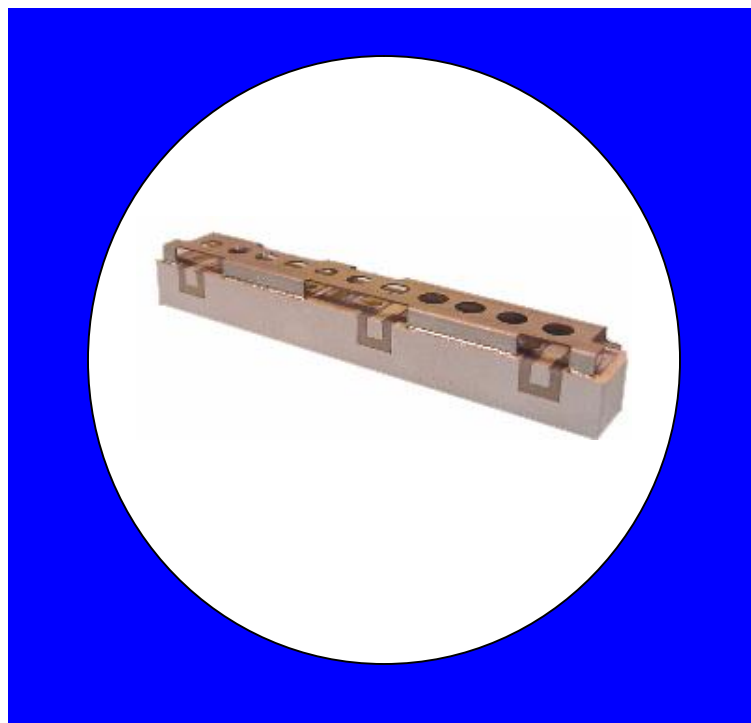
### Description

Surface mount, silver (Ag) coated ceramic duplexer. Developed for use in DCS Infrastructure applications.

Weight: Approximately 30.0 grams typical

Material: Filter is composed of a ceramic block plated with Ag and a shield made of nickel silver plated steel.

Filter complies with RoHS standards.



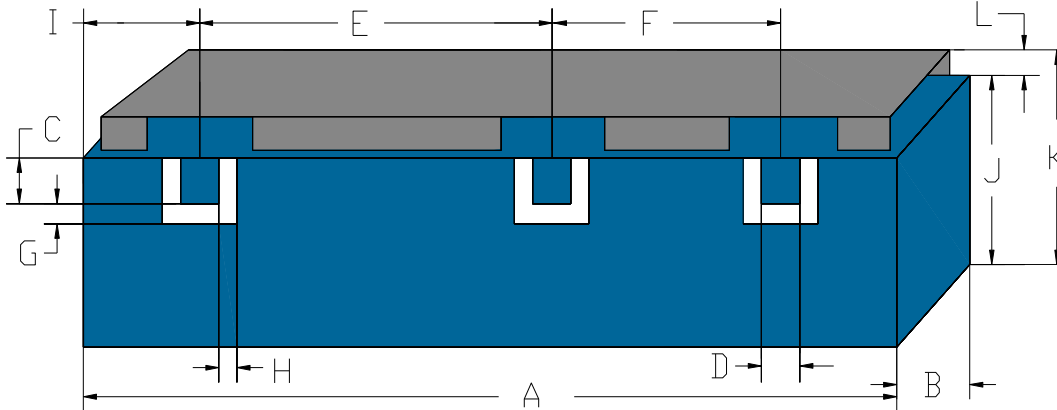
### Electrical Specifications (Preliminary)

Parameter	Frequency MHz	Typical @ 25°C	Specification @ 25°C	Spec over -40°C to +85°C
<b>Passband Iloss</b>	1710 - 1785	-2.10	-2.25	-2.40
Passband Ripple	1710 - 1785	1.2	1.30	1.40
Passband Return Loss @ Port 1	1710 - 1785	-13.5	-12.0	-12.0
Passband Return Loss @ Port 2	1710 - 1785	-13.5	-12.0	-12.0
Attenuation	1805 - 1880	-29.0	-28.0	-28.0
Low Band Response (S21)				
<b>Passband Iloss</b>	1805 - 1880	-2.0	-2.2	-2.3
Passband Ripple	1805 - 1880	1.2	1.3	1.4
Passband Return Loss @ Port 1	1805 - 1880	-13.5	-12.0	-12.0
Passband Return Loss @ Port 2	1805 - 1880	-13.5	-12.0	-12.0
Attenuation	1710 - 1785	-29.0	-28.0	-28.0
<b>Power Into any Port</b>				
				5 W Max

Note: Supplier shall test each filter to the critical electrical specifications of the above table. Any subsequent audits may deviate from in value due to measurement repeatability among different test systems. Such deviations shall not exceed the following limits:

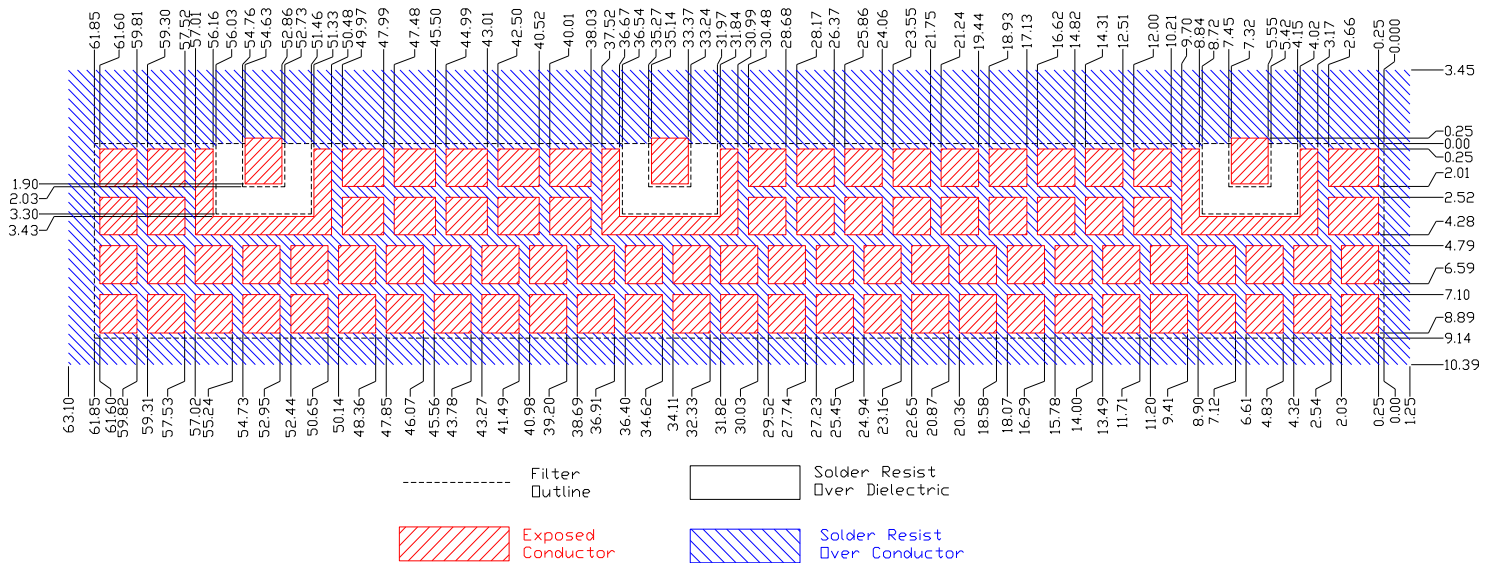
Specification Allowance	
Insertion Loss	0.1 dB
Return Loss	1.0 dB
Stopbands	1.0 dB

### Mechanical Drawing



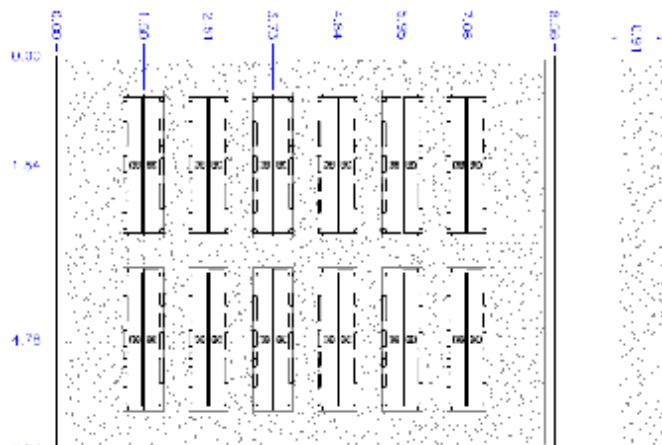
Dim	Nominal (mm)	Tolerance (mm) +/- or max
A	61.85	max
B	8.00	max
C	2.03	0.13
D	2.03	0.13
E	27.82	0.25
F	19.49	0.25
G	1.27	0.13
H	1.27	0.13
I	6.43	0.25
J	9.14	max
K	11.34	max
L	2.20	Max

### PCB Layout



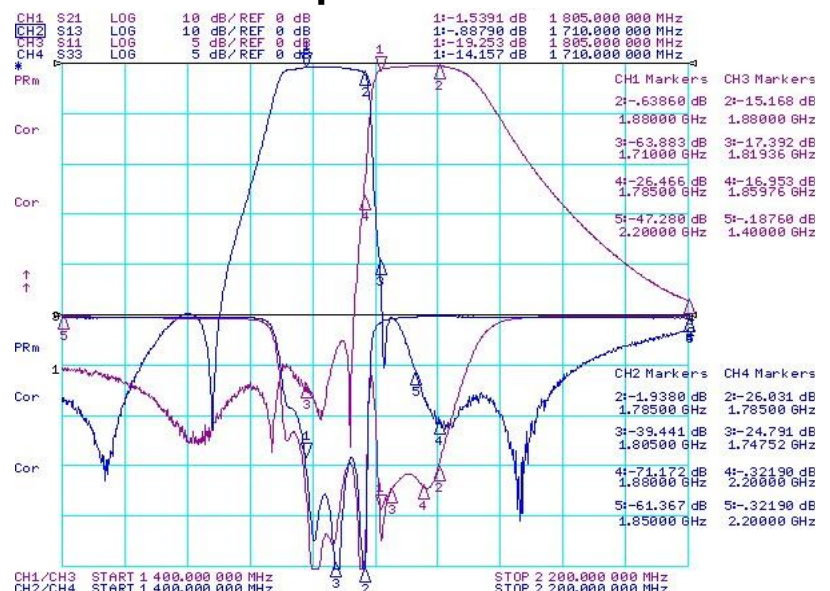
### Packaging and Marking

Product is shipped in preformed foam trays



5 Trays containing 12 slots with 2 filters per slot. 5 Trays per box. Total 120 filters per box  
Part Marking: CTS YWW CER0694A

### Electrical response



# Mouser Electronics

Authorized Distributor

Click to View Pricing, Inventory, Delivery & Lifecycle Information:

CTS:

CER0694A