

### Features

- Low Loss
- Excellent High Side rejection
- Excellent Return Loss

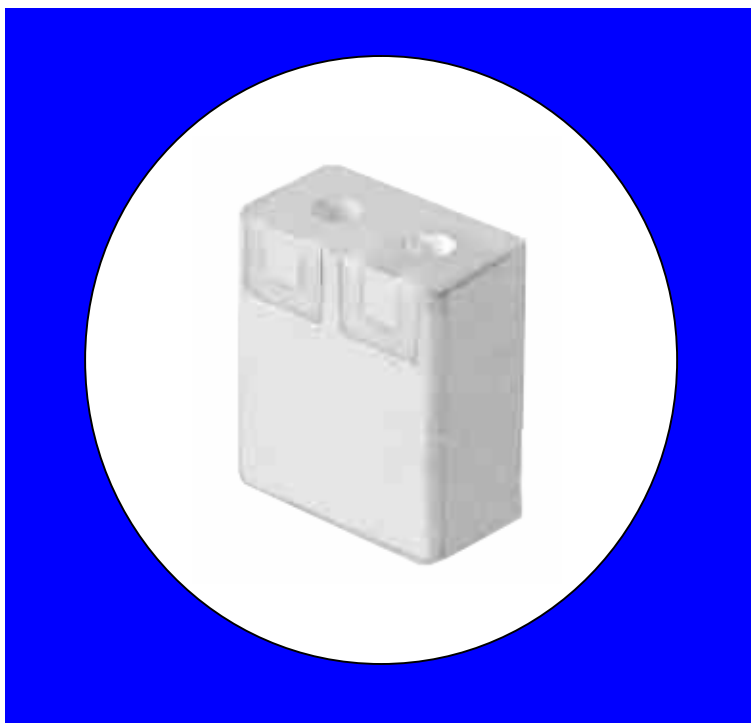
### Description

Surface mount, silver (Ag) coated ceramic filter.

Weight: 1.7 grams typical

Material: Filter is composed of a ceramic block plated with Ag.

Filter complies with RoHS standards.



### Electrical Specifications

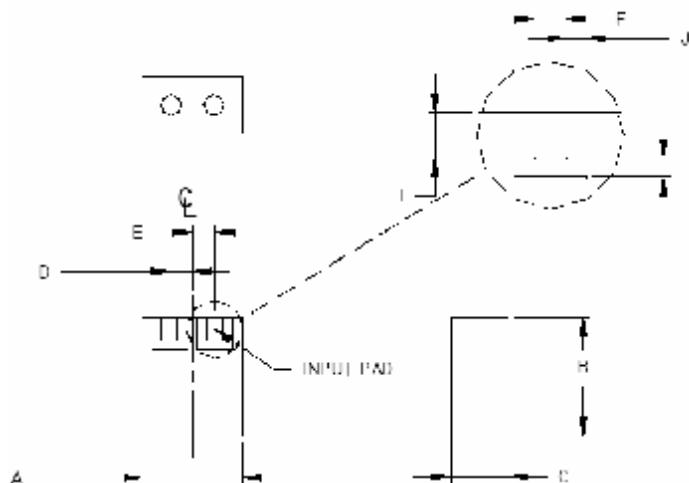
Parameter	Frequency (MHz)	Typical @ 25°C	Spec. @ 25°C	Spec @ -40°C to -85°C
Passband Insertion Loss	1565.4 – 1585.4	-0.99	-1.5	-1.8
Passband Ripple	1664.4 – 1585.4	0.25	0.5	0.8
Passband Return Loss	1565.4 – 1585.4	-19.6	-10	-10
Attenuation:	1500.4	-14.8	-12	-10
	1525.4	-9	-7	-5
	1625.4	-16	-15	-13
	1650.4	-36	-30	-28
Power into any port		1 Watt max		

Note: Supplier shall test each filter to the critical electrical specifications of the above table. Any subsequent audits may deviate from in value due to measurement repeatability among different test systems. Such deviations shall not exceed the following limits:

Specification Allowance	
Insertion Loss	0.1 dB
Return Loss	1.0 dB
Stopbands	1.0 dB

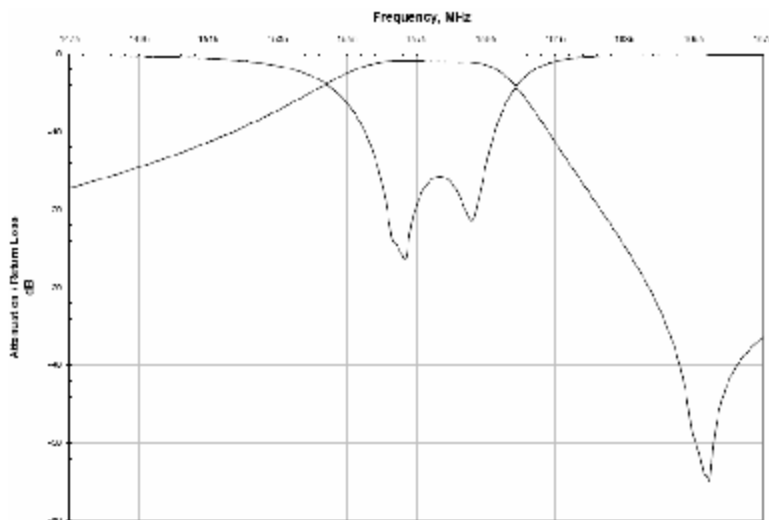
### Mechanical Drawing

Revision B – Origin Date: September 28, 2005 – Revision Date: July 26, 2011

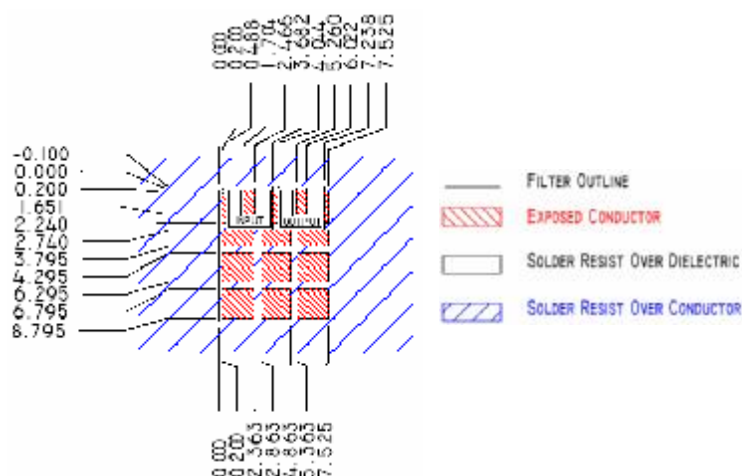


Dim	Nominal (mm)	Tolerance (mm) +/- or max
A	7.899	Max
B	9.271	Max
C	4.496	Max
D	1.778	0.127
E	1.778	0.127
F	1.27	0.127
G	0.762	0.127
I	1.778	0.127
J	0.762	0.127

### Electrical response

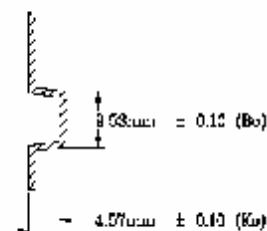
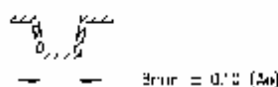
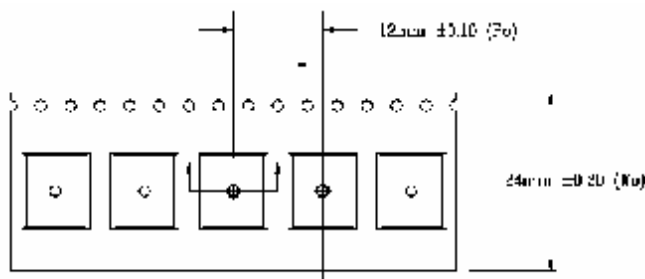
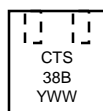
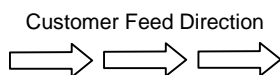


### PCB Layout



### Packaging and Marking

DIMENSION	UNITS	SPECIFICATION
REEL DIAMETER	mm	330
REEL WEIGHT	kg	1.7
REEL QUANTITY	ea.	1000 Max



# Mouser Electronics

Authorized Distributor

Click to View Pricing, Inventory, Delivery & Lifecycle Information:

CTS:

CER0138B