

Features

- Low Loss
- High Rejection
- Excellent Power Handling Capability

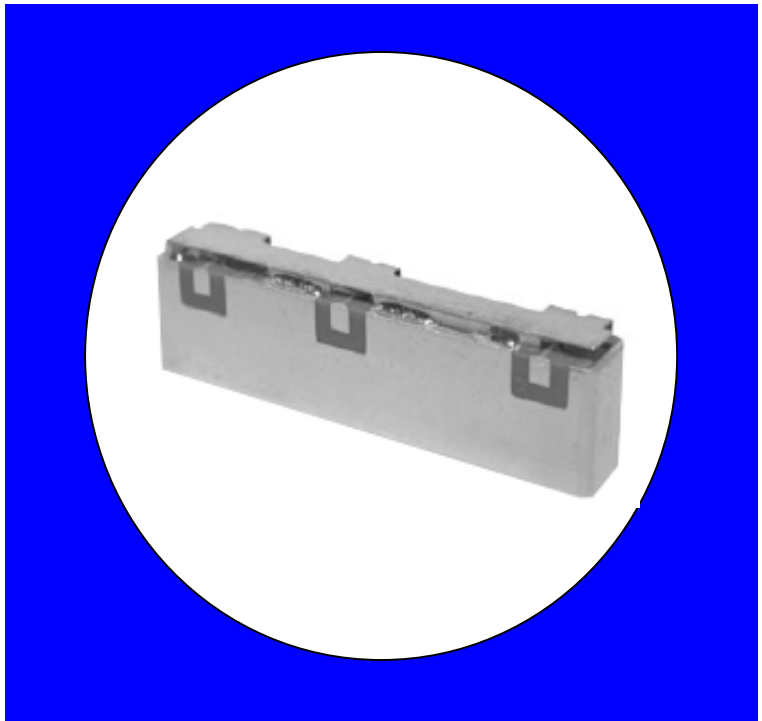
Description

Surface mount, silver (Ag) coated ceramic duplexer. Developed for use in 800 MHz infrastructure applications.

Weight: 6.2 grams typical

Material: Filter is composed of a ceramic block plated with Ag and a shield made of nickel silver plated steel.

Filter complies with RoHS standards.



Electrical Specifications

Parameter	Frequency (MHz)	Typical @ 25°C	Spec. @ 25°C
TX to Antenna Response			
Passband Insertion Loss	824-849	2.2 dB	2.5 dB max
Passband Return Loss @ TX	824-849	11.5 dB	10.0 dB min
Attenuation:	779-804	11.5 dB	10.0 dB min
Attenuation:	869-894	47.0 dB	45.0 dB min
Antenna to RX Response			
Passband Insertion Loss	869-894	3.0 dB	3.3 dB max
Passband Return Loss @ RX	869-894	10.0 dB	8.0 dB min
Attenuation	824-849	54.0 dB	52.0 dB min
Attenuation	914-939	24.0 dB	20.0 dB min
Attenuation	959-984	49.0 dB	45.0 dB min
Power Rating			3W
Impedance			50 Ω

Note: Supplier shall test each filter to the critical electrical specifications of the above table. Any subsequent audits may deviate from in value due to measurement repeatability among different test systems. Such deviations shall not exceed the following limits:

Specification Allowance

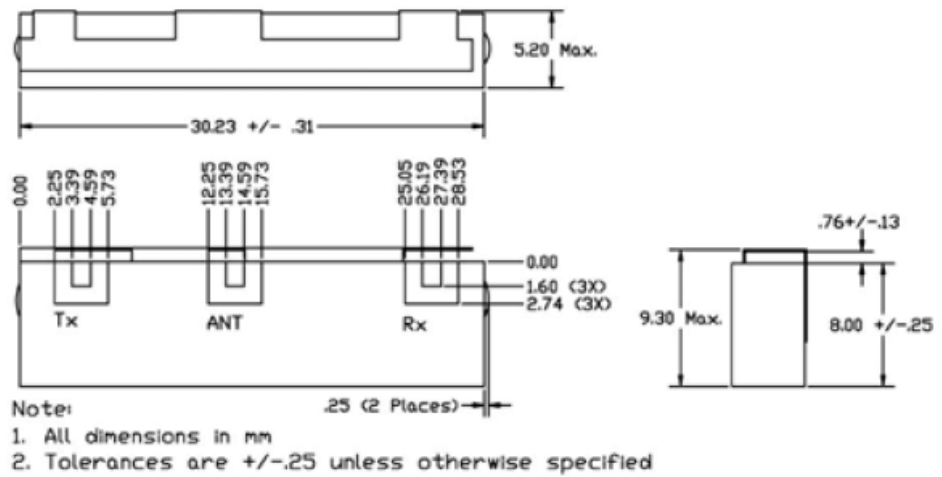
Insertion Loss	0.1 dB
Return Loss	1.0 dB
Stopbands	1.0 dB

*This product is covered by one or more of the following U.S. and foreign patents including: US 4,692,726;US 4,742,562; US 4,800,348;US 4,829,274;US 5,146,193;EP 0573597;DE 0573597;FR 0573597;JP 508149/92;KR 142171;US 5,162,760;US 5,218,329;US 5,250,916;US 5,327,109;US 5,488,335;CA 2114029;FR 9306297;GB 2273393;JP 3205337;KR 115113;CN 93106228.4;US 5,512,866;EP 0706719;DE 0706719;FR 0706719;GB 0706719;CN 95190359.4;US 5,602,518;US 5,721,520;US 5,745,018;EP 0910875;DE 0910875;DK 0910875;FR 0910875;GB 0910875;IE 0910875;JP 505182/98;KR 10-323013;US 5,994,978;US 6,462,629;CN 00810420.4;US 6,559,735;US 6,650,202;US 6,834,429. Other US and foreign patents pending.

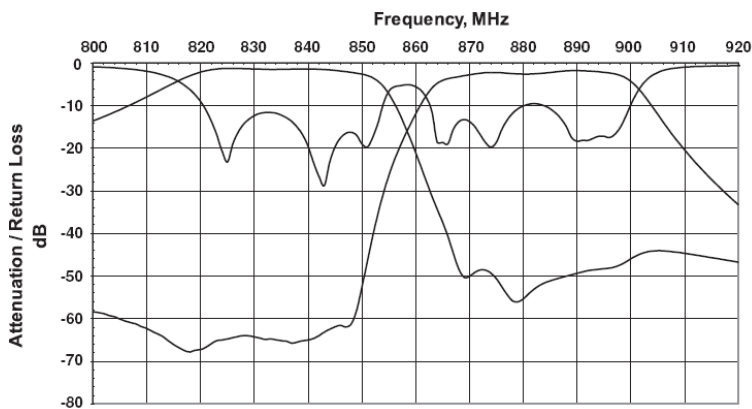
CTS Corporation 2006 reserves all copyrights in the layout, design and configuration of the patterns on this product.

Mechanical Drawing

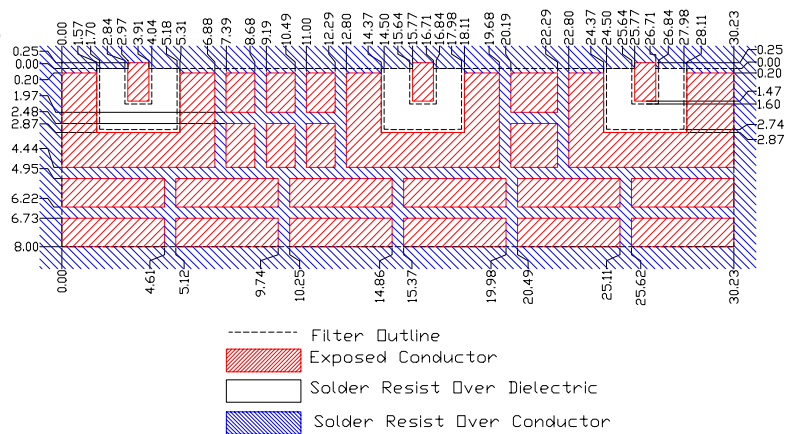
Rev 1 – Origin Date: July 11, 2005 – Revision Date: September 14, 2005



Electrical response

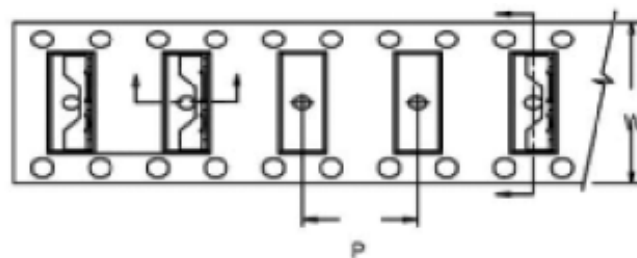
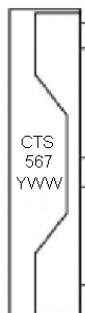
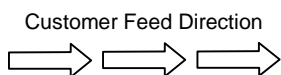


PCB Layout



Packaging and Marking

DIMENSION	UNITS	SPECIFICATION
REEL DIAMETER	mm	330
REEL WEIGHT	kg	2.1
REEL QUANTITY	ea.	250



Notes:

1. Dimension "W" is equal to 44 mm (width of tape).
2. Dimension "P" is equal to 20 mm (pitch of tape).

Mouser Electronics

Authorized Distributor

Click to View Pricing, Inventory, Delivery & Lifecycle Information:

[CTS:](#)

[KFF6567A](#)