



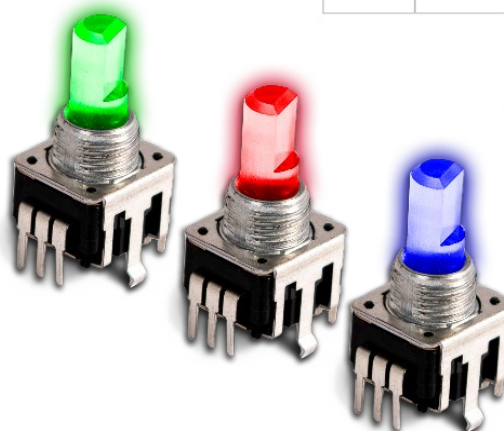
Series 12VR

12mm Panel Potentiometer w/Illuminated Shaft

- Compact 12mm package size
- Single, dual and tri-color LED backlit shaft
- Rotational life (30,000 cycles)
- Switch life (20,000 cycles)
- Variety of standard resistances & tapers

Applications

- Consumer portable electronics
- Commercial appliances
- Instrument amplifiers and guitar effects
- Keyboards and synthesizers
- Communications equipment



Ordering Information

Series	LED Option	Terminal Configuration	Shaft Length	Shaft Trim	LED Color	Detent Option	Resistance Code	Resistance Taper																																																			
12VR	3	H	20	B	T	N	103	B1																																																			
<table><tr><th>Code</th><th>Spec.</th></tr><tr><td>H</td><td>Vertical/Rear Mount Thread Bushing, PC Pins</td></tr><tr><td>S</td><td>Horizontal/Side Mount Thread Bushing, PC Pins</td></tr></table>		Code	Spec.	H	Vertical/Rear Mount Thread Bushing, PC Pins	S	Horizontal/Side Mount Thread Bushing, PC Pins	<table><tr><th>Code</th><th>Spec.</th></tr><tr><td>B</td><td>Knurled (18 teeth)</td></tr><tr><td>F</td><td>Flatted</td></tr></table>		Code	Spec.	B	Knurled (18 teeth)	F	Flatted	<table><tr><th>Code</th><th>Spec.</th></tr><tr><td>N</td><td>No Detent</td></tr></table>		Code	Spec.	N	No Detent	<table><tr><th>Code</th><th>Spec.*</th></tr><tr><td>A3</td><td>15% Log</td></tr><tr><td>B1</td><td>linear</td></tr><tr><td>C3</td><td>15% Antilog</td></tr></table>		Code	Spec.*	A3	15% Log	B1	linear	C3	15% Antilog																												
Code	Spec.																																																										
H	Vertical/Rear Mount Thread Bushing, PC Pins																																																										
S	Horizontal/Side Mount Thread Bushing, PC Pins																																																										
Code	Spec.																																																										
B	Knurled (18 teeth)																																																										
F	Flatted																																																										
Code	Spec.																																																										
N	No Detent																																																										
Code	Spec.*																																																										
A3	15% Log																																																										
B1	linear																																																										
C3	15% Antilog																																																										
<table><tr><th>Code</th><th>Spec.</th></tr><tr><td>1</td><td>1-Color (no switch)</td></tr><tr><td>2</td><td>2-Color (w/switch)</td></tr><tr><td>3</td><td>3-Color (w/switch)</td></tr></table>		Code	Spec.	1	1-Color (no switch)	2	2-Color (w/switch)	3	3-Color (w/switch)	<table><tr><th>Code</th><th>Spec.</th></tr><tr><td>15</td><td>15 mm</td></tr><tr><td>20</td><td>20 mm</td></tr></table>		Code	Spec.	15	15 mm	20	20 mm	<table><tr><th>Code</th><th>Spec.</th></tr><tr><td>1</td><td>Red</td></tr><tr><td>2</td><td>Blue</td></tr><tr><td>3</td><td>Orange</td></tr><tr><td>4</td><td>White</td></tr><tr><td>5</td><td>Green</td></tr><tr><td>A</td><td>Blue/Orange</td></tr><tr><td>B</td><td>Green/Red</td></tr><tr><td>C</td><td>Blue/Green</td></tr><tr><td>D</td><td>Green/Orange</td></tr><tr><td>E</td><td>Blue/Red</td></tr><tr><td>T</td><td>Red/Green/Blue</td></tr></table>		Code	Spec.	1	Red	2	Blue	3	Orange	4	White	5	Green	A	Blue/Orange	B	Green/Red	C	Blue/Green	D	Green/Orange	E	Blue/Red	T	Red/Green/Blue	<table><tr><th>Code</th><th>Spec.</th></tr><tr><td>502</td><td>5kΩ</td></tr><tr><td>103</td><td>10kΩ</td></tr><tr><td>203</td><td>20kΩ</td></tr><tr><td>503</td><td>50kΩ</td></tr><tr><td>104</td><td>100kΩ</td></tr><tr><td>254</td><td>250kΩ</td></tr></table>		Code	Spec.	502	5kΩ	103	10kΩ	203	20kΩ	503	50kΩ	104	100kΩ	254	250kΩ
Code	Spec.																																																										
1	1-Color (no switch)																																																										
2	2-Color (w/switch)																																																										
3	3-Color (w/switch)																																																										
Code	Spec.																																																										
15	15 mm																																																										
20	20 mm																																																										
Code	Spec.																																																										
1	Red																																																										
2	Blue																																																										
3	Orange																																																										
4	White																																																										
5	Green																																																										
A	Blue/Orange																																																										
B	Green/Red																																																										
C	Blue/Green																																																										
D	Green/Orange																																																										
E	Blue/Red																																																										
T	Red/Green/Blue																																																										
Code	Spec.																																																										
502	5kΩ																																																										
103	10kΩ																																																										
203	20kΩ																																																										
503	50kΩ																																																										
104	100kΩ																																																										
254	250kΩ																																																										

* Other JIS tapers are available. See charts.

2019-04-16 Rev. A

www.ctscorp.com

©2019 CTS® Corporation. Information/product(s) subject to change. No warranty that product(s) will meet the stated specifications for customer specific applications or test equipment. Visit www.ctscorp.com for list of applicable patent(s), more information, or to request a quote.

Page 1 of 7



Electrical Specifications

	Min	Typical	Max	Unit
Total Resistance Tolerance	-20	—	+20	%
Power Rating	—	+0.05	—	watt
Operating Voltage	—	—	+50	VAC
	—	—	+10	VDC
Residual Resistance	—	+30	—	Ω
Slider Noise	—	—	+100	mV
Switch Rating	@ 5 VDC	+10	—	mA
Switch Contact Resistance	—	—	+100	m Ω
LED Reverse Voltage	—	+5	—	VDC
Insulation Resistance	250 VDC for 1 min.	+100		M Ω
Dielectric Strength	300 VAC for 1 min. no arcing			
Taper	Linear and audio options (see charts)			

Mechanical

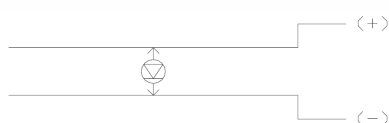
Total Mechanical Travel	300° \pm 5°
Operating Torque	
No switch	10 to 100 gf-cm
With switch	10 to 80 gf-cm
Shaft Wobble	0.7 x L/30mm p-p max.; L = Shaft Length
Shaft Push-Pull Strength	8 kgf for 10 sec.
Stop Strength	3 kgf-cm min.
Rotational Life	
No switch	15,000 cycles
With switch	30,000 cycles
Switch Life	20,000 cycles
Switch Type	SPST – Momentary Push
Switch Stroke	0.30 \pm 0.15 mm
Shaft Push Force	450 \pm 200 gf max.
Panel Nut Tightening Torque	10 kgf-cm
IP Rating	40
Mounting Hardware	One flat washer and one mounting hex nut supplied with bushing option
Packaging	Tray
Weight	4 grams

Environmental

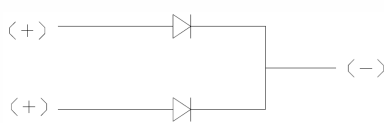
	Min	Typical	Max	Unit
Operating Temperature	-10	—	+70	°C
Storage Temperature	-30	—	+70	°C
Soldering Conditions				
Wave Solder	Preheat: 100°C max for 2 min max; Solder temperature: 260°C ± 5°C for 5 sec max.; No clean foam flux recommended			
Manual Solder	350°C ± 5°C for 3 sec max.; Sn95Ag5 no clean solder			
Wash	Not recommended			
Moisture Sensitivity Level	1			
ESD Classification (HBM)	Not applicable			

All testing is performed at room ambient conditions except as noted. Users should verify device actual performance in their specific applications
This product is compliant to RoHS3 Directive 2015/863 Amendments of Annex II on 31 March 2015, and REACH SVHC Directive EC 1907/2006 Amendments of Annex XIV & Annex XVII on 15 January 2018.
Custom and value-added options available on request. Please contact your sales representative for additional information.

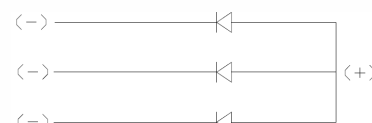
LED Specifications



1 color



2 color

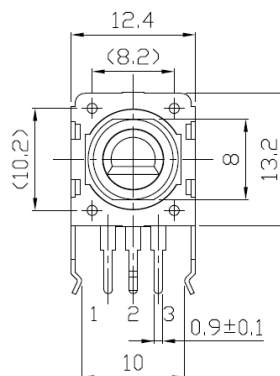
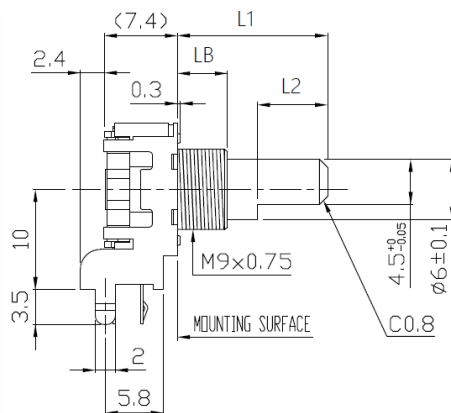


3 color

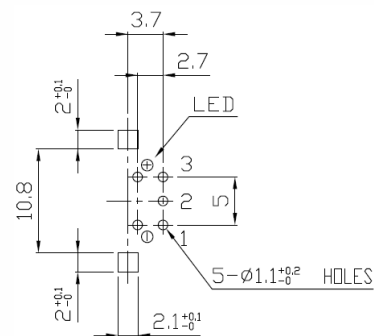
Emitted Color		Power Dissipation (mW)	DC Forward Current (mA)	Test Condition IF = 20 mA		
				Forward Voltage (V)		
				Minimum	Typical	Maximum
Red		60	30	—	1.8	2.6
Blue		72	20	—	3.2	3.6
Orange		100	30	—	2.1	2.6
White		72	20	—	3.2	3.6
Green		72	20	—	3.2	3.6
Blue/Orange	Blue	75	20	2.7	3.3	3.7
	Orange	60	25	1.7	2.0	2.4
Green/Red	Green	95	25	2.7	3.3	3.7
	Red	60	25	1.7	2.0	2.4
Blue/Green	Blue	75	20	2.7	3.3	3.7
	Green	95	25	2.7	3.3	3.7
Green/Orange	Green	95	25	2.7	3.3	3.7
	Orange	60	25	1.7	2.0	2.4
Blue/Red	Blue	75	20	2.7	—	3.7
	Red	60	25	1.7	—	2.4
Red/Green/Blue	Red	60	25	1.7	2.0	2.4
	Green	110	25	2.7	3.3	3.7
	Blue	110	25	2.7	3.3	3.7

Mechanical Specifications

Series 12VR Horizontal/Side Mount with 1-Color LED

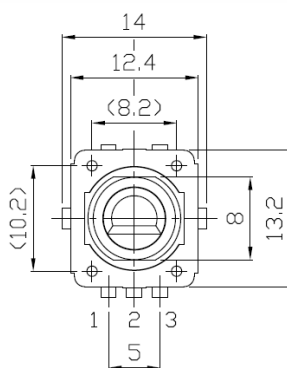
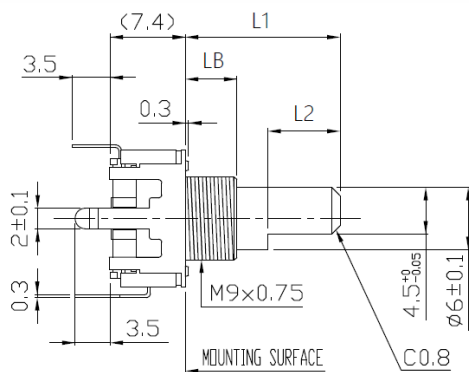


SHAFT SHOWN IN CENTER POSITION
OR CENTER CLICK POSITION

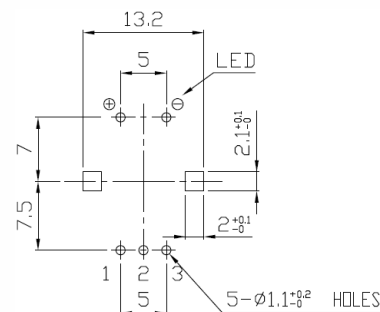


P.C.B. MOUNTING DETAIL
(TOLERANCE±0.1)
*VIEWED FROM MOUNTING SIDE
(P.C.B) t=1.4mm

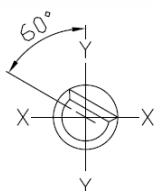
Series 12VR Vertical/Rear Mount with 1-Color LED



SHAFT SHOWN IN CENTER POSITION
OR CENTER CLICK POSITION



P.C.B. MOUNTING DETAIL
(TOLERANCE±0.1)
*VIEWED FROM MOUNTING SIDE
(P.C.B) t=1.6mm

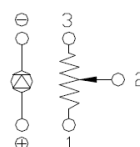


SHAFT SHOWN IN FULL CCW POSITION



TERMINAL DETAIL

CIRCUIT DIAGRAM

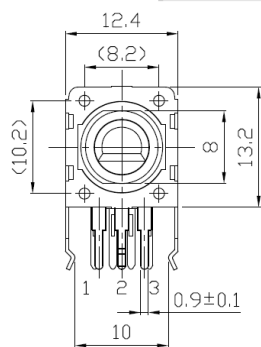
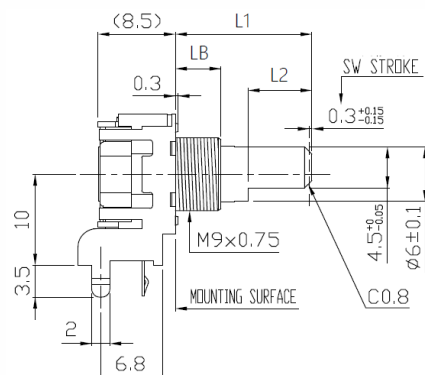


TOLERANCES UNLESS OTHERWISE SPEC	
$L \leq 10$	±0.3
$10 < L \leq 100$	±0.5
$100 < L$	±0.8
ANGULAR DIMENSION	±5°

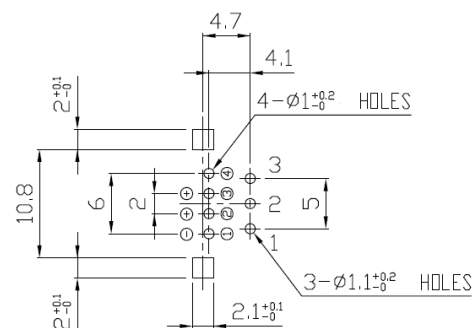
Unit: mm

Mechanical Specifications

Series 12VR Horizontal/Side Mount with 2-Color LED

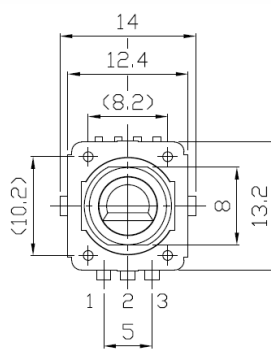
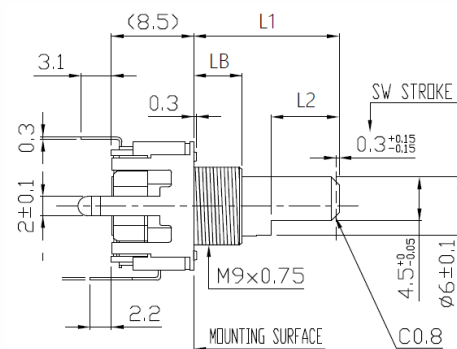


SHAFT SHOWN IN CENTER POSITION
OR CENTER CLICK POSITION

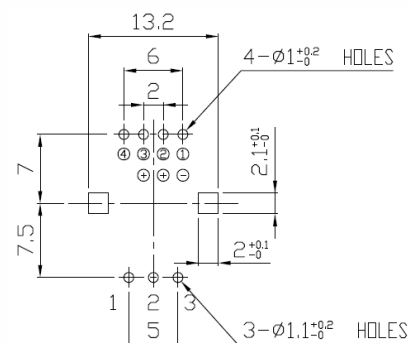


P.C.B. MOUNTING DETAIL
(TOLERANCE±0.1)
*VIEWED FROM MOUNTING SIDE
(P.C.B) t=1.4mm

Series 12VR Vertical/Rear Mount with 2-Color LED

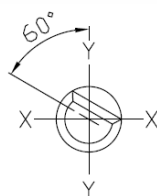


SHAFT SHOWN IN CENTER POSITION
OR CENTER CLICK POSITION

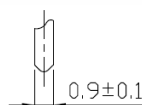


P.C.B. MOUNTING DETAIL
(TOLERANCE±0.1)
*VIEWED FROM MOUNTING SIDE
(P.C.B) t=1.4mm

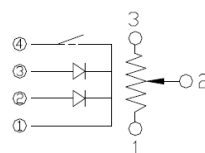
FAT1



SHAFT SHOWN IN FULL CCW POSITION



TERMINAL DETAIL



CIRCUIT DIAGRAM

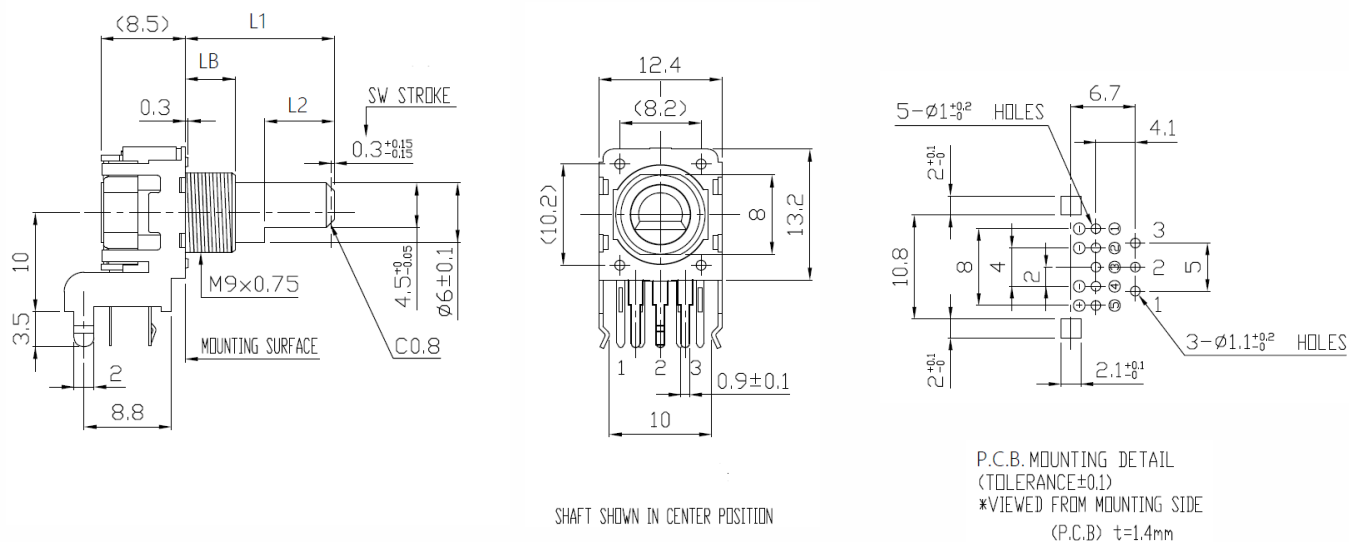
TOLERANCES UNLESS OTHERWISE SPEC	
$L \leq 10$	±0.3
$10 < L \leq 100$	±0.5
$100 < L$	±0.8
ANGULAR DIMENSION	±5°

Unit: mm

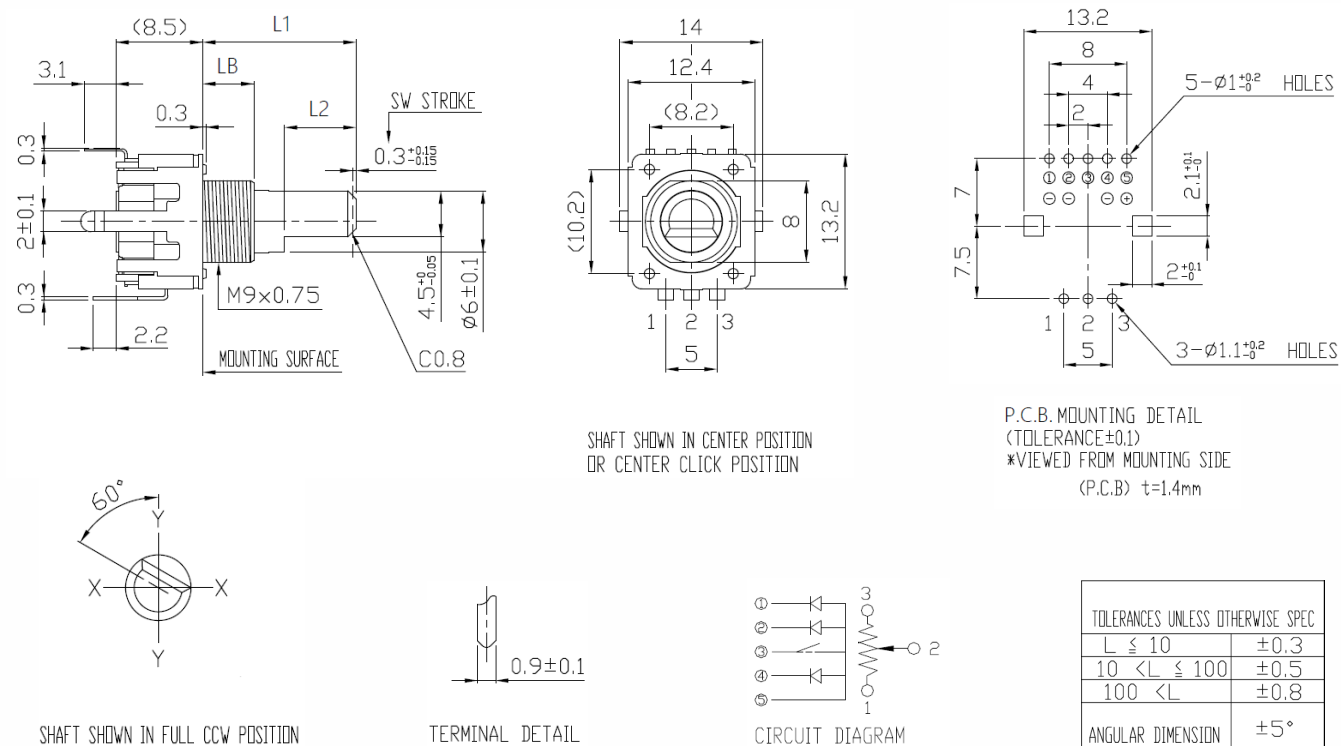
2019-04-16 Rev. A

Mechanical Specifications

Series 12VR Horizontal/Side Mount with 3-Color LED



Series 12VR Vertical/Rear Mount with 3-Color LED

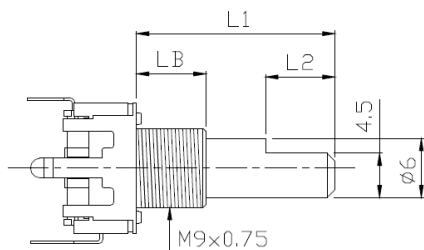


TOLERANCES UNLESS OTHERWISE SPEC	
L ≤ 10	±0.3
10 < L ≤ 100	±0.5
100 < L	±0.8
ANGULAR DIMENSION	±5°

Unit: mm

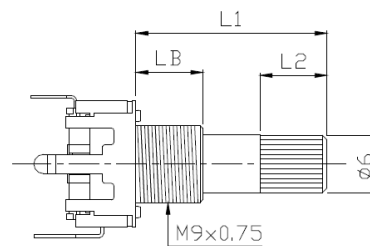
Mechanical Specifications

Series 12VR Shaft Trim Options



Flatted Shaft

LENGTH		
L1	L2	LB
15	7	5
20	7	7

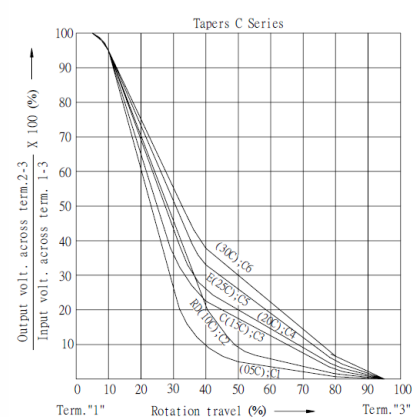
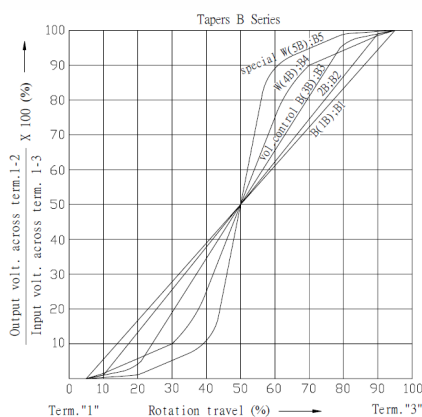
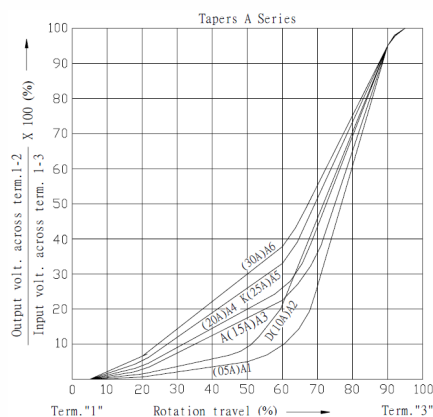


18 Tooth Knurled Shaft

LENGTH		
L1	L2	LB
15	7	5
20	7	7

Electrical Specification

Series 12VR Taper Graphs



Mouser Electronics

Authorized Distributor

Click to View Pricing, Inventory, Delivery & Lifecycle Information:

CTS:

[12VR2S20FCN103B1](#) [12VR1S20F4N103B1](#) [12VR1S20F5N103B1](#) [12VR2S20FBN103B1](#) [12VR1S20F2N103B1](#)