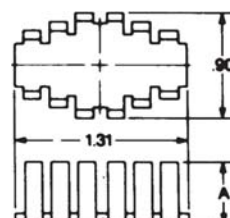


HEAT SINKS FOR METAL AND PLASTIC CASE, CASE-MOUNTED SEMICONDUCTORS



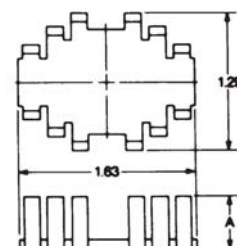
LA-A Series

Semiconductor Case Type	*Ø °C/W	Part Number		"A" Dim.
		Commercial Black	Military Black	
TO126/127/220	17.0	LAE66A3CB	—	0.75
TO126/127/220	14.7	LAE66A4CB	—	1.00



LA-B Series

Semiconductor Case Type	*Ø °C/W	Part Number		"A" Dim.
		Commercial Black	Military Black	
TO-3	14.1	LAIC3B2CB	LAIC3B2B	0.50
TO-3	12.0	LAIC3B3CB	LAIC3B3B	0.75
TO-3	14.1	LATO3B2CB	LATO3B2B	0.50
TO-3	12.0	LATO3B3CB	LATO3B3B	0.75

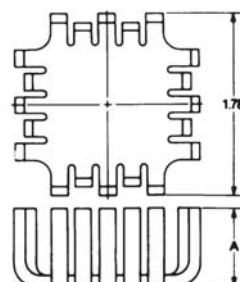


*Natural convection, case-ambient mounted on G10 board



UP and UP1 Series

Semiconductor Case Type	*Ø °C/W	Part Number		"A" Dim.
		Commercial Black	Military Black	
TO-3	7.1	UP-TO3-CB	UP-TO3-B	1.00
TO-3	10.4	UP1-348-CB		0.50

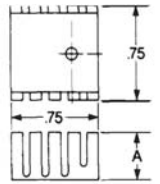


BOARD-MOUNTED HEAT SINKS



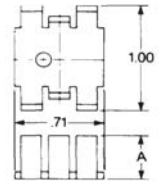
PC Series

Semiconductor Case Type	*Ø °C/W	Part Number	“A” Dim.
		Commercial Black	
TO-126/127/220	27.3	PC1-1CB	.38



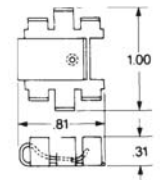
PA Series

Semiconductor Case Type	*Ø °C/W	Part Number		"A" Dim.
		Unplated	Commercial Black	
TO-126/127/220	28.8	PA1-1U	PA1-1CB	.50



PSC2 Series

Semiconductor Case Type	*Ø °C/W	Part Number	
		Unplated	Commercial Black
TO-220 (Anti-Rotation Tabs)	36.7	PSC2T2U	PSC2T2CB



VERTICALLY MOUNTED HEAT SINKS WITH BOARD-MOUNTED TABS

Vertical Tab Mounted Heat Sinks

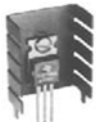
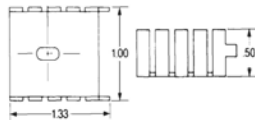


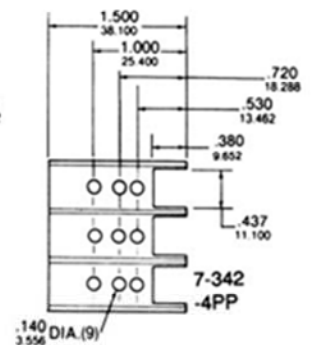
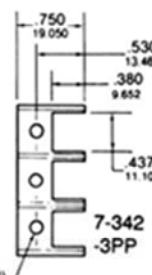
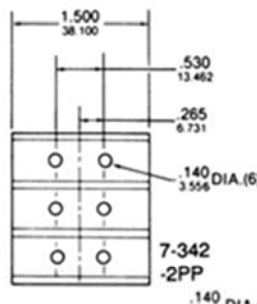
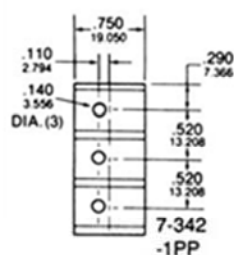
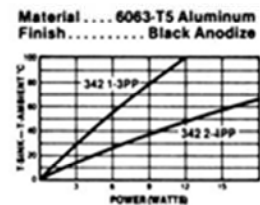
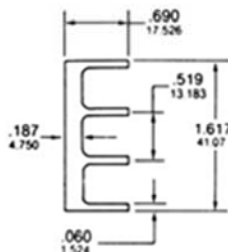
Fig. 1

Semiconductor Case Type	*Ø °C/W	Part Number	
		Commercial Black	
TO-126/127/220	20.0	PB1-36CB	



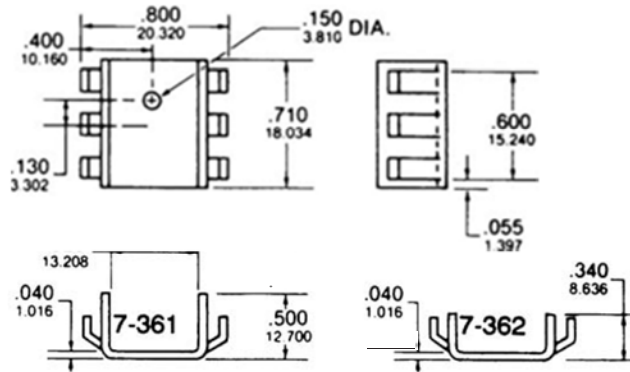
*Natural convection, case-ambient mounted on G10 board

7-342-1, -2, -3, -4

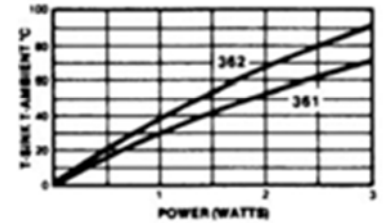


BOARD AND VERTICALLY MOUNTED HEAT SINKS

7-361 & 7-362



Material... 1100-H14 Aluminum
Finish..... Black Anodize



Mouser Electronics

Authorized Distributor

Click to View Pricing, Inventory, Delivery & Lifecycle Information:

[CTS:](#)

[PB136CB](#)