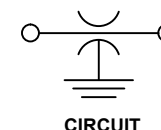
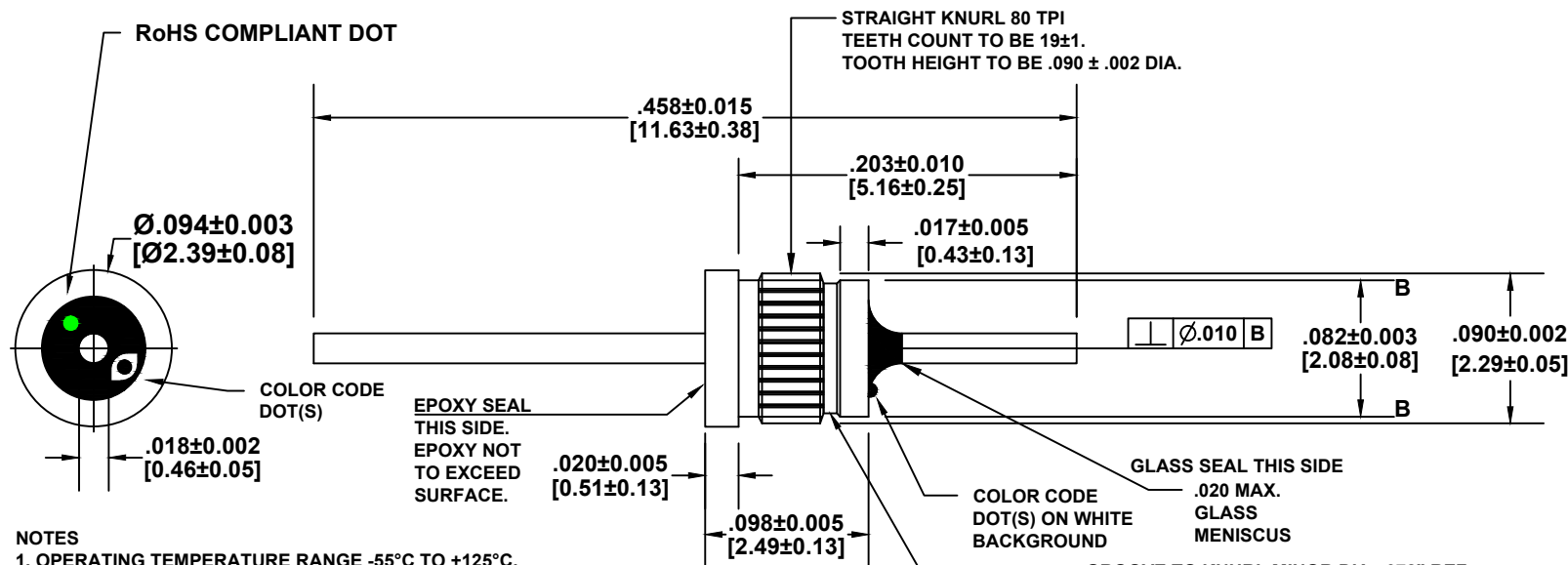



This drawing is the property of Tusonix, Inc., and may not be used, reproduced, published or disclosed to others without expressed authorization by Tusonix Inc.

DATA SHEET DRAWING

Electrical testing per Tusonix standard test plans and MIL-Std-202 test methods.



B	Cx (pF)	TOL.	DC WORKING VOLTAGE		I DC	I.R. MIN @ 100 VDC	DWV	DIMENSIONS: ENGLISH UNITS - INCHES METRIC UNITS - [mm]	TUSONIX A Subsidiary of CTS, Electronic Components TUCSON, ARIZONA	Title			
	10,000	+100% -0%	85°C 150	125°C 100	1A	10 G Ω	250 VDC			MINIATURE PRESS-IN EMI FILTER			
	TYPICAL NO LOAD INSERTION LOSS (dB) @ 25°C PER MIL-STD-220								--TOLERANCES-- Unless Otherwise Specified	Dwn	R.C. 12-02-15	Ckd	R.C. 12-02-15
	1 MHz	10 MHz	100 MHz	1 GHz	10 GHz	ORIENTATION 	Material	SEE NOTES		Scale: NOT TO SCALE			
	4	21	35	50	60		Sheet 1 of 1						
A	REVISION RECORD								2 Place Decimal ± .01	A	4310-020		
	REV	DATE	CHG BY	CHANGE	REV	DATE	CHG BY	CHANGE	3 Place Decimal ± .005				
	A	12-02-15	R.C.	ORIGINAL RELEASE					Angles ± 5 °				
	B	10-10-16	R.C.	MODIFIED COLOR CODE DOT PLACEMENT, NOTE 5 HOLE DIM., ADDED EPOXY FILL NOTE									

Mouser Electronics

Authorized Distributor

Click to View Pricing, Inventory, Delivery & Lifecycle Information:

[Tusonix / CTS:](#)

[4310-020LF](#)