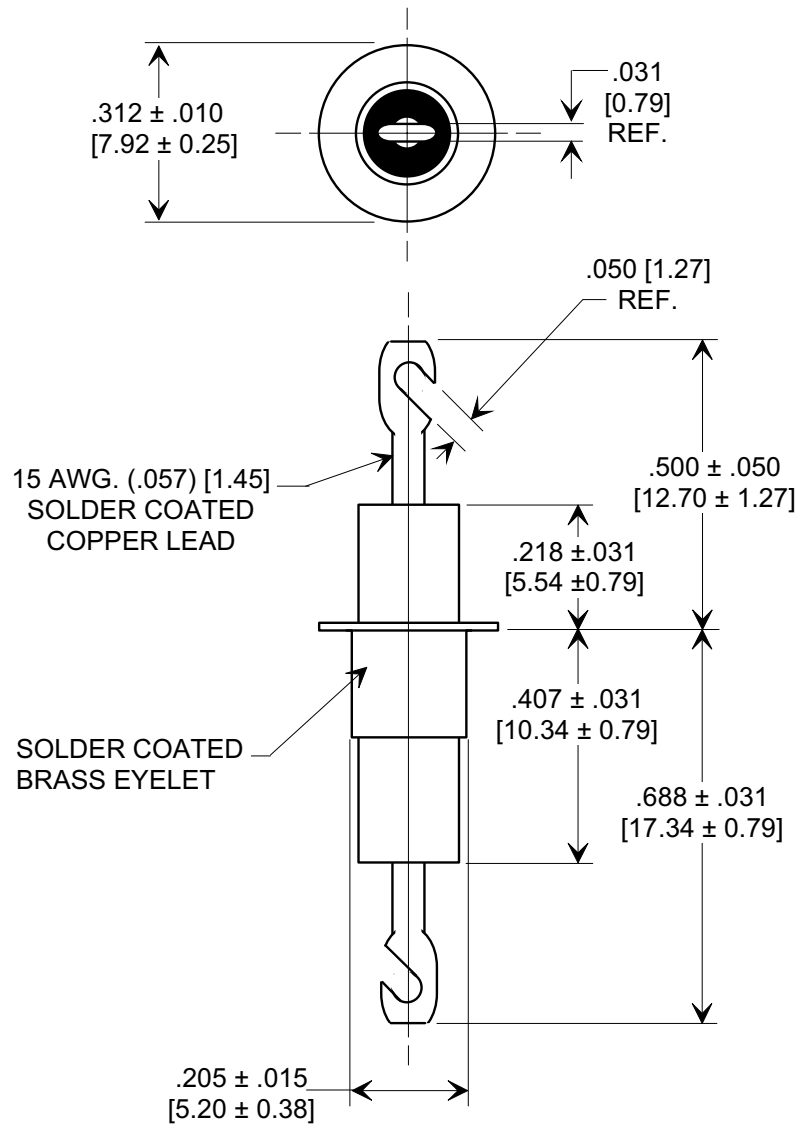
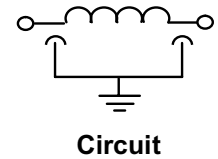
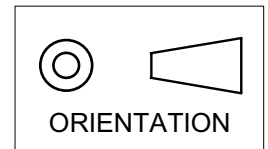


**MARKETING SALES DRAWING**  
**DIMENSIONS IN INCHES - DO NOT SCALE THIS DRAWING**  
**DIMENSIONS IN METRIC - [   ]**

Electrical Testing  
per Tusonix standard  
test plans and Mil-Std-202  
Test Methods.



MIN. CAP (pF)	WORKING VOLTAGE (WVDC)		CURRENT Idc	I.R. MIN. @ 100 (VDC)	DWV	MINIMUM NO-LOAD INSERTION LOSS			
	85°C	125°C				10 MHz	100 MHz	1 GHz	10 GHz
4500	1000	500	25A	10 G Ω	1500 VDC	8	50	70	70

X-2015 Rev-0 REVISION RECORD	0	DIM'S REV'D .500 ± .050 WAS ± .031 & [5.20] WAS [5.21], TOL'S ± .031 DELETED L.E. 02-19-04	1	20040219-3-01	--TOLERANCES-- Unless Otherwise Specified	Title <b>EYELET STYLE EMI FILTER</b>	
	Original Release C.O. 20031201-5-01				DECIMAL ±	Drawn S.M. 12-01-03	
					ANGLES ±	Scale 3 X	
					<b>TUSONIX</b> TUCSON, ARIZONA	Approved T.C. 12-01-03	
					<b>A</b>	<b>4106-001</b>	

# Mouser Electronics

Authorized Distributor

Click to View Pricing, Inventory, Delivery & Lifecycle Information:

[Tusonix / CTS:](#)

[4106-001LF](#)