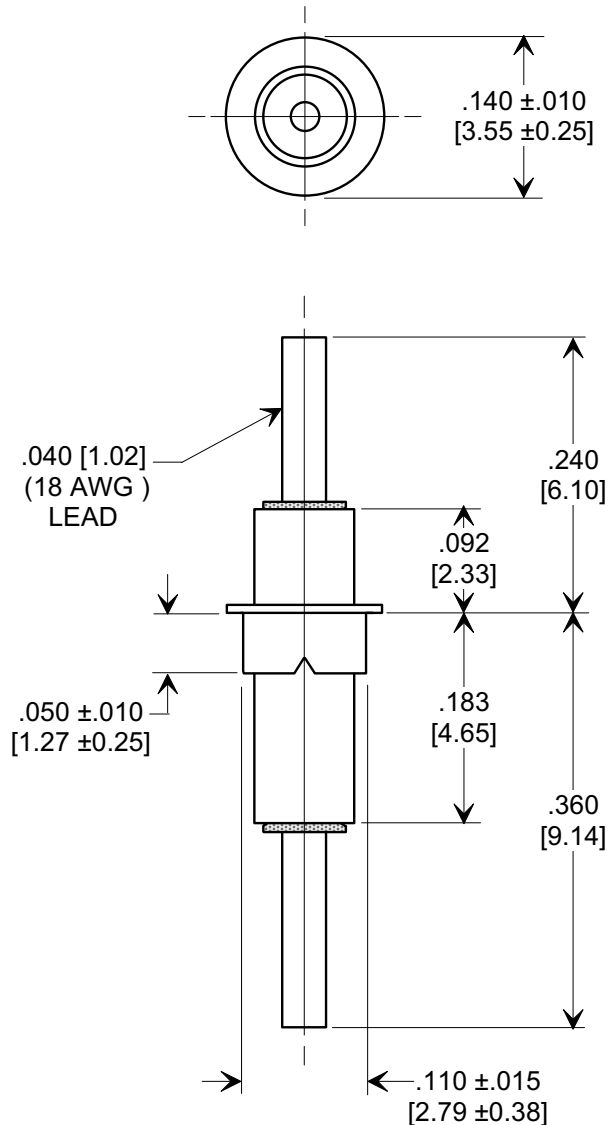
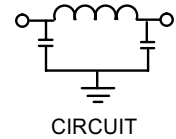
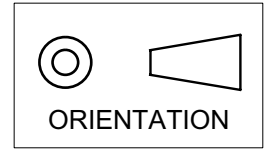



Electrical Testing  
per Tusonix standard  
test plans and Mil-Std-202  
Test Methods.

**MARKETING SALES DRAWING**  
**DIMENSIONS IN INCHES - DO NOT SCALE THIS DRAWING**  
**DIMENSIONS IN METRIC - [ ]**



MIN. CAP. pF	WORKING VOLTAGE		I.R. MIN. @ 100 (VDC.)	DWV (VDC)	CURRENT Idc.	MINIMUM NO LOAD INSERTION LOSS (dB) AT 25°C PER MIL-STD-220			
	85°C	125°C				10 MHz	100 MHz	1 GHz	10 GHz
3000	125	50	10 G $\Omega$	250	15	7	50	65	60

X-2015 Rev-0	REVISION RECORD		ADDED DIM. .050, DWV & IR. DIM. .140 WAS .138, .092 WAS .100 & .183 WAS .196. S.M. 01-08-04	20000717-5-07	20040108-2-01	--TOLERANCES-- Unless Otherwise Specified		Title  EYELET STYLE EMI FILTER				
	Original Release C.O. 2910	0				DECIMAL ± .031 [0.79]						
	RND TO COMP FMT. S.M. 07-13-00					ANGLES ± 		Drawn S.M. 07-13-00		Scale 6 X		
	TUCSON, ARIZONA					Approved T.C. 07-13-00						
						A	4100-003					

# Mouser Electronics

Authorized Distributor

Click to View Pricing, Inventory, Delivery & Lifecycle Information:

[Tusonix / CTS:](#)

[4100-000LF](#) [4100-003LF](#)