

Series 222P Datasheet

6.2 x 6.2mm IP67 Rated Tactile Switch

- Surface mount gull wing and J-bend terminal configurations
- Compatible with IR reflow, and manual soldering
- Variety of operating force & actuator height options
- IP67 protection
- Long life
- Excellent tactile feel



Ordering Information

| Series | Terminal Type | Actuating Direction | Actuator Height “L” | Actuation Force | Packaging | Contact and Terminal Plating | | | | | | | | | | |
|--------|--|---|--|-----------------|-------------------------|------------------------------|----------------------|--|---|--|-------|-----------------------|--------|---------------|------|--|
| 222P | M | V | A | A | R | D | | | | | | | | | | |
| | <table><tr><th>Code</th><th>Spec.</th></tr><tr><td>M</td><td>Surface mount gull wing</td></tr><tr><td>J</td><td>Surface mount J bend</td></tr></table> | Code | Spec. | M | Surface mount gull wing | J | Surface mount J bend | | | <table><tr><th>Code</th><th>Spec.</th></tr><tr><td>A</td><td>200 gf, black</td></tr></table> | Code | Spec. | A | 200 gf, black | | |
| Code | Spec. | | | | | | | | | | | | | | | |
| M | Surface mount gull wing | | | | | | | | | | | | | | | |
| J | Surface mount J bend | | | | | | | | | | | | | | | |
| Code | Spec. | | | | | | | | | | | | | | | |
| A | 200 gf, black | | | | | | | | | | | | | | | |
| | | <table><tr><th>Code</th><th>Spec.</th></tr><tr><td>V</td><td>Vertical</td></tr></table> | Code | Spec. | V | Vertical | | <table><tr><th>Code</th><th>Spec.</th></tr><tr><td>R</td><td>Tape & reel packaging</td></tr></table> | Code | Spec. | R | Tape & reel packaging | | | | |
| Code | Spec. | | | | | | | | | | | | | | | |
| V | Vertical | | | | | | | | | | | | | | | |
| Code | Spec. | | | | | | | | | | | | | | | |
| R | Tape & reel packaging | | | | | | | | | | | | | | | |
| | | | <table><tr><th>Code</th><th>Spec.</th></tr><tr><td>A</td><td>5.6mm</td></tr></table> | Code | Spec. | A | 5.6mm | | <table><tr><th>Code</th><th>Spec.</th></tr><tr><td>Blank</td><td>Silver</td></tr><tr><td>D</td><td>Gold</td></tr></table> | Code | Spec. | Blank | Silver | D | Gold | |
| Code | Spec. | | | | | | | | | | | | | | | |
| A | 5.6mm | | | | | | | | | | | | | | | |
| Code | Spec. | | | | | | | | | | | | | | | |
| Blank | Silver | | | | | | | | | | | | | | | |
| D | Gold | | | | | | | | | | | | | | | |

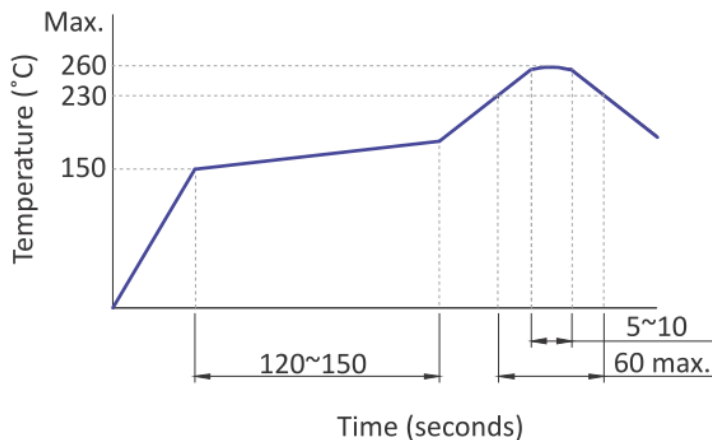
Electrical Specifications

| Parameter | Conditions & Remarks | Min | Max | Unit |
|------------------------------|-----------------------------------|------|----------------|-----------------|
| Contact Resistance | | | 100 | milliohms |
| Insulation Resistance | Between insulated terminals | 1000 | | megohms |
| Dielectric Strength | 250 VAC between adjacent switches | | 1 | minute |
| Nonswitching Rating (Silver) | | | 50 or 32 | mA or VDC |
| Nonswitching Rating (Gold) | | | 10 or 32 | mA or VDC |

Mechanical and Environmental

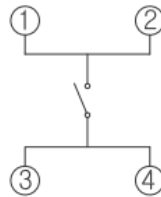
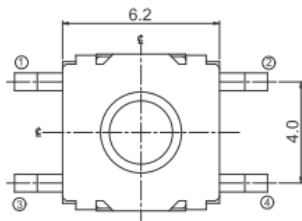
| | |
|--------------------------------------|--|
| Soldering | Maximum reflow temperature, 260°C for 5 seconds Maximum manual temperature, 350°C for 3 seconds |
| RoHS | Lead-Free. Fully compliant to RoHS Directive 2011/65/EU |
| Operating Force | 200±50 gf |
| Actuation Life | 100,000 cycles |
| Actuator Strength | 3 Kgf maximum |
| Travel | 0.25±0.15mm |
| Packaging | Standard tape and reel packaging |
| Operating Temperature Range (Silver) | -40°C to +85°C |
| Operating Temperature Range (Gold) | -40°C to +125°C |
| Storage Temperature Range (Silver) | -40°C to +85°C |
| Storage Temperature Range (Gold) | -55°C to +125°C |
| Waterproof Grade | IP67 |

Soldering Profile

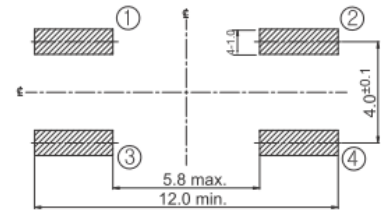


Mechanical Specifications

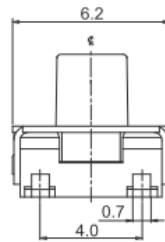
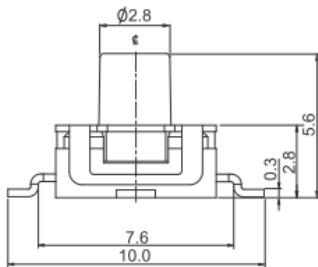
Figure 1 – 222PMV, Surface Mount Gull Wing, Actuator Height 5.6mm



CIRCUIT DIAGRAM

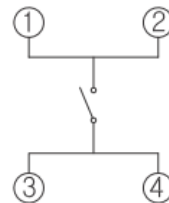
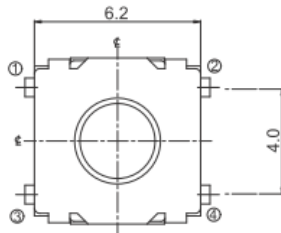


PCB LAYOUT

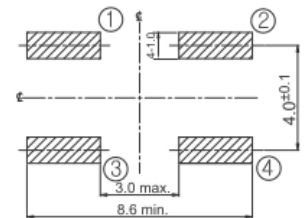


DIMENSION : mm
STANDARD TOLERANCE :
.X (1 PLACE) : ± 0.2

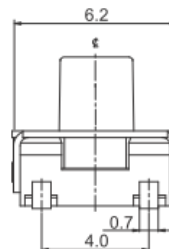
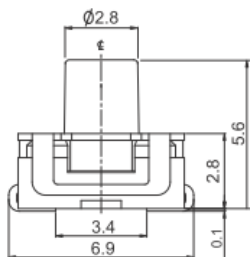
Figure 2 – 222PJV, Surface Mount J Bend, Actuator Height 5.6mm



CIRCUIT DIAGRAM



PCB LAYOUT



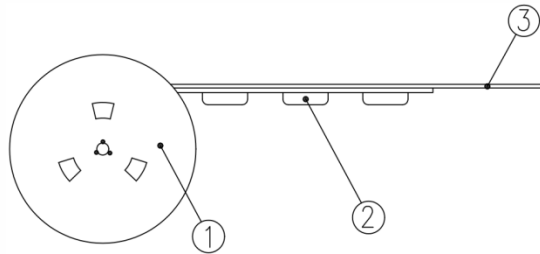
DIMENSION : mm
STANDARD TOLERANCE :
.X (1 PLACE) : ± 0.2

Packing: Tape and Reel

Surface Mount Gull Wing/J-Bend, Actuator Height 5.6mm

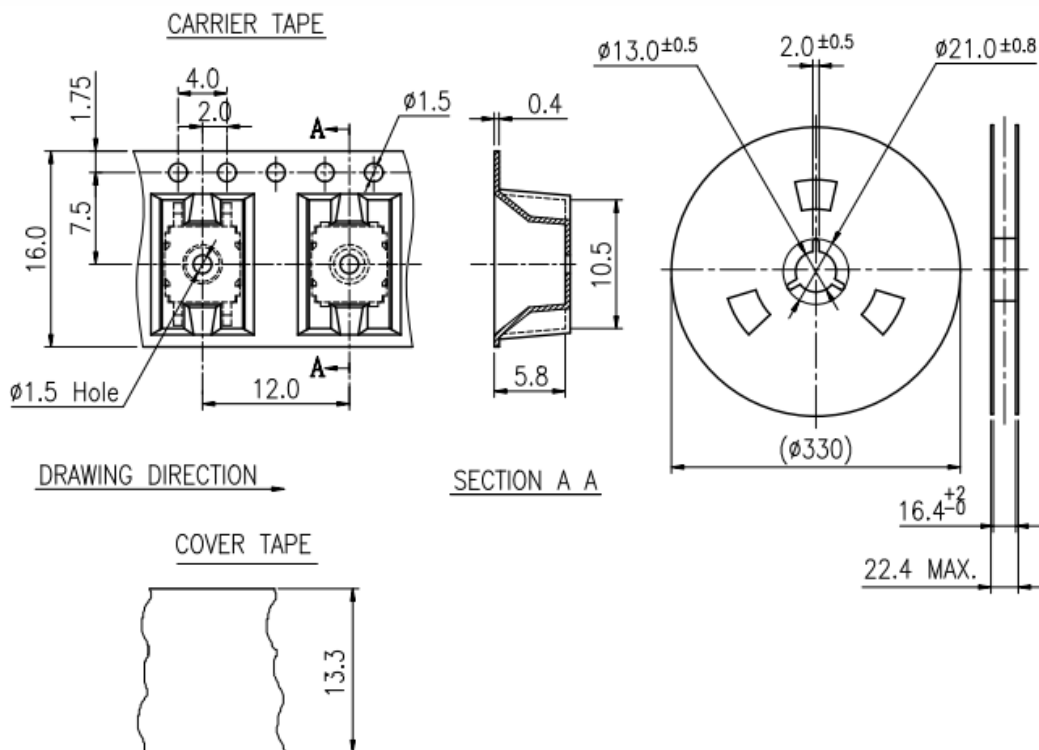
The packing specifications:

1. Structure and materials:



| No | PART NAME | MATERIAL |
|----|--------------|-------------|
| ① | REEL | POLYSTYRENE |
| ② | CARRIER TAPE | POLYSTYRENE |
| ③ | COVER TAPE | POLYESTER |

2. Packing quantity: 1,000 pcs/reel
3. More than 10 empty pockets should remain at each end of the carrier tape for each reel.
4. Shortage of less than 10 pcs a reel is acceptable but no more than 3 consecutive empty pockets are allowed.
5. Stripping strength of cover tape is between 10 gf to 130 gf and stripping angle should be within 165°~180°.
6. The product in the pocket of carrier tape should be placed in a specified correct position.
7. Tape and reel per EIA-481.
8. Dimensions:



Mouser Electronics

Authorized Distributor

Click to View Pricing, Inventory, Delivery & Lifecycle Information:

CTS:

[222PJVAAR](#) [222PMVAAR](#) [222PMVAARD](#) [222PJVAARD](#)