

Für diese Unterlage behalten wir uns alle Rechte vor, auch für den Fall der Patentverletzung oder Gebrauchsmusterverletzung. Sie darf ohne unsere vorherige schriftliche Zustimmung weder vervielfältigt noch sonstwie benutzt, noch Dritten zugänglich gemacht werden.

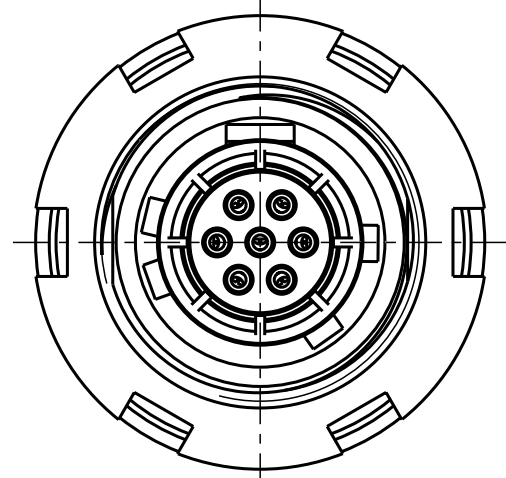
Nur rot gestempelte oder auf Laufkarte gedruckte Dokumente unterliegen dem Änderungsdienst und sind zur Fertigung freigegeben. Only red stamped or on jobcard printed documents are managed. These documents are approved for production.

All Rights reserved, including possible patents or trademarks. Documents shall not be provided to a third party or duplicated in any form without prior written permission.

CAD: Pro/ENGINEER

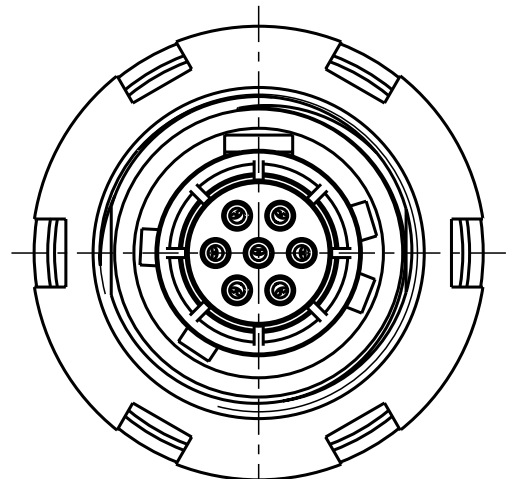
Additional coding

View in direction A



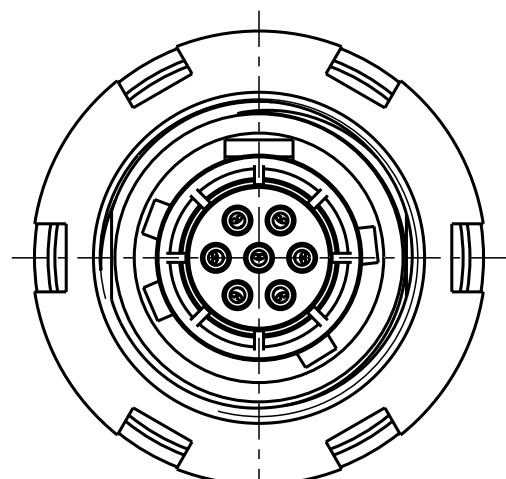
GKCWBM-P07WBCO-000L

Mechanical coding: B
Color coding: red



GKCWCM-P07WBCO-000L

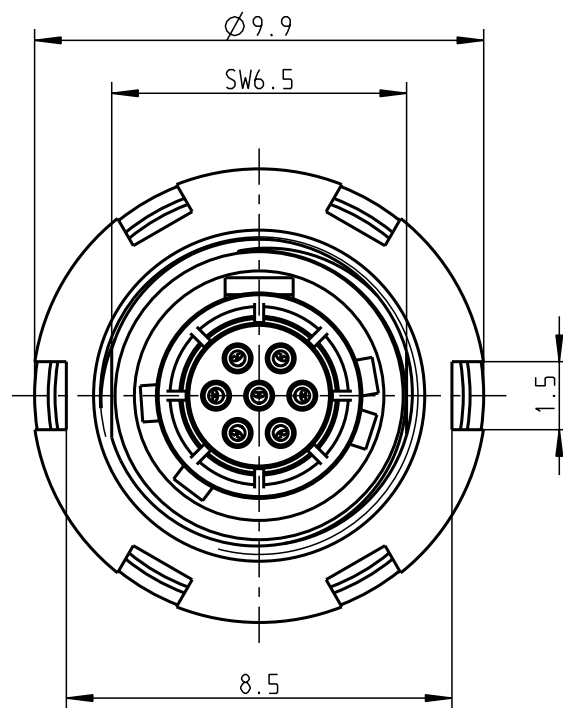
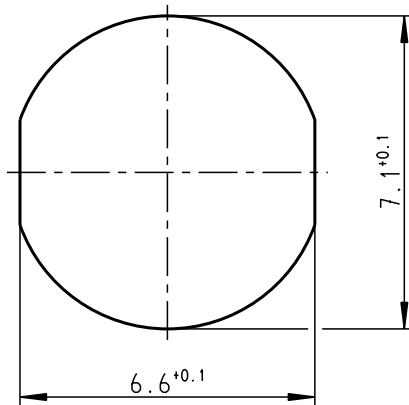
Mechanical coding: C
Color coding: blue



GKCWDM-P07WBCO-000L

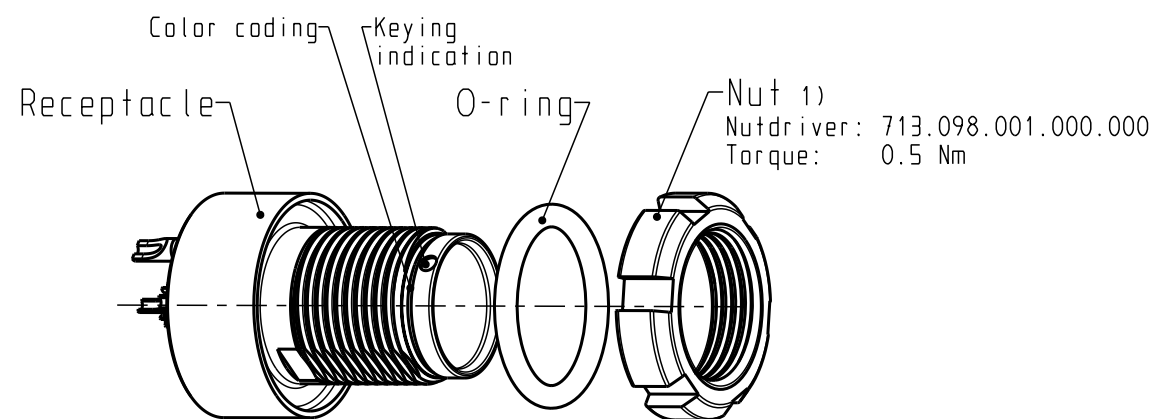
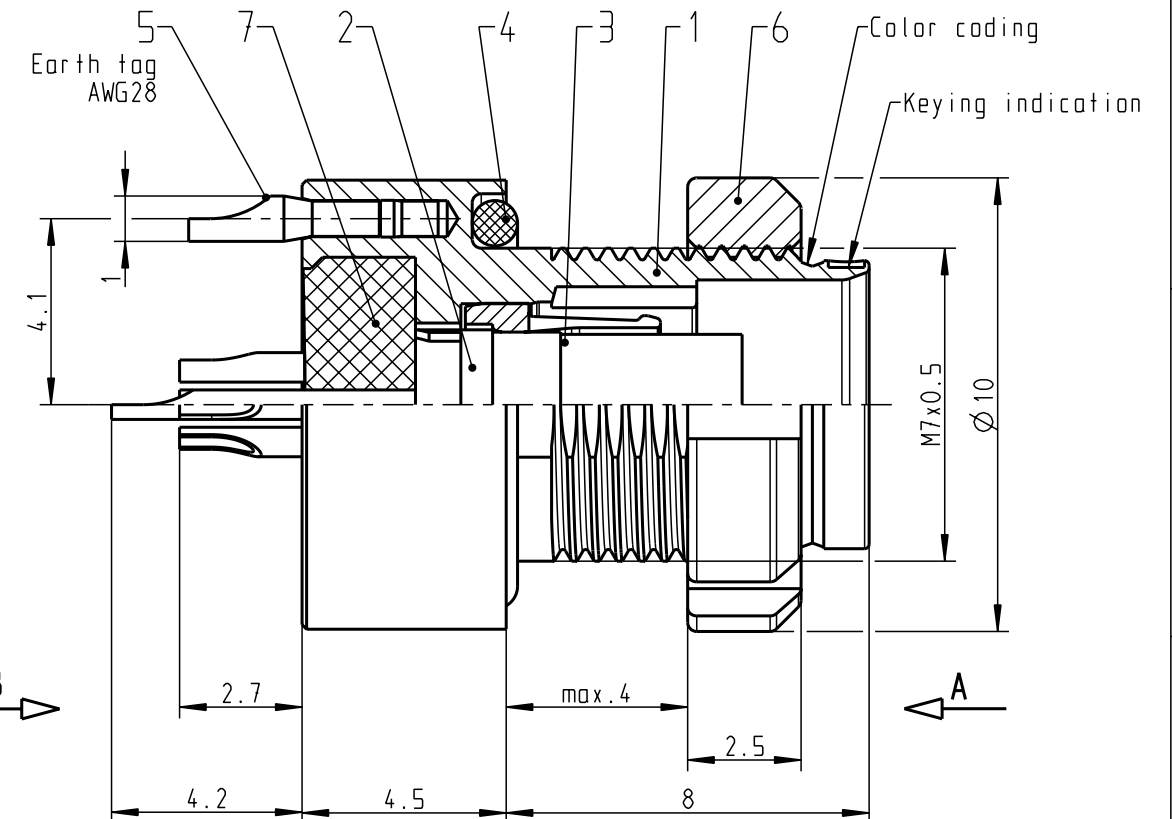
Mechanical coding: D
Color coding: green

Panel cut-out



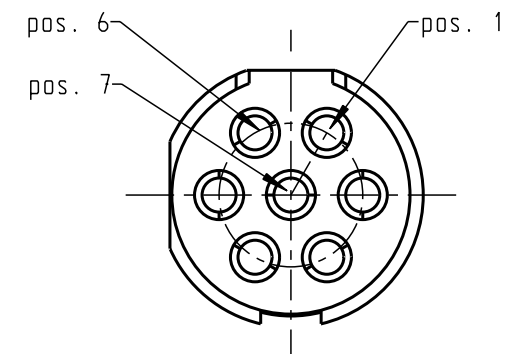
GKCWAM-P07WBCO-000L

Mechanical coding: A
Color coding: light brown



Delivery condition
3:1

Only insert
View in direction B
10:1




Technical information

- Solder contacts: AWG 28
- Current load: 1A@t40° (Single contact)
- Test voltage: 750V (acc. SAE AS 13441:1998, Contact to contact)
- Rated voltage: 250V (acc. SAE AS 13441:1998) 2)

1) ODU recommend an additional locking of the nut with adhesive (e.g. Loctite 2701) to the screw thread.

2) Maximal operating voltage at sea level up to 2.000 m. Rated voltage applies no other electrical safety standard. In case other standards rule a specific use of the connector, the application specific safety criteria shall be considered first. This must be evaluated in the frame of equipment engineering.

All shown connectors are according to DIN EN 61984:2009 connectors without breaking capacity (COC)!

				General tolerances to DIN ISO 2768-mK			PE-modell-nr.:	
				Toleration to DIN ISO 8015			CAD-nr.: 00058454	sheet.:
				2014	date	name	designation:	
				prep.	13.11.	Unterblüm.	Receptacle	
				app.				
				norm.				
				 A perfect alliance.			drawing nr.:	
							GKCW.M-P07WBCO-000L	
index	notice	date	name				replacement for:	copy
								nr.



Mouser Electronics

Authorized Distributor

Click to View Pricing, Inventory, Delivery & Lifecycle Information:

ODU USA:

[GKCWAM-P07WBC0-000L](#)