

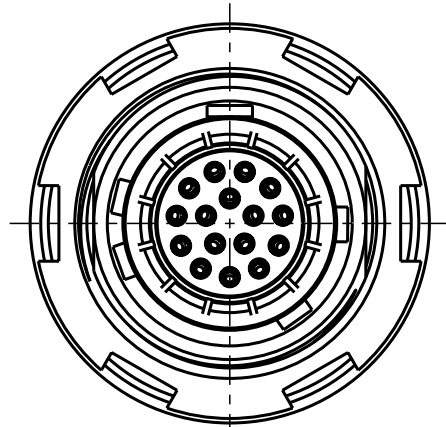
Für diese Unterlage behalten wir uns alle Rechte vor, auch für den Fall der Patentverletzung oder Gebrauchsmusterverletzung. Sie darf ohne unsere vorherige schriftliche Zustimmung weder vervielfältigt noch sonstwie benutzt, noch Dritten zugänglich gemacht werden.

Nur rot gestempelte oder auf Laufkarte gedruckte Dokumente unterliegen dem Änderungsdienst und sind zur Fertigung freigegeben. Only red stamped or on jobcard printed documents are managed. These documents are approved for production.

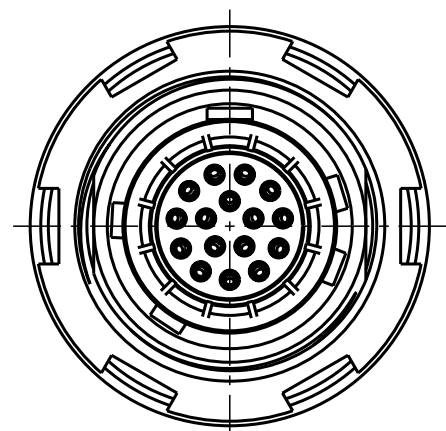
All Rights reserved, including possible patents or trademarks. Documents shall not be provided to a third party or duplicated in any form without prior written permission.

CAD: Pro/ENGINEER

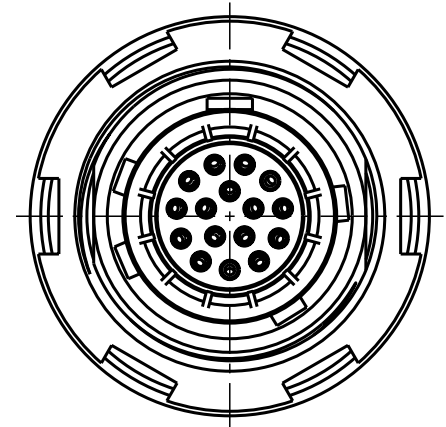
Additional coding  
View in direction A  
4:1



GKOWBM-P16UB00-000L  
Mechanical coding: B  
Color coding: red

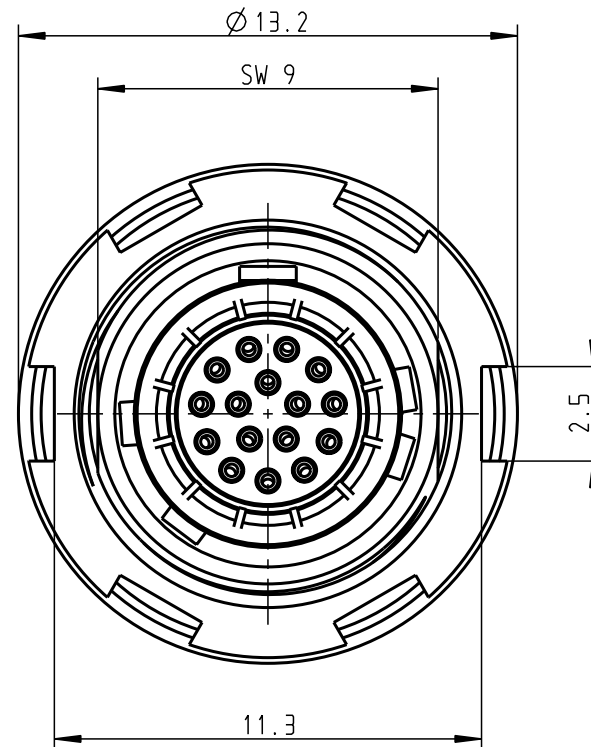
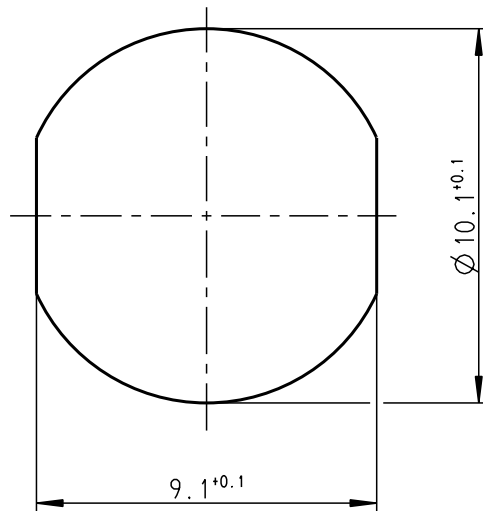


GKOWCM-P16UB00-000L  
Mechanical coding: C  
Color coding: blue

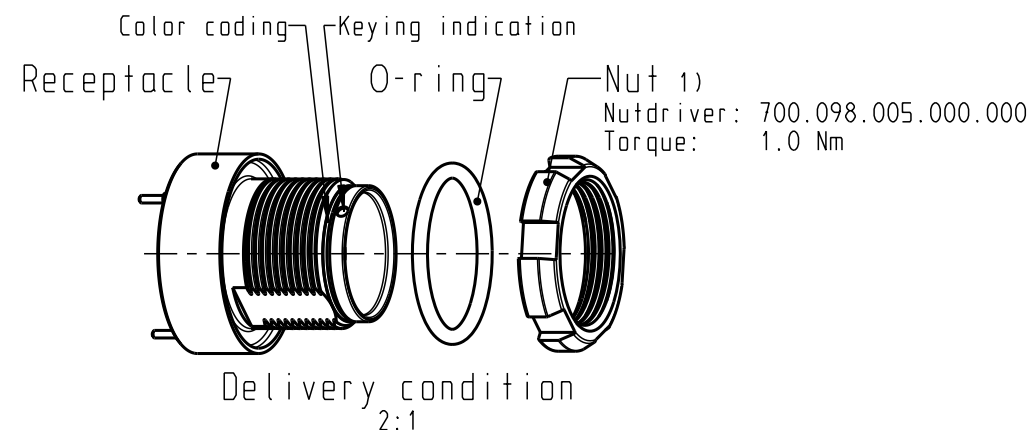


GKOWDM-P16UB00-000L  
Mechanical coding: D  
Color coding: green

Panel cut-out



GKOWAM-P16UB00-000L  
Mechanical coding: A  
Color coding: light brown



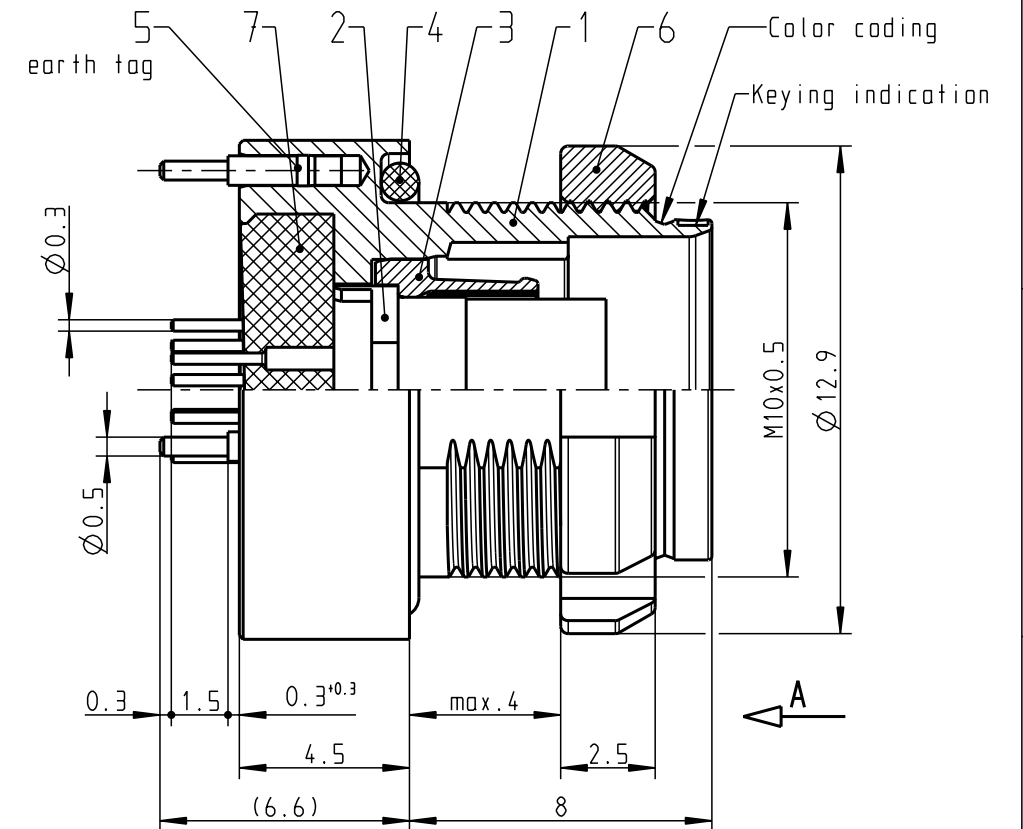
### Technical information

- Print contacts 3)
- Current load: 1A@Δ+40° (Single contact)
- Test voltage: 750V (acc. SAE AS 13441:1998, Contact to contact)
- Rated voltage: 250V (acc. SAE AS 13441:1998) 2)

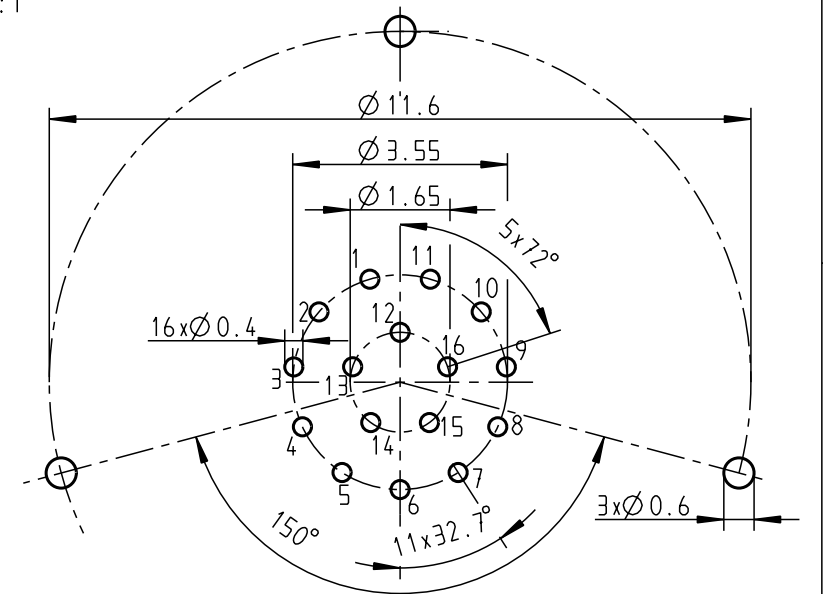
1) ODU recommend an additional locking of the nut with adhesive (e.g. Loctite 2701) to the screw thread.

2) Maximal operating voltage at sea level up to 2.000 m. Rated voltage applies no other electrical safety standard. In case other standards rule a specific use of the connector, the application specific safety criteria shall be considered first. This must be evaluated in the frame of equipment engineering.


3) The recommended thickness of the PCB is about 1.2 mm. Other versions are available on request.



PCB-Layout  
View in mating direction A  
8:1



All shown connectors are according to DIN EN 61984:2009 connectors without breaking capacity (COC!)

				General tolerances to DIN ISO 2768-mK  Toleration to DIN ISO 8015			PE-modell-nr.:		
							CAD-nr.:	00058444	sheet.:
				2014	date	name	designation:		scale:
				prep.	13.11.	Unterblüm.	Receptacle		5:1
				app.					
				norm.					
				 <i>A perfect alliance.</i>			drawing nr.:		copy
							GKOW.M-P16UB00-000L		
index	notice	date	name				replacement for:		nr.



# Mouser Electronics

Authorized Distributor

Click to View Pricing, Inventory, Delivery & Lifecycle Information:

ODU USA:

GK0WAM-P16UB00-000L