

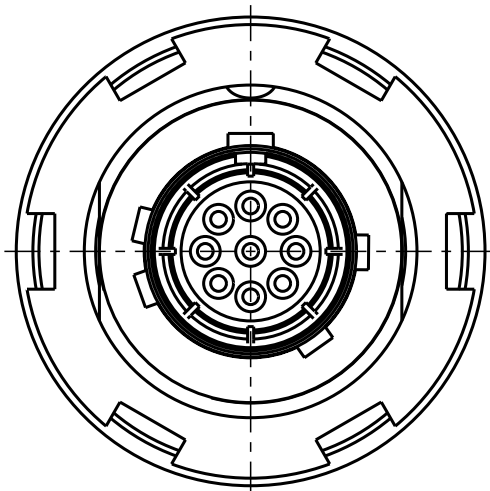
Für diese Unterlage behalten wir uns alle Rechte vor, auch für den Fall der Patenterteilung oder Gebrauchsmustererteilung. Sie darf ohne unsere vorherige schriftliche Zustimmung weder vervielfältigt noch sonstwie benutzt, noch Drillen zugänglich gemacht werden.

Nur rol gestempelte oder auf Laufkarte gedruckte Dokumente unterliegen dem Änderungsdienst und sind zur Fertigung freigegeben. Only red stamped or on jobcard printed documents are managed. These documents are approved for production.

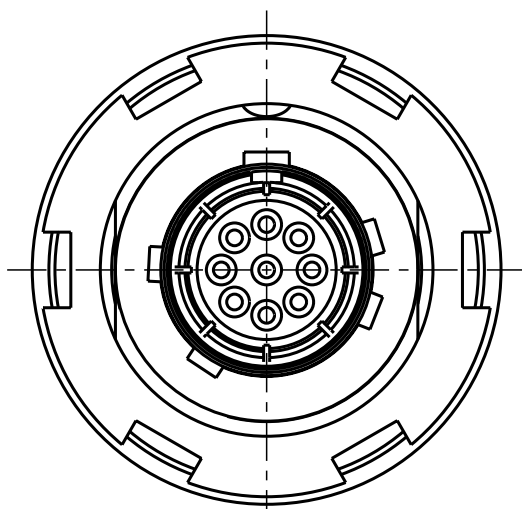
All Rights reserved, including possible patents or trademarks. Documents shall not be provided to a third party or duplicated in any form without prior written permission.

CAD: Pro/ENGINEER

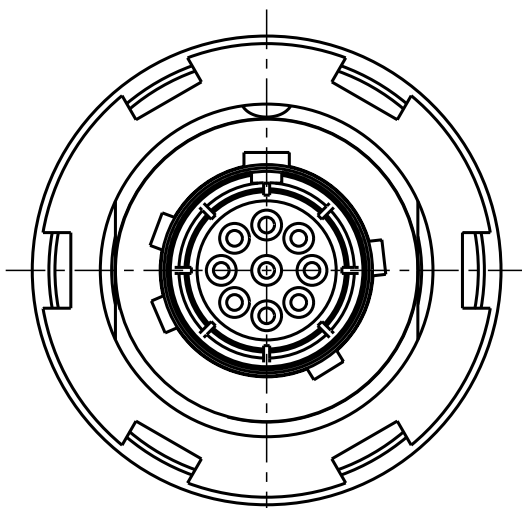
Additional coding
View in direction A



G80YBR-P09UC00-000L
Mechanical coding: B
Color Coding: red

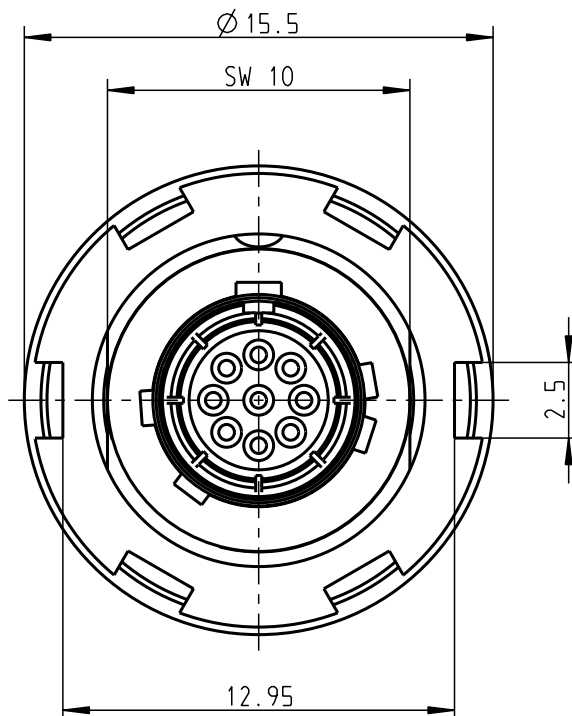
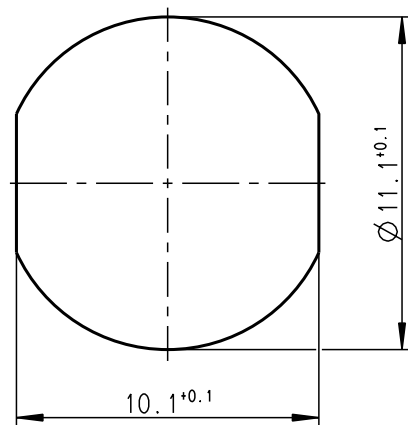


G80YCR-P09UC00-000L
Mechanical coding: C
Color Coding: blue

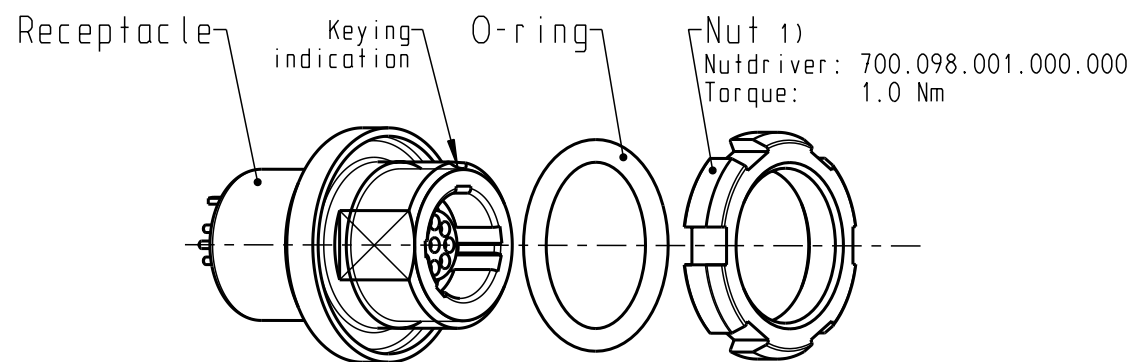
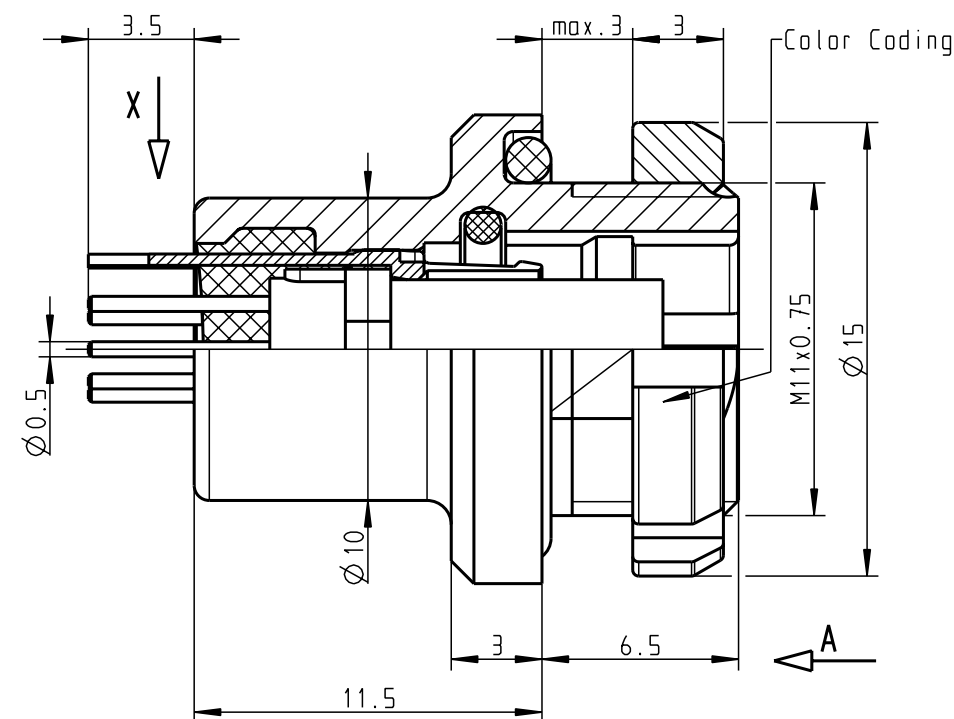


G80YDR-P09UC00-000L
Mechanical coding: D
Color Coding: green

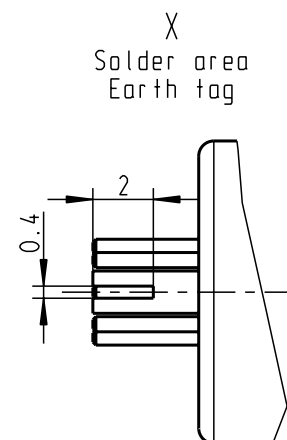
Panel cut-out



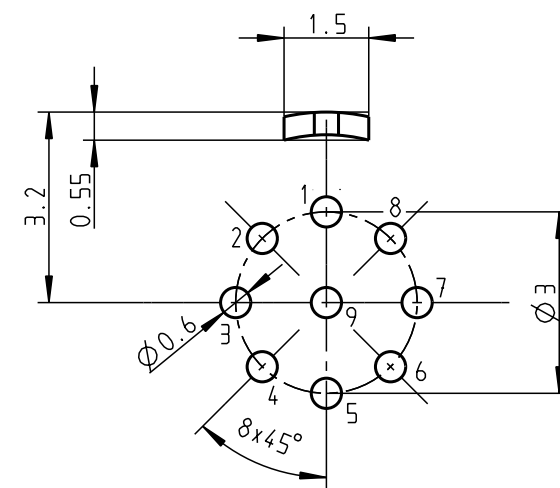
G80YAR-P09UC00-000L
Mechanical coding: A
Color Coding: light brown



Delivery condition
2:1



PCB-Layout
View in mating direction A
8:1



Technical information

- Print contacts:
- Current load: 5A@Δ+40° (Single contact)
3.25A@Δ+40° (Insert)
- Test voltage: 600V (acc. SAE AS 13441:1998, Contact to contact)
- Rated voltage: 200V (acc. SAE AS 13441:1998) 2)
- For more technical information and accessories see catalogue (www.odu.de/amc)

- 1) ODU recommend an additional locking of the nut with adhesive (e.g. Loctite 2701) to the screw thread.
- 2) Maximal operating voltage at sea level up to 2.000m. Rated voltage applies no other electrical safety standard. In case other standards rule a specific use of the connector, the application specific safety criteria shall be considered first. This must be evaluated in the frame of equipment engineering.

All shown connectors are according to DIN EN 61984:2009 connectors without breaking capacity (COC)!

						PE-modell-nr.:	
						CAD-nr.:	sheet.:
						00051399	
				2011	date	name	designation:
				prep.	27.12.	Weigand	Receptacle style 8
				app.			AMC Standard Version
				norm.			drawing nr.:
						G80Y.R-P09UC00-000L	scale:
							4:1
							copy
							nr.
index	notice	date	name			replacement for:	



otto dunkel gmbh

Mouser Electronics

Authorized Distributor

Click to View Pricing, Inventory, Delivery & Lifecycle Information:

ODU USA:

G80YAR-P09UC00-000L