

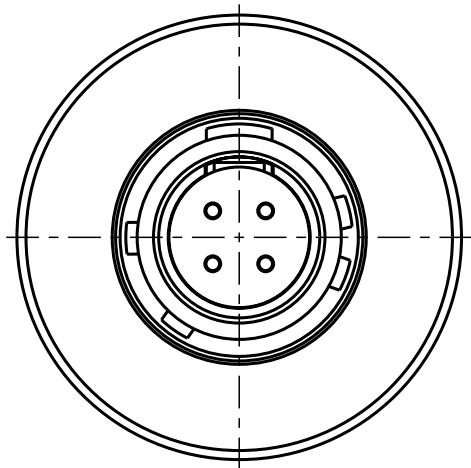
Für diese Unterlage behalten wir uns alle Rechte vor, auch für den Fall der Patentverletzung oder Gebrauchsmusterverletzung. Sie darf ohne unsere vorherige schriftliche Zustimmung weder vervielfältigt noch sonstwie benutzt, noch Dritten zugänglich gemacht werden.

Nur rot gestempelte oder auf Laufkarte gedruckte Dokumente unterliegen dem Änderungsdienst und sind zur Fertigung freigegeben. Only red stamped or on jobcard printed documents are managed. These documents are approved for production.

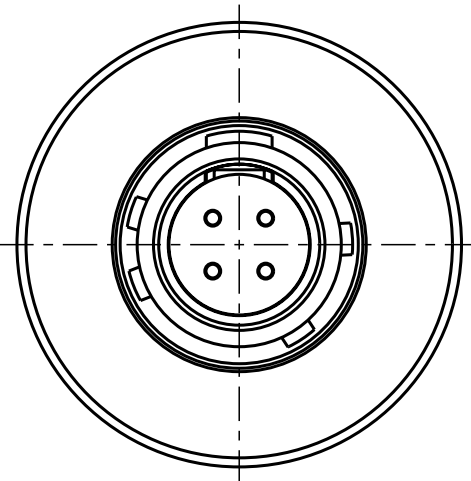
All Rights reserved, including possible patents or trademarks. Documents shall not be provided to a third party or duplicated in any form without prior written permission.

CAD: Pro/ENGINEER

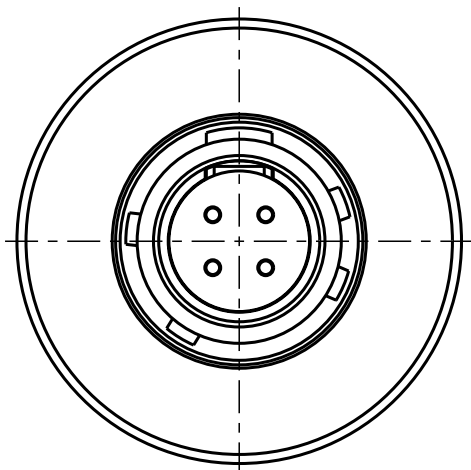
Additional coding  
View in direction B



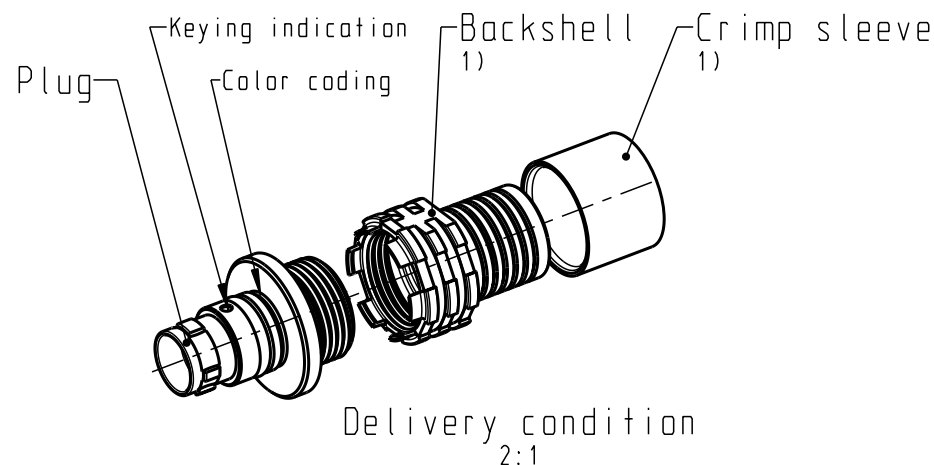
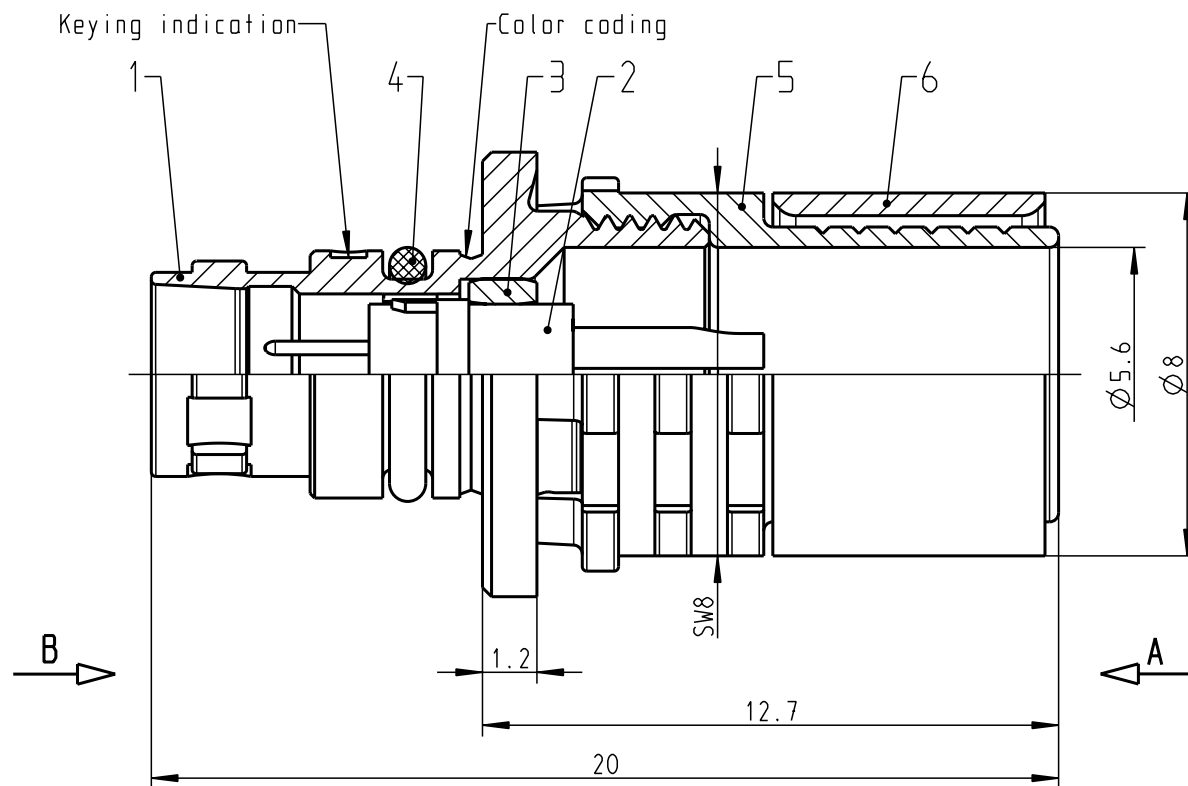
A1CWBM-PU4XBMO-0000  
Mechanical coding: B  
Color coding: red



A1CWC-PU4XBMO-0000  
Mechanical coding: C  
Color coding: blue



A1CWD-PU4XBMO-0000  
Mechanical coding: D  
Color coding: green



### Technical information

- Max. cable Ø5.0mm (Based on cable with one braided shield)
- Solder contacts: AWG 24/AWG 28
- Current load: 3A@+40° (Single contact, AWG24)  
1A@+40° (Single contact, AWG28)
- Test voltage: 750V (acc. SAE AS 13441:1998, Contact to contact)
- Rated voltage: 250V (acc. SAE AS 13441:1998) 2)

1) For crimp information, torque, etc. see assembly instruction 010.650.001.000.001 ([www.odu.de/downloads](http://www.odu.de/downloads))

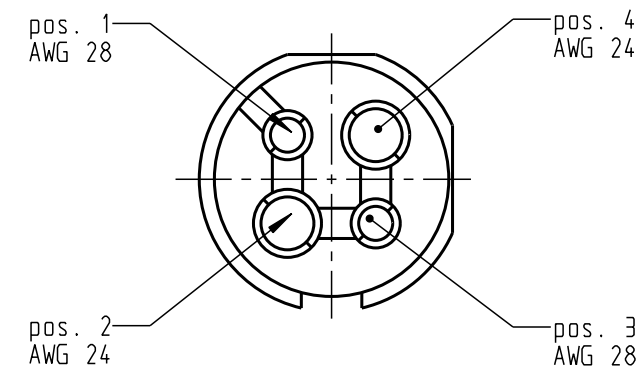
2) Maximal operating voltage at sea level up to 2.000 m. Rated voltage applies no other electrical safety standard. In case other standards rule a specific use of the connector, the application specific safety criteria shall be considered first. This must be evaluated in the frame of equipment engineering.


All shown connectors are according to DIN EN 61984:2009 connectors without breaking capacity (COC)!

Connection diagramm			
pos	name	color	description
1	D-	white(gold*)	Data-
2	VBUS	red	+5V
3	D+	green	Data+
4	GND	black(blue*)	Ground

\*some manufacturers use

Only insert  
View in direction A  
10:1



				General tolerances to to DIN ISO 2768-mK			PE-modell-nr.:		
				Toleration to DIN ISO 8015			CAD-nr.:	00058438	sheet.:
				2014	date	name	designation:		scale:
				prep.	13.11.	Aigner	Break-Away Plug		6:1
				app.					
				norm.					
				 <i>A perfect alliance.</i>			drawing nr.:	copy	
							A1CW.M-PU4XBM0-0000		
index	notice	date	name				replacement for:		nr.

# Mouser Electronics

Authorized Distributor

Click to View Pricing, Inventory, Delivery & Lifecycle Information:

ODU USA:

[A1CWAM-PU4XBM0-0000](#)