

# Temperature Compensated Crystal Oscillator Voltage Trim

## CVT32 Model

3.2x5.0 mm SMD, 3V, TCVCXO

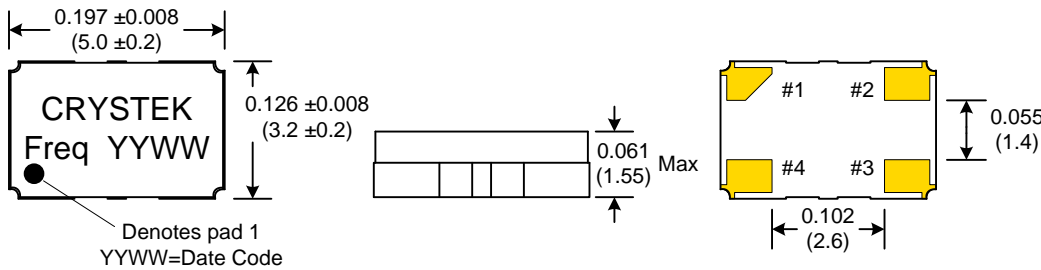
<b>Frequency Range:</b>	10 MHz to 30 MHz
<b>Calibration Tolerance:</b>	±1.5ppm
<b>Frequency Stability:</b>	±2.5ppm
<b>Temperature Range:</b>	-20°C to 80°C
<b>Storage:</b>	-40°C to 90°C
<b>Input Voltage:</b>	3.0V ±10%
<b>Input Current:</b>	1.2mA Typical, 2mA Max
<b>Output:</b>	0.8Vp-p Min
Waveform:	Clipped Sine
Load:	6-15 kohm // 2-10pF
<b>Voltage Control:</b>	1.5V ± 1.0V
Vcont Trim:	±4ppm Min, ±12ppm Max
<b>Harmonics:</b>	-9 dBc Max
<b>Phase Noise:</b>	10Hz offset -83 dBc/Hz Max
	100Hz offset -115 dBc/Hz Max
	1kHz offset -135 dBc/Hz Max
	10kHz offset -140 dBc/Hz Max
<b>Aging:</b>	1ppm Max per year



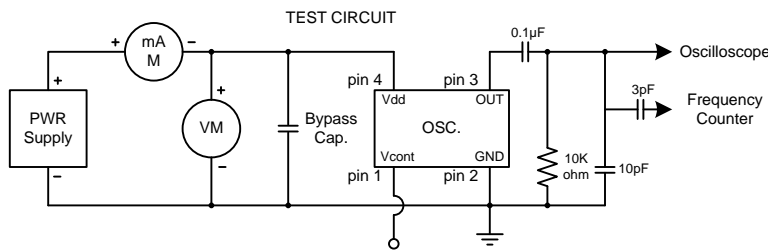
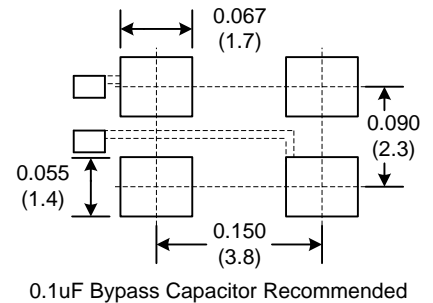
Designed to meet today's requirements for precision operation and small layout applications. Temperature compensation is accomplished through digital technology. Standard packaging is 1k tape and reel.

Dimensions inches (mm)

All dimensions are Max unless otherwise specified.

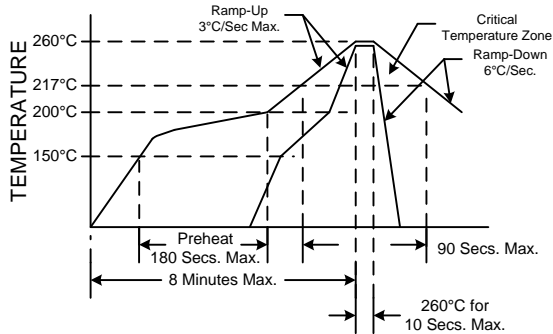


### SUGGESTED PAD LAYOUT



PIN	Function
1	Vcont
2	GND
3	OUT
4	VDD

### RECOMMENDED REFLOW SOLDERING PROFILE



### Crystek Part Number Guide

Part Number	Frequency Stability
CVT32-Frequency	± 2.5ppm
Example: P/N CVT32-19.680MHZ = 3.0V Input Voltage ±1.5ppm Calibration Tolerance ±2.5ppm Frequency Stability -20°C to 80°C Operating Temp. Volt. Trim, Clipped Sinewave	

Note\* Not Recommended for ultrasonic wash

Specifications subject to change without notice.

Rev: K  
Date: 02-Mar-2016  
Page 1 of 1

# Mouser Electronics

Authorized Distributor

Click to View Pricing, Inventory, Delivery & Lifecycle Information:

Crystek:

[CVT32-20.000](#) [CVT32-10.000](#)