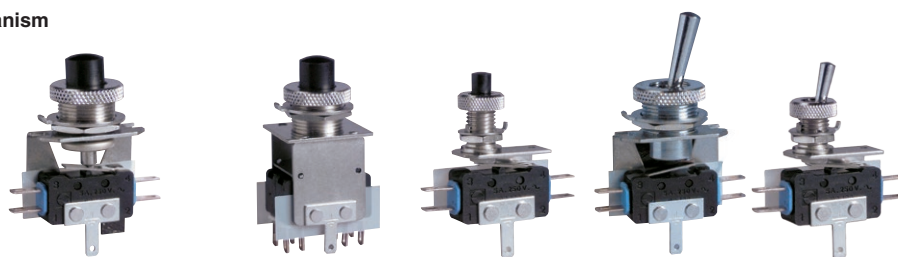


PUSHBUTTONS AND TOGGLES - SUBMINIATURE

8354

- › Double-break flexible leaf snap-action mechanism
- › Momentary or maintained action
- › Changeover-SPDT microswitch as standard
- › One, two, three and four-pole configurations
- › Long life
- › Ratings from 1 mA 4 V_{DC} to 6 A 250 V_{AC}
- › Operating temperature -40 °C up to +125 °C



Main specifications

		Pushbuttons					Toggles	
		Action	Momentary	Momentary + Maintained*	Momentary	Momentary + Maintained*	Momentary	Maintained 2 positions
		Features	Large button Side outputs	83540	Large button Rear outputs	83543	Small button Side outputs	Large lever Side outputs
			83542	83540	83543	83541	83547	83544
								Small lever Side outputs
								83546
Function	Connections							
1-pole (8354-0)	I (changeover) W2 (solder)		83542002	83540001	-	-	83547001	83544001
2-pole (8354-3)	I (changeover) W2 (solder)		83542301	83540301	83543301	83541301	83547301	83544301
3-pole (8354-6)	I (changeover) W2 (solder)		83542601	83540601	83543601	83541601	83547602	83544601
Electrical characteristics								
Rating nominal / 250 V AC (A)			6	6	6	6	6	6**
Rating thermal / 250 V AC (A)			11	11	11	11	11	11**
Mechanical characteristics								
Maximum operating force, 1-pole (N)			1.6	1.6	-	-	1	3
Maximum operating force, 2-pole (N)			3.2	3.2	3,2	3,2	2	4
Maximum operating force, 3-pole (N)			4.8	4.8	4,8	4,8	3	7
Maximum total travel force (N)			20	20	20	20	5	-
Pretravel (mm)			0.7	0.7	0,7	0,7	1,2	-
Total travel (mm)			5	3.9	5	3,9	3,5	30°
Ambient operating temperature (°C)			-40 → +125	-40 → +125	-40 → +125	-40 → +125	-40 → +105	-40 → +125
Mechanical life - normal travel*** (op.)			10 ⁶	-	10 ⁶	-	10 ⁶	-
Mechanical life - total travel (op.)			5 x 10 ⁵	5 x 10 ⁵	5 x 10 ⁵	5 x 10 ⁵	5 x 10 ⁵	10 ⁵
Weight, 1-pole (g)			12	13	-	-	7,5	18
Weight, 2-pole (g)			15	16	19	20	10	21
Weight, 3-pole (g)			18	19	22	23	13	24

* Push slightly for momentary action. Fully push for maintained action, to latch, then to unlatch. ** Ratings at 48 V_{AC}

*** Normal travel: until point of resistance

Additional specifications

- Buttons, toggles: PA66, POM (83547), nickel-plated steel (83544, 83546)
- Mounting brackets: zinc-plated steel
- Barrels, knurled buttons, nuts: nickel-plated brass
- Locating washer: stainless steel
- Contacts: silver alloy (gold-plated silver alloy: on request)
- Terminals: copper nickel
- Sealing cap (accessory): silicone rubber
- Degree of protection: IP40 (button side), IP50 with cap (accessory)
- Protection against electric shock: Class I
- Rated insulation voltage U_i: 250 V, 48 V (83544)
- Impulse withstand voltage U_{imp}: 2.5 kV, 0.5 kV (83544)
- Pollution degree: 3, 2 (83541, 83543, 83544)
- Certification marks: cULus on request / (CCC)

Product adaptations



- › Functions on request: normally closed (R) or normally open (C) SPST microswitches
- › 4-pole pushbuttons: 835419, 835439
- › Dual-current variants with gold-plated contacts for use from 1 mA to 5 A
- › Rear outputs on 83540, 83542, 83544, 83546 and 83547 models (1-pole only)
- › Side outputs on 83541 and 83543
- › Terminals for printed boards
- › Higher operating force on 83542 (SP3134)
- › Sealing cap accessory for IP50 protection on button side (for 83540, 83541, 83542, 83543)
- › Red button on 83540, 83541, 83542, 83543 models
- › cULus approved models

Standard product

Product made to order



Contact us

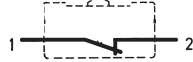
Principles (per pole)

Double break snap-action switch
Changeover - SPDT (form Za):

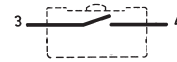


Both circuits must be used at same polarity

Normally closed - SPST-NC (form Y)

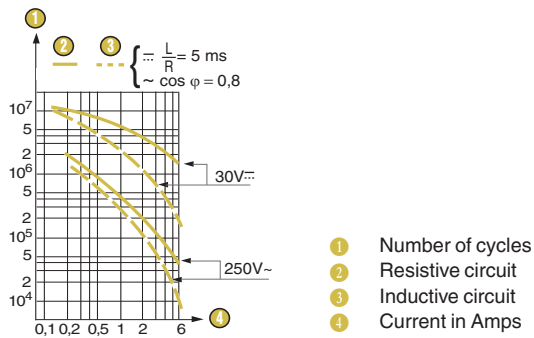


Normally open - SPST-NO (form X)



Curves

Operating curve for types 8354

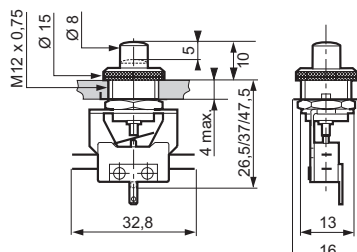


The operating curve relates to contact life, but switch durability is also limited by mechanical life of operating device : see "Mechanical life"

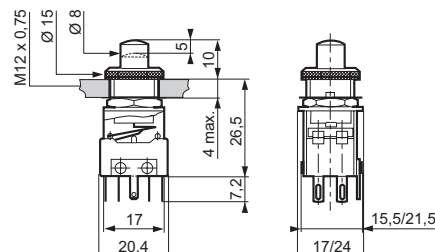
Dimensions

Products

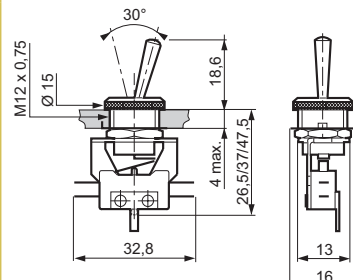
83540 - 83542



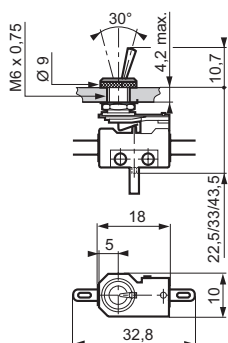
83541 - 83543



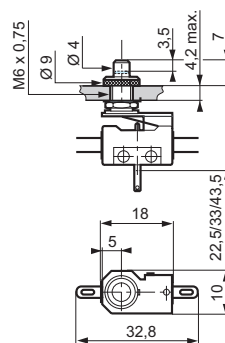
83544



83546

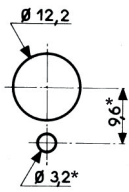


83547



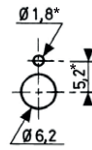
Panel cutouts

83540 - 83541 - 83542 - 83543 - 83544



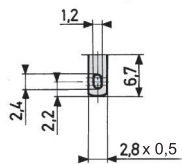
* When used with the locating washer

83546 - 83547

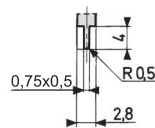


Connections

W2 solder or quick-connect 2.8 x 0.5

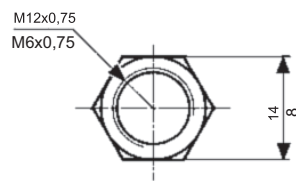


X1 for PCB (consult us)



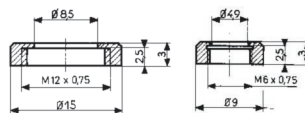
Mounting accessories

Hexagonal nuts

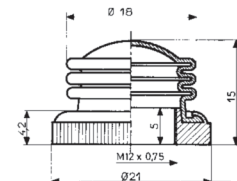


Thickness: 1.5

Knurled bezels



Sealing cap



Mounting accessories

Part numbers for accessories

70514222

70602118

70514221

70602117

70135750

70135751

Hexagonal nut-M6

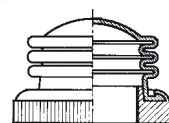
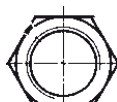
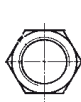
Hexagonal nut-M12

Knurled bezel-M6

Knurled bezel-M12

Sealing cap-black

Sealing cap-red



Installation recommendations

See "Basic technical concepts"

How to order

Use the 8 digit part numbers when they are defined

Other cases, precise:

Type of switch/nb of poles - Function - Connection - UL approval* - Adaptation* + Mounting accessories*

* if needed

Example: 835426 | W2 UL + 70135750

Warning:

The product information contained in this catalogue is given purely as information and does not constitute a representation, warranty or any form of contractual commitment. Crouzet Automatismes SAS and its subsidiaries reserve the right to modify their products without notice. It is imperative that we should be consulted over any particular use or application of our products and it is the responsibility of the buyer to establish, particularly through all the appropriate tests, that the product is suitable for the use or application. Under no circumstances will our warranty apply, nor shall we be held responsible for any application (such as any modification, addition, deletion, use in conjunction with other electrical or electronic components, circuits or assemblies, or any other unsuitable material or substance) which has not been expressly agreed by us prior to the sale of our products.

Mouser Electronics

Authorized Distributor

Click to View Pricing, Inventory, Delivery & Lifecycle Information:

Crouzet:

[83547025](#) [83547301](#) [83547602](#) [83541601](#) [83546601](#) [83540301](#) [83541301](#) [83544601](#) [83542601](#) [83540601](#)
[83544301](#) [83546001](#) [83546302](#) [83543601](#) [83544001](#)