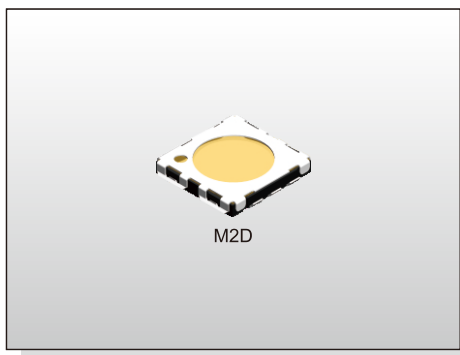


# MULTI FUNCTION SWITCH M2D SERIES

Miniature  
Double Action Type



## FEATURES

- ※Double action
- ※Compact-sized 4.1x4.3mm
- ※0.6mm height

## APPLICATION

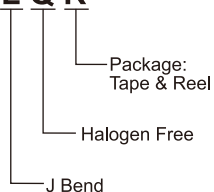
- ※Camera
- ※Mobile phone & peripherals

## SPECIFICATION

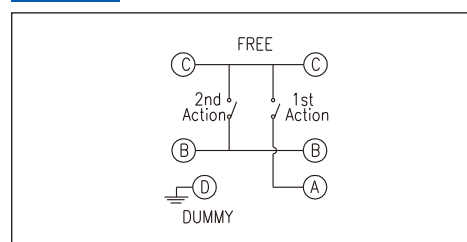
Contact Rating	10μA, 2V DC min. 20mA, 15V DC max.
Contact Resistance	500mΩ max.
Insulation Resistance	100MΩ min. 100V DC
Dielectric Strength	250V AC/1 minute
Operating Force	90±40gf, 1st 190±60gf, 2nd
Travel	0.15mm, 1st 0.30mm, 2nd
Operating Life	100,000 cycles
Operating Temp.	-20°C ~ +70°C
Storage Temp.	-40°C ~ +85°C

## HOW TO ORDER

M 2 D L Q R



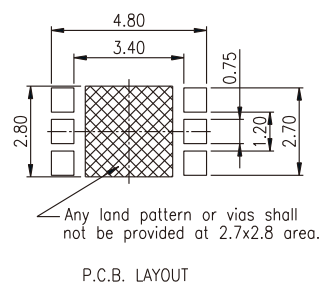
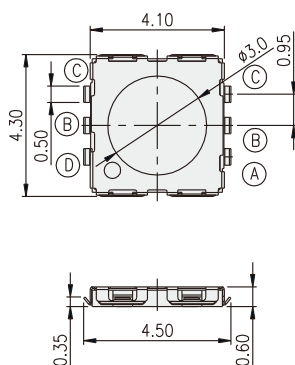
## CIRCUIT



## PACKAGE

<Tape & Reel>  
4500 pcs

## M2D



P.C.B. LAYOUT

# Mouser Electronics

Authorized Distributor

Click to View Pricing, Inventory, Delivery & Lifecycle Information:

Diptronics:

M2DLQR