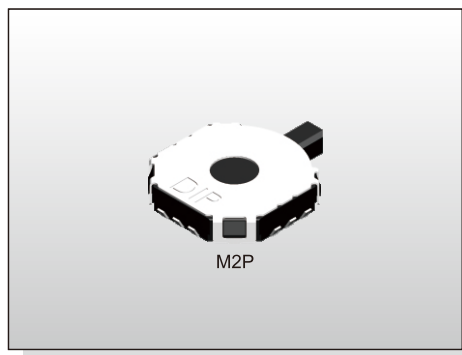


MULTI FUNCTION SWITCH M2P SERIES

Double Action
& Lever Type



FEATURES

- ※Double action with lever
- ※1.4mm height

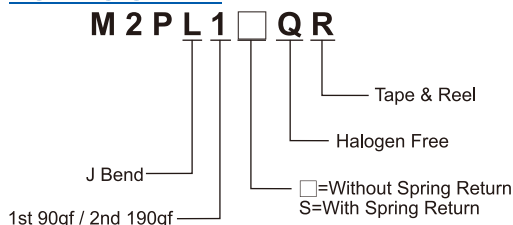
APPLICATION

- ※Camera
- ※Mobile phone & peripherals

SPECIFICATION

Contact Rating	01mA, 3V DC~10mA, 5V DC
Contact Resistance	1Ω max.
Insulation Resistance	100MΩ min. 500V DC
Dielectric Strength	100V AC/1 minute
Operating Force	Lever:70gf.cm MAX Push:90±40gf, 1st 190±60gf, 2nd
Travel	Lever:8°, 1st 20°, 2nd Push:0.15mm, 1st 0.30mm, 2nd
Operating Life	50,000 cycles
Operating Temp.	-40°C ~ +85°C
Storage Temp.	-40°C ~ +85°C

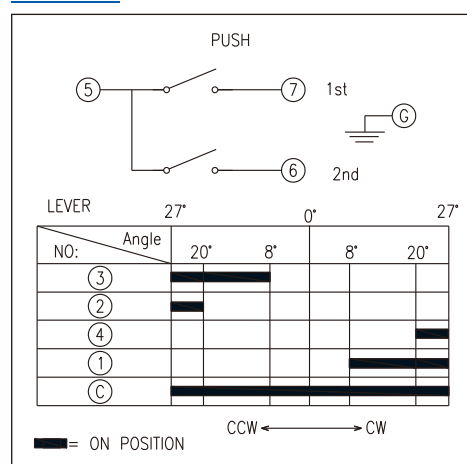
HOW TO ORDER



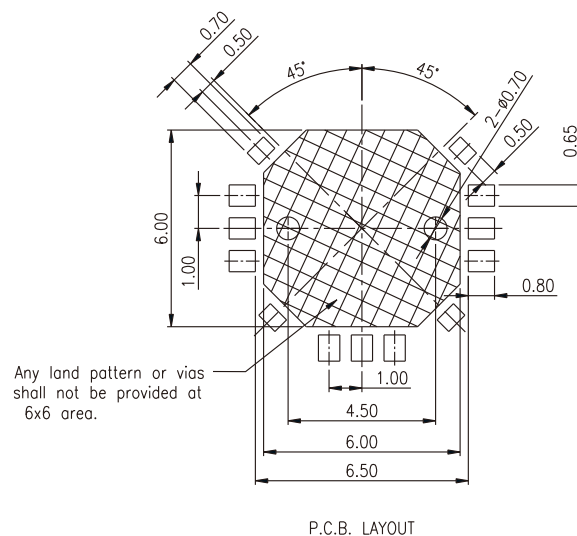
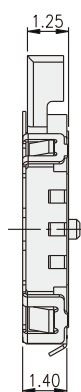
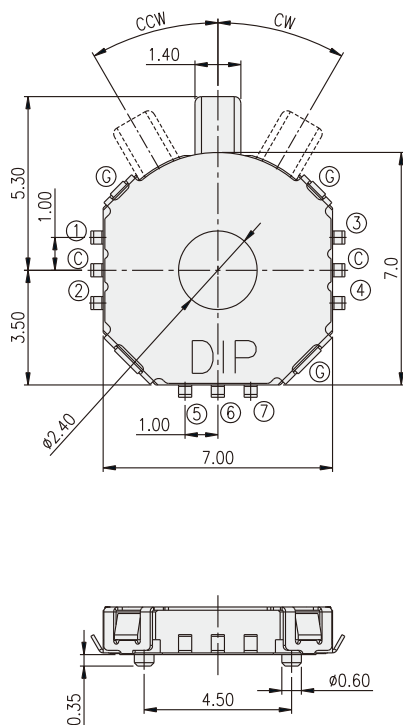
PACKAGE

<Tape & Reel>
2300 pcs

CIRCUIT



M2P



P.C.B. LAYOUT

Mouser Electronics

Authorized Distributor

Click to View Pricing, Inventory, Delivery & Lifecycle Information:

Diptronics:

M2PL1SQR