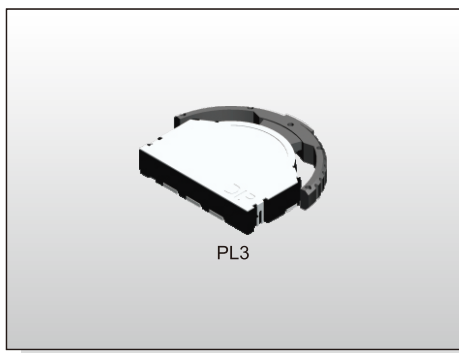


# MULTI FUNCTION SWITCH PL3 SERIES

Push & Lever  
Type



PL3

## FEATURES

※Multi function (Push & Lever)

## APPLICATION

※Remote controls  
※Volume control for variety of applications

## SPECIFICATION

|                       |   |
|-----------------------|---|
| Contact Rating        | 10mA, 5V DC                                       |
| Contact Resistance    | 100mΩ max.  |
| Insulation Resistance | 100MΩ min. 100V DC                                |
| Dielectric Strength   | 100V AC/1 minute                                  |
| Operating Force       | 70±50gf, Lever(CW, CCW)<br>200±100gf, Center push |
| Operating Life        | 100,000 cycles                                    |
| Operating Temp.       | -10°C ~ +60°C                                     |
| Storage Temp.         | -30°C ~ +80°C                                     |

## HOW TO ORDER

**P L 3 -** **C** -

Package:  
T/R=Tape & Reel

V=RoHS & Lead Free Solderable  
Q=Halogen Free

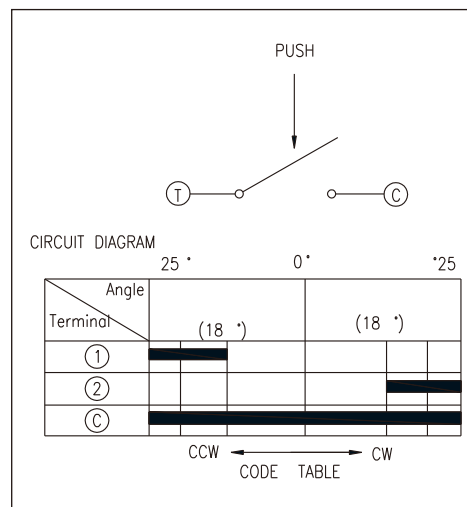
With Click Feeling

Actuator:  
A=Mounting Knob Integrated  
B=Mounting Knob

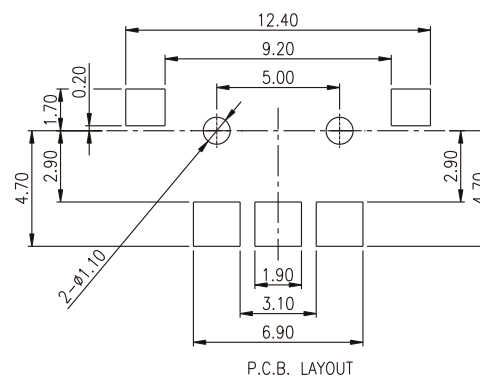
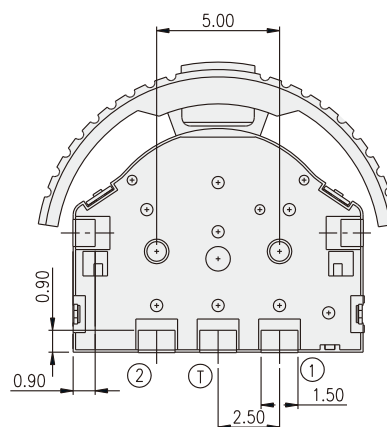
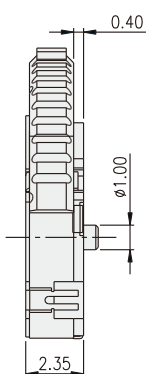
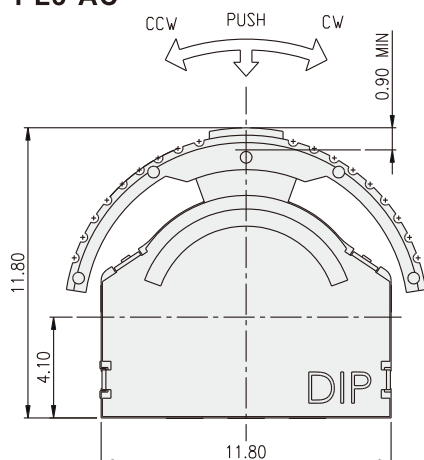
## PACKAGE

<Tape & Reel>  
900 pcs

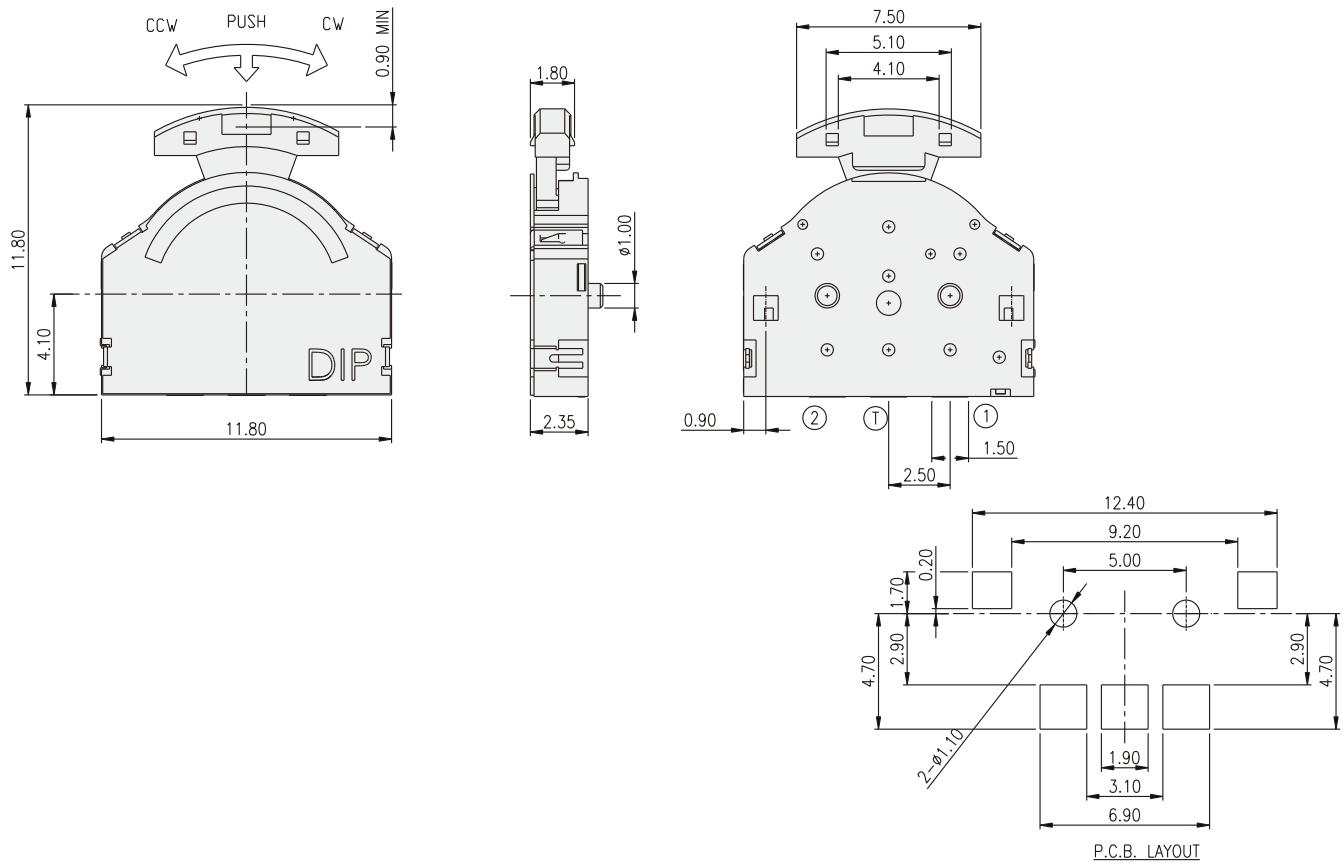
## CIRCUIT



## PL3-AC



**PL3-BC**



# Mouser Electronics

Authorized Distributor

Click to View Pricing, Inventory, Delivery & Lifecycle Information:

Diptronics:

[PL3-BC-V-T/R](#) [PL3-AC-V-T/R](#)