

### FEATURES

- ✧ Support automatic insertion
- ✧ Vertical actuation
- ✧ Dust proof structure

### APPLICATION

- ✧ Automotive
- ✧ Industrial
- ✧ Instrumentation

### SPECIFICATION

Contact Rating	50mA, 12V DC
Contact Resistance	100mΩ max.
Insulation Resistance	100MΩ min. 100V DC
Dielectric Strength	250V AC/1 minute
Operating Force	130±50gf/160±50gf 300±50gf/500±100gf
Travel	0.5mm
Operating Life	200,000 cycles for 500gf 500,000 cycles for 300gf 1,000,000 cycles for 160/130gf
Operating Temp.	-40°C ~ +85°C
Storage Temp.	-40°C ~ +85°C

### HOW TO ORDER

T 6 H - - - Q

A=Right angle series  
H=Through holes  
M=S.M.T Type  
1=6x6 ground terminal type  
2=S.M.T ground terminal type

Package Style:  
R=Tape & Reel (S.M.T. Type Only)  
B=Tube

Halogen Free

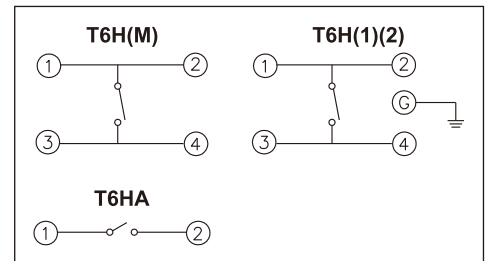
Contact Plating:  
G = Plating Ag  
A= Plating Au

Operating Force:  
2=130gf  
3=160gf  
5=300gf  
6=500gf

Total Height :

SMT/Through hole	Right angle
1=4.70mm	1=6.04mm
2=5.20mm	2=6.54mm
3=6.90mm	3=8.24mm
5=10.0mm	5=11.34mm

### CIRCUIT



### PACKAGE

#### <Tube>

T6HH, T6H1: 60 pcs

T6HA: 52 pcs

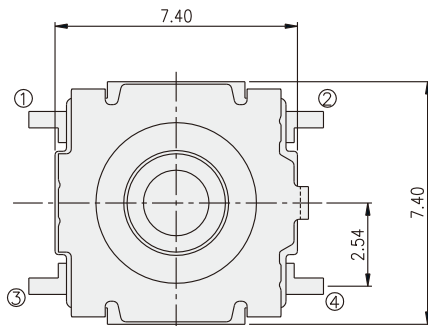
#### <Tape & Reel>

T6HM-(1)(2): 700 pcs

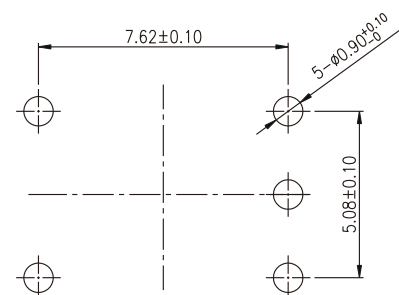
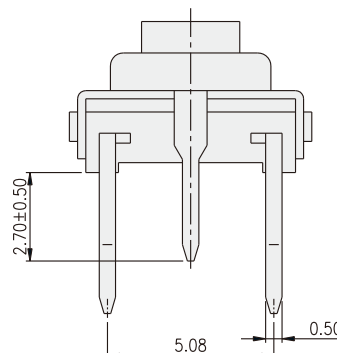
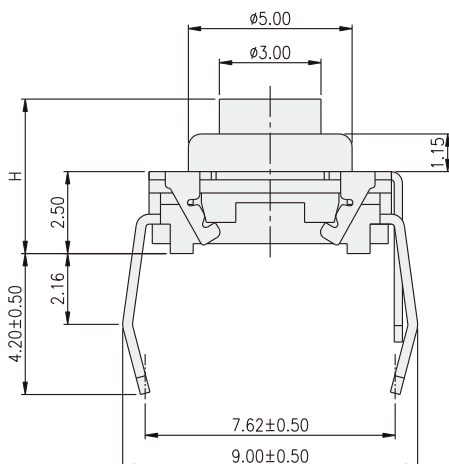
T6HM-3: 500 pcs

T6HM-5: 350 pcs

### T6H1

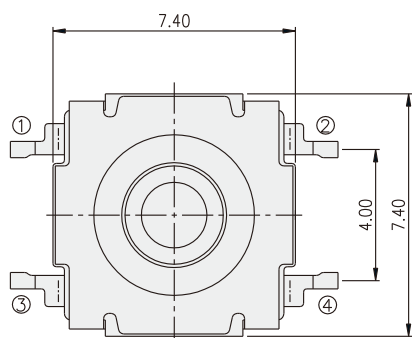


PART NO.	H
T6H1-1	4.70
T6H1-2	5.20
T6H1-3	6.90
T6H1-5	10.00

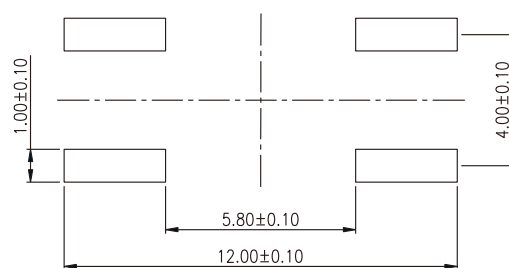
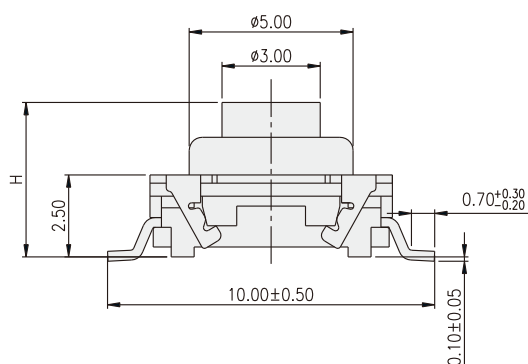


P.C.B. LAYOUT

## T6HM

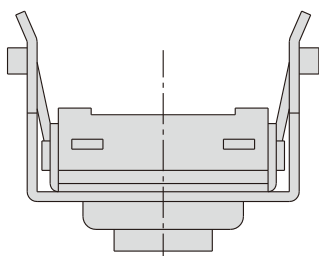


PART NO.	H
T6HM-1	4.70
T6HM-2	5.20
T6HM-3	6.90
T6HM-5	10.00

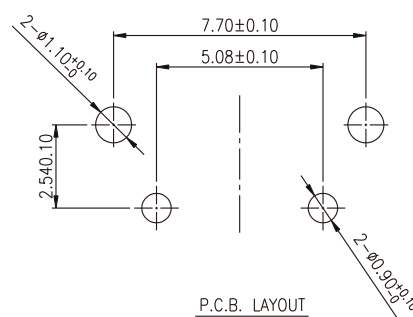
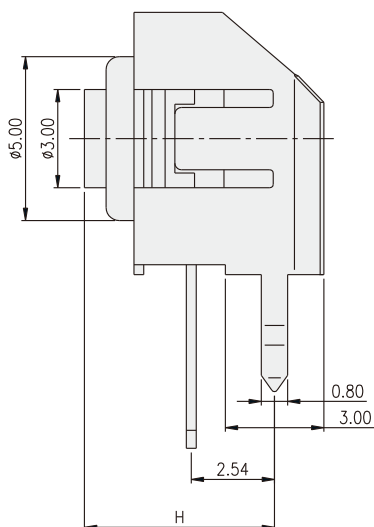
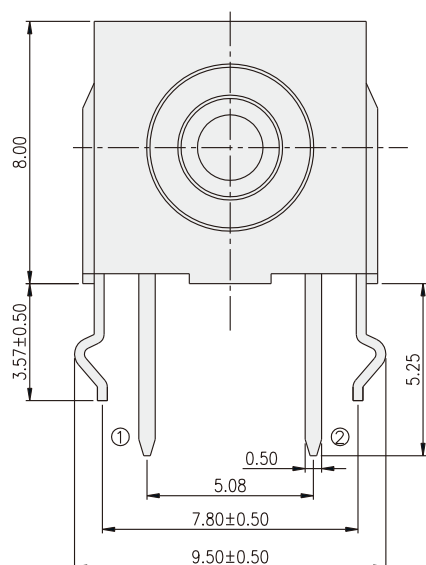


P.C.B. LAYOUT

## T6HA



PART NO.	H
T6HA-1	6.04
T6HA-2	6.54
T6HA-3	8.24
T6HA-5	11.34



P.C.B. LAYOUT

# Mouser Electronics

Authorized Distributor

Click to View Pricing, Inventory, Delivery & Lifecycle Information:

## Diptronics:

[T6HA-35GQB](#) [T6HH-12GQB](#) [T6HA-25GQB](#) [T6HA-15GQB](#) [T6HA-32GQB](#) [T6HH-33GQB](#) [T6HM-53GQR](#) [T6HA-52GQB](#) [T6HH-52GQB](#) [T6HM-13GQR](#) [T6HH-23GQB](#) [T6HA-22GQB](#) [T6HM-23GQR](#) [T6HA-23GQB](#) [T6HA-53GQB](#) [T6HA-13GQB](#) [T6HA-12GQB](#) [T6HA-33GQB](#) [T6HM-33GQR](#)