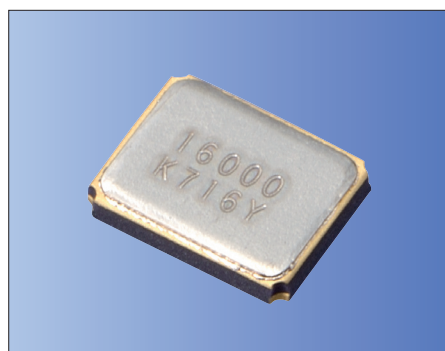


3.2x2.5mm for Consumer Products/ Mobile Communications



RoHS Compliant

Features

- Crystal unit for Consumer Products
- Miniature and low profile (3.2×2.5×0.55mm)
- Ceramic package
- Reflow compatible

Applications

- Digital Electronics
- Consumer Products
- Mobile Communications, Bluetooth®, Wireless LAN

* Bluetooth® Trademarks are owned by Bluetooth SIG, Inc.

How to Order

CX3225SB 12000 D0 G □ J CC
① ② ③ ④ ⑤ ⑥ ⑦

①Series

②Frequency

③Load Capacitance

④Frequency Tolerance

D0	8 pF	G	$\pm 15 \times 10^{-6}$
----	------	---	-------------------------

⑤Operating Temp. Range ⑥Frequency Temp. Stability

EJ	-10 to +70°C	$\pm 15 \times 10^{-6}$
LJ	-30 to +85°C	$\pm 15 \times 10^{-6}$

⑦Individual Specification
(STD Specification is "CC".)

Packaging (Tape & Reel 3000 pcs./ reel)

Specifications

Item	Symbol	Specification		Unit	Remarks
Frequency Range	f _{nom}	12000 to 54000		kHz	
Overtone Order	OT	Fundamental		—	
Load Capacitance	CL	8		pF	Please contact us for other CL requirements.
Frequency Tolerance	f _{tol}	±15		×10 ^{−6}	25°C±3°C
Motional Series Resistance	R1	Table 1		ohm	
Drive Level	DL	Table 2		μW	
Operating Temp. Range	T _{use}	−10 to +70	−30 to +85	°C	
Storage Temp. Range	T _{stg}	−40 to +85		°C	
Frequency Temp. Characteristics	f _{tem}	±15		×10 ^{−6}	Freq. deviation from the value at 25°C

Please contact us for other specifications.

Table 1 Motional Series Resistance

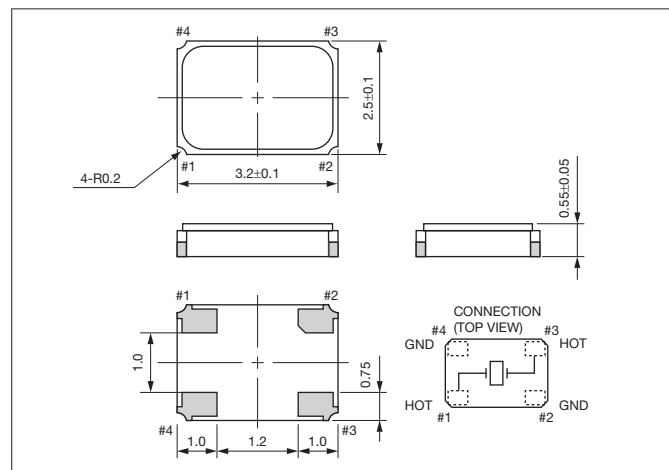
Frequency Range	Motional Series Resistance
$12000 \leq f_{\text{nom}} < 13000 \text{ kHz}$	150 Ω max.
$13000 \leq f_{\text{nom}} < 20000 \text{ kHz}$	80 Ω max.
$20000 \leq f_{\text{nom}} \leq 54000 \text{ kHz}$	50 Ω max.

Table 2 Level of Drive

Frequency Range	Level of Drive
12000≤f _{nom} ≤54000kHz	10μW (100μW max.)

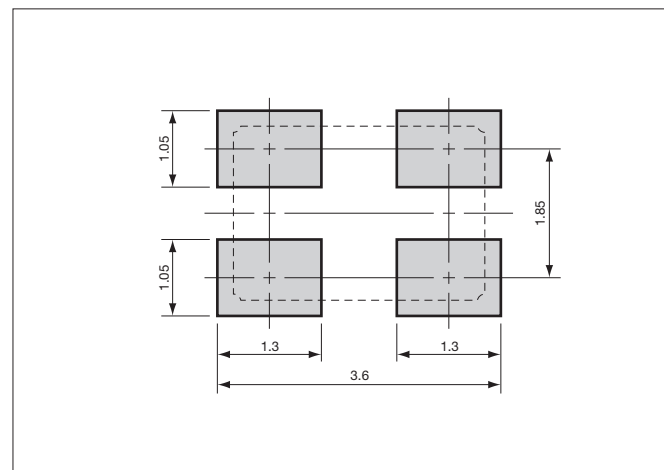
Dimensions

(Unit: mm)



Recommended Land Pattern

(Unit: mm)



Mouser Electronics

Authorized Distributor

Click to View Pricing, Inventory, Delivery & Lifecycle Information:

AVX:

[CX3225SB25000D0FRQC1](#)

Kyocera:

[CX3225SB24576D0FEQZZ](#) [CX3225SB-16.00-H2950](#) [CX3225SB-26.00-H2827](#) [CX3225SB24000D0HERZ1](#)
[CX3225SB24576H0KESZZ](#) [CX3225SB26000D0FFFC1](#) [CX3225SB48000D0FPJC2](#) [CX3225SB48000D0WPSC2](#)
[CX3225SB40000F0FFFC1](#) [CX3225SB13560D0FLJCC](#) [CX3225SB12000D0GPSCC](#) [CX3225SB24000D0GPSCC](#)
[CX3225SB24576D0GPSCC](#) [CX3225SB20000D0GPSCC](#) [CX3225SB30000D0FLJCC](#) [CX3225SB30000D0GPSCC](#)
[CX3225SB26000D0FLJCC](#) [CX3225SB49152D0GPSCC](#) [CX3225SB32000D0FLJCC](#) [CX3225SB49152D0FLJCC](#)
[CX3225SB13560D0GPSCC](#) [CX3225SB54000D0GPSCC](#) [CX3225SB16000D0GPSCC](#) [CX3225SB48000D0GPSCC](#)
[CX3225SB12288D0FLJCC](#) [CX3225SB38400D0GPSCC](#) [CX3225SB40000D0GPSCC](#) [CX3225SB20000D0FLJCC](#)
[CX3225SB27000D0FLJCC](#) [CX3225SB27000D0GPSCC](#) [CX3225SB32000D0GPSCC](#) [CX3225SB26000D0GPSCC](#)
[CX3225SB24576D0FLJCC](#) [CX3225SB19200D0GPSCC](#) [CX3225SB19200D0FLJCC](#) [CX3225SB40000D0FLJCC](#)
[CX3225SB38400D0FLJCC](#) [CX3225SB54000D0FLJCC](#) [CX3225SB25000D0GPSCC](#) [CX3225SB12288D0GPSCC](#)
[CX3225SB24000E0FPJCC](#) [CX3225SB12000H0KFSCC](#)