

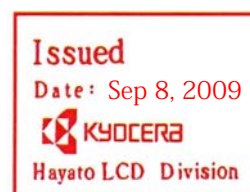
# SPEC

Spec No.	TQ3C-8EAF0-E1DDQ63-00
Date	September 1, 2009

**TYPE : TCG085WVLCB-G00**  
< 8.5 inch WVGA transmissive color TFT  
with LED backlight>

## CONTENTS

1. Application
2. Construction and outline
3. Mechanical specifications
4. Absolute maximum ratings
5. Electrical characteristics
6. Optical characteristics
7. Interface signals
8. Input timing characteristics
9. Backlight characteristics
10. Lot number identification
11. Warranty
12. Precautions for use
13. Reliability test data
14. Outline drawing



KYOCERA CORPORATION  
KAGOSHIMA HAYATO PLANT  
LCD DIVISION

This specification is subject to change without notice.  
Consult Kyocera before ordering.

Original Issue Date	Designed by: Engineering dept.			Confirmed by: QA dept.	
	Prepared	Checked	Approved	Checked	Approved
September 1, 2009	<i>Y. Ikeda</i>	<i>H. Tokumori</i>	<i>Y. Matsumoto</i>	<i>J. Sakaguchi</i>	<i>T. Ishii</i>

Spec No. TQ3C-8EAF0-E1DDQ63-00	Part No. TCG085WVLCB-G00	Page -
-----------------------------------	-----------------------------	-----------

## **Warning**

1. This Kyocera LCD module has been specifically designed for use only in electronic devices and industrial machines in the area of audio control, office automation, industrial control, home appliances, etc. The module should not be used in applications where the highest level of safety and reliability are required and module failure or malfunction of such module results in physical harm or loss of life, as well as enormous damage or loss. Such fields of applications include, without limitation, medical, aerospace, communications infrastructure, atomic energy control. Kyocera expressly disclaims any and all liability resulting in any way to the use of the module in such applications.
2. Customer agrees to indemnify, defend and hold Kyocera harmless from and against any and all actions, claims, damages, liabilities, awards, costs, and expenses, including legal expenses, resulting from or arising out of Customer's use, or sale for use, or Kyocera modules in applications.

## **Caution**

1. Kyocera shall have the right, which Customer hereby acknowledges, to immediately scrap or destroy tooling for Kyocera modules for which no Purchase Orders have been received from the Customer in a two-year period.

Spec No. TQ3C-8EAF0-E1DDQ63-00	Part No. TCG085WVLCB-G00	Page -
-----------------------------------	-----------------------------	-----------

### Revision record

Date		Designed by : Engineering dept.			Confirmed by : QA dept.	
		Prepared	Checked	Approved	Checked	Approved
Rev.No.	Date	Page	Descriptions			

## 1. Application

This document defines the specification of TCG085WVLCB-G00. (RoHS Compliant)

## 2. Construction and outline

LCD	: Transmissive color dot matrix type TFT
Backlight system	: LED
Polarizer	: Glare treatment
Additional circuit	: Timing controller, Power supply (3.3V input) (without constant current circuit for LED Backlight)

## 3. Mechanical specifications

Item	Specification	Unit
Outline dimensions 1)	210(W)×134(H)×8.5(D)	mm
Active area	184.8(W)×110.88(H) (21.6cm/8.5 inch(Diagonal))	mm
Effective viewing area	186.8(W)×112.9(H)	mm
Dot format	800×(B,G,R)(W)×480(H)	dot
Dot pitch	0.077(W)×0.231(H)	mm
Base color 2)	Normally White	-
Mass	(TBD)	g

1) Projection not included. Please refer to outline for details.

2) Due to the characteristics of the LCD material, the color varies with environmental temperature.

## 4. Absolute maximum ratings

### 4-1. Electrical absolute maximum ratings

Item	Symbol	Min.	Max.	Unit
Supply voltage	V <sub>DD</sub>	-0.3	4.5	V
Input signal voltage 1)	V <sub>IN</sub>	-0.3	4.5	V
LED forward current 2)	I <sub>F</sub>	-	(100)	mA

- 1) Input signal : CK, R0 ~ R5, G0 ~ G5, B0 ~ B5, H<sub>SYNC</sub>, V<sub>SYNC</sub>, ENAB, CM, SC  
 2) For each “AN-CA”

### 4-2. Environmental absolute maximum ratings

Item	Symbol	Min.	Max.	Unit
Operating temperature 1)	T <sub>OP</sub>	-20	70	°C
Storage temperature 2)	T <sub>STO</sub>	-30	80	°C
Operating humidity 3)	H <sub>OP</sub>	10	4)	%RH
Storage humidity 3)	H <sub>STO</sub>	10	4)	%RH
Vibration	-	5)	5)	-
Shock	-	6)	6)	-

- 1) Operating temperature means a temperature which operation shall be guaranteed. Since display performance is evaluated at 25°C, another temperature range should be confirmed.  
 2) Temp. = -30°C < 48h , Temp. = 80°C < 168h  
 Store LCD at normal temperature/humidity. Keep them free from vibration and shock.  
 An LCD that is kept at a low or a high temperature for a long time can be defective due to other conditions, even if the low or high temperature satisfies the standard.  
 (Please refer to “Precautions for Use” for details.)

- 3) Non-condensing

- 4) Temp. 40°C, 85%RH Max.

Temp. > 40°C, Absolute humidity shall be less than 85%RH at 40°C.

- 5)

Frequency	10 ~ 55 Hz	Acceleration value (0.3 ~ 9 m/s <sup>2</sup> )
Vibration width	0.15mm	
Interval	10-55-10 Hz	1 minutes

2 hours in each direction X, Y, Z (6 hours total)

EIAJ ED-2531

- 6) Acceleration: 490 m/s<sup>2</sup>, Pulse width: 11 ms

3 times in each direction: ±X, ±Y, ±Z

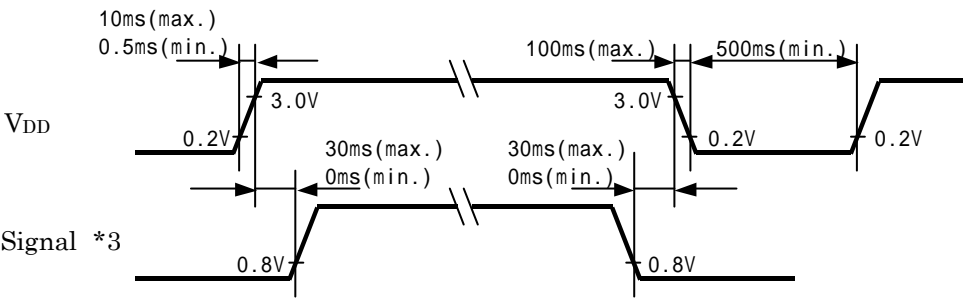
EIAJ ED-2531

5. Electrical characteristics

Temp. = -20 ~ 70°C

Item	Symbol	Condition	Min.	Typ.	Max.	Unit
Supply voltage 1)	V <sub>DD</sub>	-	3.0	3.3	3.6	V
Current consumption	I <sub>DD</sub>	2)	-	(260)	(340)	mA
Permissive input ripple voltage	V <sub>RP</sub>	-	-	-	100	mVp-p
Input signal voltage 3)	V <sub>IL</sub>	"Low" level	0	-	0.8	V
	V <sub>IH</sub>	"High" level	2.0	-	V <sub>DD</sub>	V

1) V<sub>DD</sub>-turn-on conditions



2) Display pattern:

V<sub>DD</sub> = 3.3V, Temp. = 25°C

123 456    • • • • •    • 2398 2399 2400(dot)

1

2

3

:

:

:

479

480

(dot)

3) Input signal : CK, R0 ~ R5, G0 ~ G5, B0 ~ B5, H<sub>SYNC</sub>, V<sub>SYNC</sub>, ENAB, CM, SC

## 6. Optical characteristics

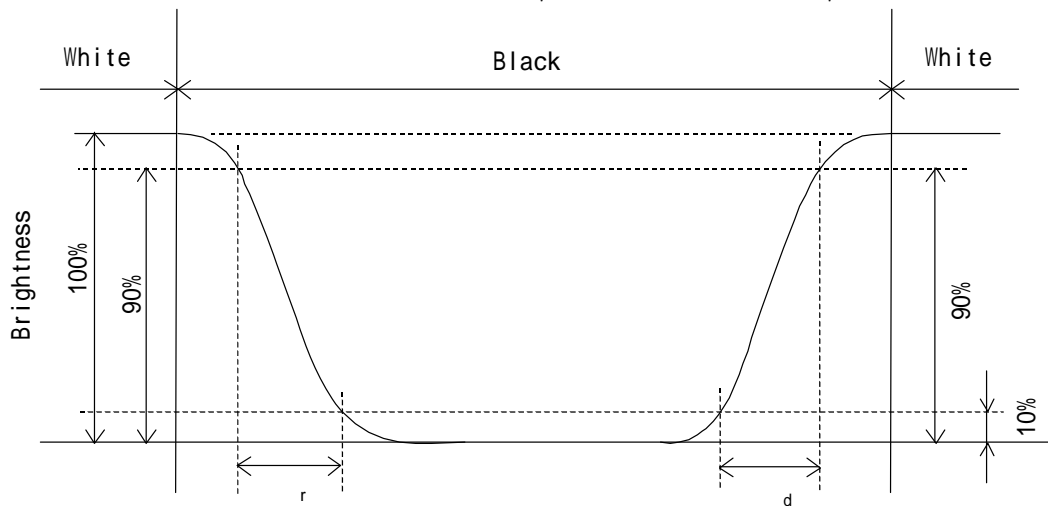
Measuring spot = 6.0mm, Temp. = 25°C

Item		Symbol	Condition	Min.	Typ.	Max.	Unit
Response time	Rise	$\tau_r$	= 0°	-	15	-	ms
	Down	$\tau_d$	= 0°	-	35	-	ms
Viewing angle range View direction : 12 o'clock (Gray inversion)		UPPER	CR 5	-	60	-	deg.
		LOWER		-	45	-	
		LEFT		-	60	-	deg.
		$\phi$ RIGHT		-	60	-	
Contrast ratio		CR	= 0°	300	500	-	-
Brightness		L	IF=60mA/Line	(280)	(400)	-	cd/m <sup>2</sup>
Luminance(Brightness)		LU	-	(70)	-	-	%
Chromaticity coordinates	Red	x	= 0°	(TBD)	(TBD)	(TBD)	-
		y		(TBD)	(TBD)	(TBD)	
	Green	x	= 0°	(TBD)	(TBD)	(TBD)	
		y		(TBD)	(TBD)	(TBD)	
	Blue	x	= 0°	(TBD)	(TBD)	(TBD)	
		y		(TBD)	(TBD)	(TBD)	
	White	x	= 0°	(TBD)	(TBD)	(TBD)	
		y		(TBD)	(TBD)	(TBD)	

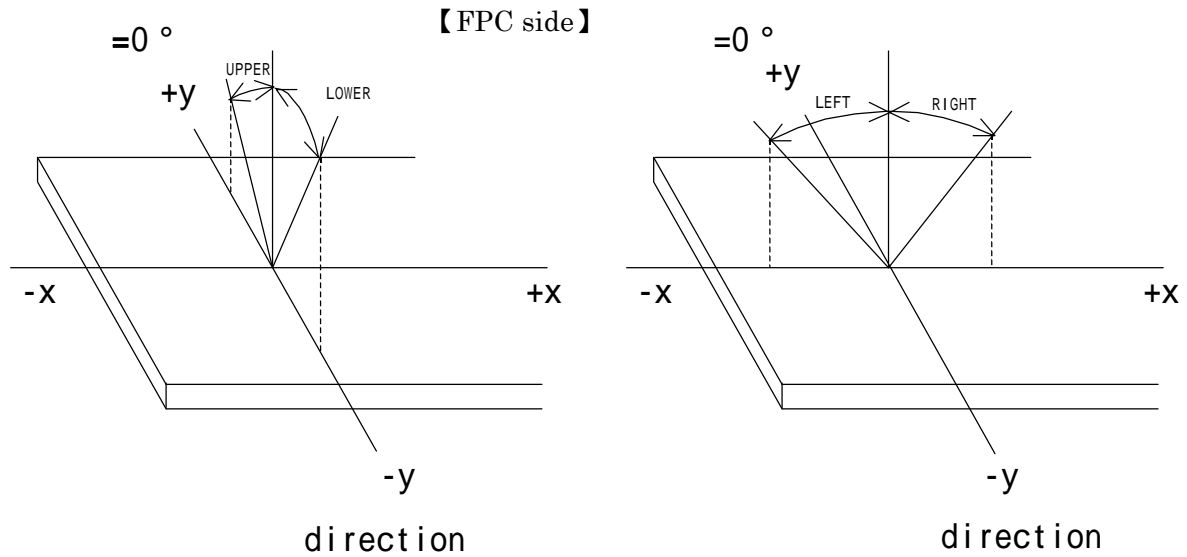
### 6-1. Definition of contrast ratio

$$\text{CR(Contrast ratio)} = \frac{\text{Brightness with all pixels "White"}}{\text{Brightness with all pixels "Black"}}$$

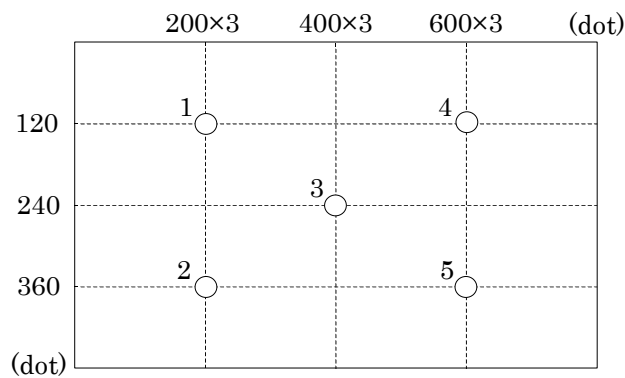
### 6-2. Definition of response time



### 6-3. Definition of viewing angle



### 6-4. Brightness measuring points



- 1) Rating is defined as the white brightness at center of display screen(3).
- 2) The brightness uniformity is calculated by using following formula.

$$\text{Brightness uniformity} = \frac{\text{Minimum brightness from 1 to 5}}{\text{Maximum brightness from 1 to 5}} \times 100 [\%]$$

- 3) 30 minutes after CFL is turned on. (Ambient Temp.=25 )



## 7. Interface signals

### 7-1. LCD

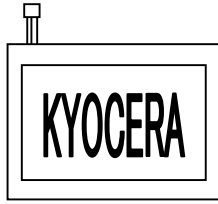
No.	Symbol	Description	Level
1	V <sub>DD</sub>	3.3V power supply	
2	V <sub>DD</sub>	3.3V power supply	
3	V <sub>DD</sub>	3.3V power supply	
4	V <sub>DD</sub>	3.3V power supply	
5	CM	Mode select signal(High or Open: Necessity of V <sub>H SYNC</sub> , GND: Unnecessity of V <sub>H SYNC</sub> )	
6	ENAB	Data Enable (positive)	
7	GND	GND	
8	V <sub>SYNC</sub>	Vertical synchronous signal (negative)(fix low or high: when CM fixed to GND)	
9	GND	GND	
10	H <sub>SYNC</sub>	Horizontal synchronous signal (negative) (fix low or high: when CM fixed to GND)	
11	GND	GND	
12	B5	BLUE data signal (MSB)	
13	B4	BLUE data signal	
14	B3	BLUE data signal	
15	GND	GND	
16	B2	BLUE data signal	
17	B1	BLUE data signal	
18	B0	BLUE data signal (LSB)	
19	GND	GND	
20	G5	GREEN data signal (MSB)	
21	G4	GREEN data signal	
22	G3	GREEN data signal	
23	GND	GND	
24	G2	GREEN data signal	
25	G1	GREEN data signal	
26	G0	GREEN data signal (LSB)	
27	GND	GND	
28	R5	RED data signal (MSB)	
29	R4	RED data signal	
30	R3	RED data signal	
31	GND	GND	
32	R2	RED data signal	
33	R1	RED data signal	
34	R0	RED data signal (LSB)	
35	SC	Scan direction control(GND or Open: Normal, High: Reverse)	
36	GND	GND	
37	GND	GND	
38	CK	Sampling clock	
39	GND	GND	
40	GND	GND	

LCD connector : FH33-40S-0.5SH(10) (HIROSE)

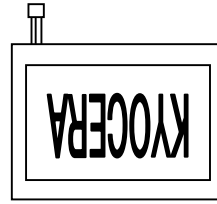
Recommended matching FFC or FPC : 0.5mm pitch

## 1) Scanning

SC : GND or Open



SC : High



## 7-2 . LED

No.	Symbol	Description
1	AN1	Anode 1
2	AN2	Anode 2
4	CA1	Cathode 1
5	CA2	Cathode 2

LCD side connector(CN2) : PHR-4 (JST)

Recommended matching connector

: B4B-PH-SM4-TB (JST)  
 : B4B-PH-SM4-TB(LF)(SN) (JST)・・・(RoHS Compliant)  
 : S4B-PH-SM4-TB (JST)  
 : S4B-PH-SM4-TB(LF)(SN) (JST)・・・(R o H S 対応品)

## 8. Input timing characteristics

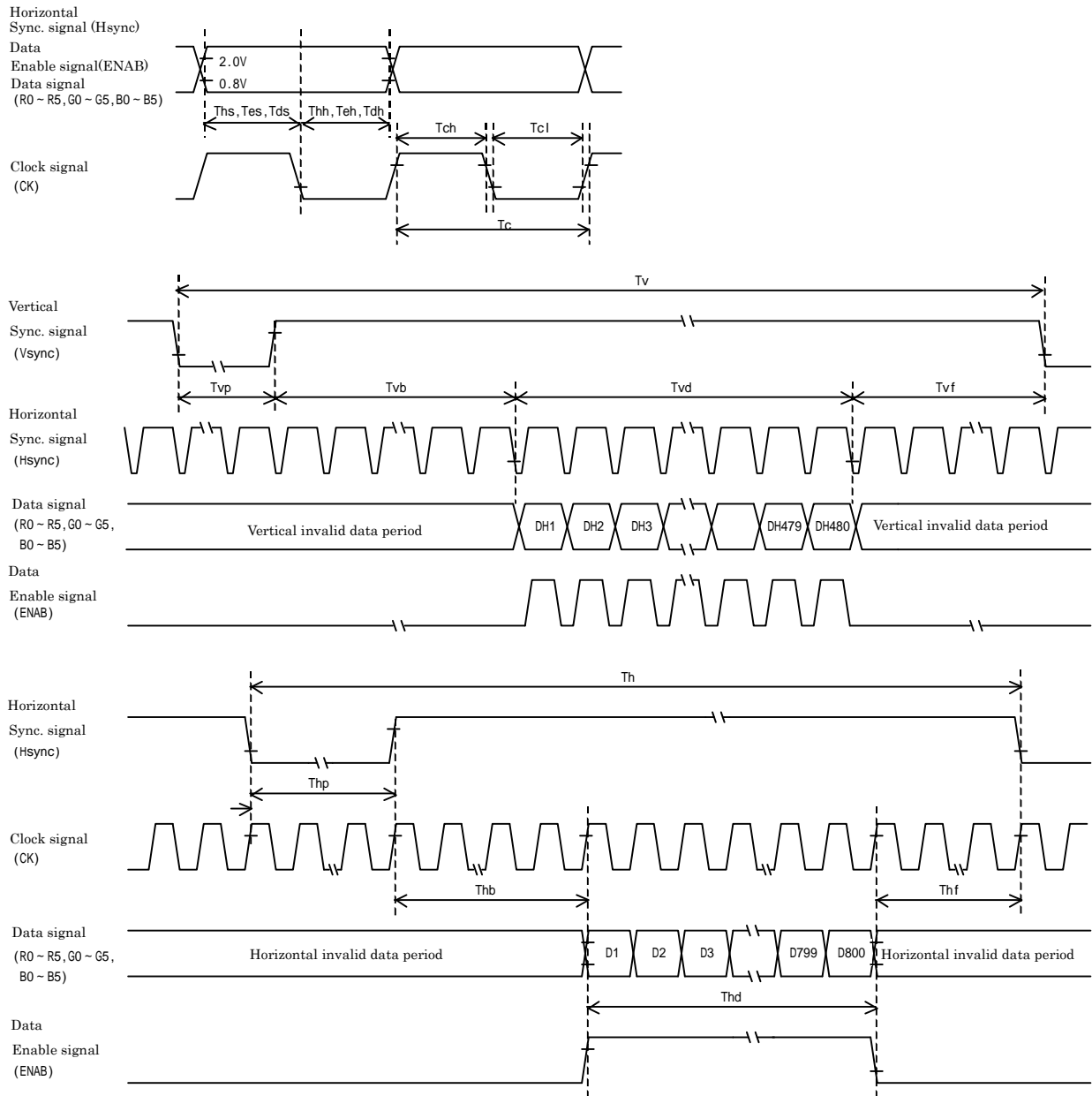
### 8-1. CM : High or Open ( Necessity of V<sub>H SYNC</sub> )

#### 8-1-1. Timing characteristics

Item		Symbol	Min.	Typ.	Max.	Unit	Note
Clock	Frequency	Fck	29.88	33.2	36.52	MHz	
	Period	Tc	27.4	30.1	33.5	ns	
	High time	Tch	12	-	-	ns	
	Low time	Tcl	12	-	-	ns	
Data	Set up time	Tds	5	-	-	ns	
	Hold time	Tdh	10	-	-	ns	
Data Enable	Set up time	Tes	5	-	-	ns	
	Hold time	Teh	10	-	-	ns	
Horizontal sync. signal	Set up time	Ths	5	-	-	ns	
	Hold time	Thh	10	-	-	ns	
	Period	Th	944	1056	1088	Tc	
			-	31.8	-	μs	
	Pulse width	Thp	4	128	-	Tc	
	Front porch	Thf	-	40	-	Tc	
	Back porch	Thb	7	88	-	Tc	
Horizontal display period		Thd	800			Tc	
Vertical sync. signal	Period	Tv	516	525	534	Th	
			14.7	16.6	17.4	ms	
	Pulse width	Tvp	1	2	-	Th	
	Front porch	Tvf	-	11	-	Th	
	Back porch	Tvb	4	32	-	Th	
Vertical display period		Tvd	480			Th	

- 1) In case of lower frequency, the deterioration of the display quality, flicker etc., may occur.
- 2) If CK is fixed to "H" or "L" level for certain period while ENAB is supplied, the panel may be damaged.
- 3) When dimming LED by PWM, please adjust LCD operating signal timing and LED driving frequency, to optimize the display quality. There is a possibility that flicker is observed by the interference of LCD operating signal timing and LED driving condition (especially driving frequency), even if the condition satisfies above timing specification.
- 4) Do not make Tv, Th, and Thp fluctuate.
- 5) CK count of each Horizontal Scanning Time should be always the same.  
Vertical invalid data period should be "n" X "Horizontal Scanning Time" . (n: integer)  
Frame period should be always the same.

## 8-1-2. Input timing characteristics



8-2 . CM : GND ( Uunecessity of V• H<sub>SYNC</sub> )

## 8-2-1. Timing characteristics

	Item	Symbol	Min.	Typ.	Max.	Unit
DCLK	Frequency	fCLK	29.88	33.2	36.52	MHz
	Width_low	tWCL	10	-	-	ns
	Width_High	tWCH	10	-	-	ns
Hsync	Period	tHP	1024	1056	1088	tCLK
	Width_Active	tWH	8	64	96	tCLK
	Rise/Fall time	tHr,tHf	-	-	30	ns
Vsync	Period	tVP	487	525	550	tHP
	Width_Active	tWV	1	3	5	tHP
	Rise/Fall time	tVr,tVf	-	-	50	ns
DE	Setup Time	tSI	5	-	-	ns
	Hold Time	tHI	5	-	-	ns
	Rise/Fall time	tIr,tIf	-	-	30	ns
	Horizontal Display Period	tHDP	800	800	800	Clocks
	Vertical Display Period	tVDP	480	480	480	Lines
	Horizontal Back Porch	tHBP	8	128	128	tCLK
	Horizontal Front Porch	tHFP	8	64	64	tCLK
	Vertical Back Porch	tVBP	5	22	35	tHP
	Vertical Front Porch	tVFP	1	20	30	tHP
DATA	Setup Time	tSD	5	-	-	ns
	Hold Time	tHD	5	-	-	ns
	Rise/Fall Time	tDr,tDf	-	-	25	ns

- 1) In case of lower frequency, the deterioration of the display quality, flicker etc., may occur.
- 2) When dimming LED by PWM, please adjust LCD operating signal timing and LED driving frequency, to optimize the display quality. There is a possibility that flicker is observed by the interference of LCD operating signal timing and LED driving condition (especially driving frequency), even if the condition satisfies above timing specification.
- 3) In case of using the long frame period, the deterioration of display quality, noise etc. may be occurred.



## 9. Backlight characteristics

Item	Symbol	Min.	Typ.	Max.	Unit	Note
Forward current 1)	IF	-	60	-	mA	Ta=-20 ~ 70°C
Forward voltage 1)	VF	-	(18.9)	(22.1)	V	IF=60mA, Ta=-20
		-	(18.0)	(21.2)	V	IF=60mA, Ta=25
		-	(17.5)	(20.6)	V	IF=60mA, Ta=70
Operating life time 2), 3)	T	-	(50,000)	-	h	IF=60mA, Ta=25

- 1) For each "AN-CA"
- 2) When brightness decrease 50% of minimum brightness.  
The average life of a CFL will decrease when the LCD is operating at higher temperatures.
- 3) Life time is estimated data.(Condition : IF=60mA, Ta=25 in chamber).
- 4) An input current below (15)mA may reduce the brightness uniformity of the LED backlight.  
This is because the amount of light from each LED chip is different. Therefore, please evaluate carefully before finalizing the input current.

## 10. Lot number identification

The lot number shall be indicated on the back of the backlight case of each LCD.

TCG085WVLCB-G00 - □□ - □□ - □ MADE IN □□□□□  
 ↓ ↓ ↓ ↓ ↓  
 1 2 3 4 5

No1. - No5. above indicate 1. Year code 2. Month code 3. Date 4. Version Number 5. Country of origin (Japan or China)
--

Year	2009	2010	2011	2012	2013	2014
Code	9	0	1	2	3	4

Month	Jan.	Feb.	Mar.	Apr.	May	Jun.
Code	1	2	3	4	5	6

Month	Jul.	Aug.	Sep.	Oct.	Nov.	Dec.
Code	7	8	9	X	Y	Z

## 11. Warranty

### 11-1. Incoming inspection

Please inspect the LCD within one month after your receipt.

### 11-2. Production warranty

Kyocera warrants its LCD's for a period of 12 months from the ship date. Kyocera shall, by mutual agreement, replace or re-work defective LCD's that are shown to be Kyocera's responsibility.



## 12. Precautions for use

### 12-1. Installation of the LCD

- 1) Please ground either of the mounting(screw) holes located at each corner of an LCD module, in order to stabilize brightness and display quality.
- 2) A transparent protection plate shall be added to protect the LCD and its polarizer.
- 3) The LCD shall be installed so that there is no pressure on the LSI chips.
- 4) The LCD shall be installed flat, without twisting or bending.
- 5) Please design the housing window so that its edges are between the active area and the effective area of the LCD screen.
- 6) A transparent protection sheet is attached to the polarizer. Please remove the protection film slowly before use, paying attention to static electricity.

### 12-2. Static electricity

- 1) Since CMOS ICs are mounted directly onto the LCD glass, protection from static electricity is required.
- 2) Workers should use body grounding. Operator should wear ground straps.

### 12-3. LCD operation

- 1) The LCD shall be operated within the limits specified. Operation at values outside of these limits may shorten life, and/or harm display images.

### 12-4. Storage

- 1) The LCD shall be stored within the temperature and humidity limits specified.  
Store in a dark area, and protect the LCD from direct sunlight or fluorescent light.
- 2) Always store the LCD so that it is free from external pressure onto it.

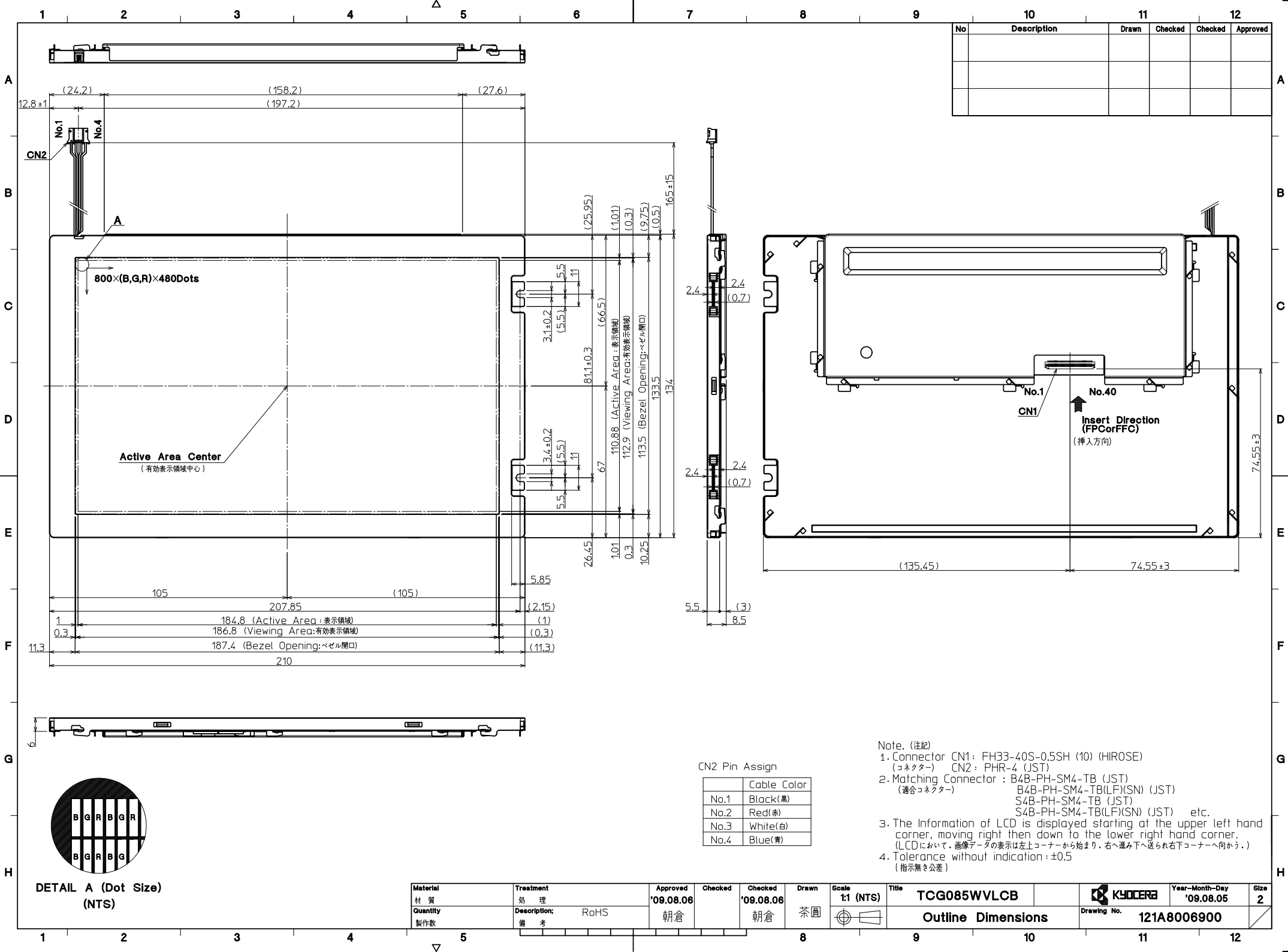
### 12-5. Usage

- 1) **DO NOT** store in a high humidity environment for extended periods. Polarizer degradation bubbles, and/or peeling off of the polarizer may result.
- 2) The front polarizer is easily scratched or damaged. Prevent touching it with any hard material, and from being pushed or rubbed.
- 3) The LCD screen may be cleaned by wiping the screen surface with a soft cloth or cotton pad using a little Ethanol.
- 4) Water may cause damage or discoloration of the polarizer. Clean condensation or moisture from any source immediately.
- 5) Always keep the LCD free from condensation during testing. Condensation may permanently spot or stain the polarizer.
- 6) Do not pull the LED lead wires and do not bend the root of the wires. Housing should be designed to protect LED lead wires from external stress.
- 7) Do not disassemble LCD because it will result in damage.
- 8) This Kyocera LCD has been specifically designed for use in general electronic devices, but not for use in a special environment such as usage in an active gas. Hence, when the LCD is supposed to be used in a special environment, evaluate the LCD thoroughly beforehand and do not expose the LCD to chemicals such as an active gas.
- 9) Please do not use solid-base image pattern for long hours because a temporary afterimage may appear. We recommend using screen saver etc. in cases where a solid-base image pattern must be used.
- 10) Liquid crystal may leak when the LCD is broken. Be careful not to let the fluid go into your eyes and mouth. In the case the fluid touches your body; rinse it off right away with water and soap.

### 13. Reliability test data

Test item	Test condition	Test time	Judgement
High temp. atmosphere	80°C	240h	Display function : No defect Display quality : No defect Current consumption : No defect
Low temp. atmosphere	-30°C	240h	Display function : No defect Display quality : No defect Current consumption : No defect
High temp. humidity atmosphere	40°C 90% RH	240h	Display function : No defect Display quality : No defect Current consumption : No defect
Temp. cycle	-30°C 0.5h R.T. 0.5h 80°C 0.5h	10cycles	Display function : No defect Display quality : No defect Current consumption : No defect
High temp. operation	70°C	500h	Display function : No defect Display quality : No defect Current consumption : No defect

- 1) Each test item uses a test LCD only once. The tested LCD is not used in any other tests.
- 2) The LCD is tested in circumstances in which there is no condensation.
- 3) The reliability test is not an out-going inspection.
- 4) The result of the reliability test is for your reference purpose only.  
The reliability test is conducted only to examine the LCD's capability.



Spec No.	TQ3C-8EAF0-E2DDQ61-00
Date	September 1, 2009

## **KYOCERA INSPECTION STANDARD**

**TYPE : TCG085WVLCB-G00**

KYOCERA CORPORATION  
KAGOSHIMA HAYATO PLANT  
LCD DIVISION

Original Issue Date	Designed by : Engineering dept.			Confirmed by : QA dept.	
	Prepared	Checked	Approved	Checked	Approved
September 1, 2009	<i>Y. Ikeda</i>	<i>H. Tokumaru</i>	<i>G. Matsumoto</i>	<i>J. Sakaguchi</i>	<i>So. Ishi</i>

Spec No.

TQ3C-8EAF0-E2DDQ61-00

Part No.

TCG085WVLCB-G00

Page

-

**Revision record**

Date		Designed by : Engineering dept.			Confirmed by : QA dept.	
		Prepared	Checked	Approved	Checked	Approved
Rev.No.	Date	Page	Descriptions			

## Visuals specification

### 1) Note

	Note		
General	<div>1. Customer identified anomalies not defined within this inspection standard shall be reviewed by Kyocera, and an additional standard shall be determined by mutual consent.</div> <div>2. This inspection standard about the image quality shall be applied to any defect within the effective viewing area and shall not be applicable to outside of the area.</div> <div>3. Inspection conditions<div>Luminance : 500 Lux min.</div><div>Inspection distance : 300 mm.</div><div>Temperature : 25 ± 5</div><div>Direction : Directly above</div></div>		
Definition of inspection item	Dot defect	Bright dot defect	<div>The dot is constantly “on” when power applied to the LCD, even when all “Black” data sent to the screen.</div> <div>Inspection tool: 5% Transparency neutral density filter.</div> <div>Count dot: If the dot is visible through the filter.</div> <div>Don't count dot: If the dot is not visible through the filter.</div> <div><div><div><div>R</div><div>G</div><div>B</div><div>R</div><div>G</div><div>B</div><div>R</div><div>G</div><div>B</div></div><div><div>R</div><div>G</div><div>B</div><div>R</div><div>G</div><div>B</div><div>R</div><div>G</div><div>B</div></div><div><div>R</div><div>G</div><div>B</div><div>R</div><div>G</div><div>B</div><div>R</div><div>G</div><div>B</div></div></div><div><div>dot defect</div></div></div>
		Black dot defect	The dot is constantly “off” when power applied to the LCD, even when all “White” data sent to the screen.
		Adjacent dot	<div>Adjacent dot defect is defined as two or more bright dot defects or black dot defects.</div> <div><div><div><div>R</div><div>G</div><div>B</div><div>R</div><div>G</div><div>B</div><div>R</div><div>G</div><div>B</div></div><div><div>R</div><div>G</div><div>B</div><div>R</div><div>G</div><div>B</div><div>R</div><div>G</div><div>B</div></div><div><div>R</div><div>G</div><div>B</div><div>R</div><div>G</div><div>B</div><div>R</div><div>G</div><div>B</div></div></div><div><div>dot defect</div></div></div>
	External inspection	Bubble, Scratch, Foreign particle (Polarizer, Cell, Backlight)	Visible operating (all pixels “Black” or “White”) and non operating.
		Appearance inspection	Does not satisfy the value at the spec.
	Others	LED wires	Damaged to the LED wires, connector, pin, functional failure or appearance failure.
Definition of size	<div><div>Definition of circle size</div><div><div><div><div><div></div></div></div><div><div><div></div></div></div></div><div><div>a</div><div>b</div></div><div><div>d = ( a + b ) / 2</div></div></div><div><div>Definition of linear size</div><div><div><div><div></div></div><div><div></div></div></div><div><div>L</div><div>W</div></div></div></div></div>		

## 2) Standard

Classification		Inspection item		Judgement standard																											
Defect (in LCD glass)	Dot defect	Bright dot defect		Acceptable number		: 4																									
				Bright dot spacing		: 5 mm or more																									
		Black dot defect		Acceptable number		: 5																									
				Black dot spacing		: 5 mm or more																									
		2 dot join	Bright dot defect	Acceptable number		: 2																									
			Black dot defect	Acceptable number		: 3																									
	3 or more dots join		Acceptable number		: 0																										
	Total dot defects		Acceptable number		: 5 Max																										
	Others	White dot, Dark dot (Circle)	<table><tr><th colspan="2">Size (mm)</th><th>Acceptable number</th></tr><tr><td>d</td><td>0.2</td><td>(Neglected)</td></tr><tr><td>0.2 &lt; d</td><td>0.4</td><td>5</td></tr><tr><td>0.4 &lt; d</td><td>0.5</td><td>3</td></tr><tr><td>0.5 &lt; d</td><td></td><td>0</td></tr></table>				Size (mm)		Acceptable number	d	0.2	(Neglected)	0.2 < d	0.4	5	0.4 < d	0.5	3	0.5 < d		0										
Size (mm)		Acceptable number																													
d	0.2	(Neglected)																													
0.2 < d	0.4	5																													
0.4 < d	0.5	3																													
0.5 < d		0																													
External inspection (Defect on Polarizer or between Polarizer and LCD glass)		Polarizer (Scratch)		<table><tr><th colspan="2">Width (mm)</th><th colspan="2">Length (mm)</th><th>Acceptable number</th></tr><tr><td>W</td><td>0.1</td><td colspan="2">-</td><td>(Neglected)</td></tr><tr><td rowspan="2">0.1 &lt; W</td><td rowspan="2">0.3</td><td>L</td><td>5.0</td><td>(Neglected)</td></tr><tr><td colspan="2">5.0 &lt; L</td><td>0</td></tr><tr><td colspan="2">0.3 &lt; W</td><td colspan="2">-</td><td>0</td></tr></table>				Width (mm)		Length (mm)		Acceptable number	W	0.1	-		(Neglected)	0.1 < W	0.3	L	5.0	(Neglected)	5.0 < L		0	0.3 < W		-		0	
				Width (mm)		Length (mm)		Acceptable number																							
				W	0.1	-		(Neglected)																							
				0.1 < W	0.3	L	5.0	(Neglected)																							
						5.0 < L		0																							
		0.3 < W		-		0																									
		Polarizer (Bubble)		<table><tr><th colspan="2">Size (mm)</th><th>Acceptable number</th></tr><tr><td>d</td><td>0.2</td><td>(Neglected)</td></tr><tr><td>0.2 &lt; d</td><td>0.3</td><td>5</td></tr><tr><td>0.3 &lt; d</td><td>0.5</td><td>3</td></tr><tr><td>0.5 &lt; d</td><td></td><td>0</td></tr></table>				Size (mm)		Acceptable number	d	0.2	(Neglected)	0.2 < d	0.3	5	0.3 < d	0.5	3	0.5 < d		0									
				Size (mm)		Acceptable number																									
				d	0.2	(Neglected)																									
				0.2 < d	0.3	5																									
				0.3 < d	0.5	3																									
		0.5 < d		0																											
		Foreign particle ( Circular shape )		<table><tr><th colspan="2">Size (mm)</th><th>Acceptable number</th></tr><tr><td>d</td><td>0.2</td><td>(Neglected)</td></tr><tr><td>0.2 &lt; d</td><td>0.4</td><td>5</td></tr><tr><td>0.4 &lt; d</td><td>0.5</td><td>3</td></tr><tr><td>0.5 &lt; d</td><td></td><td>0</td></tr></table>				Size (mm)		Acceptable number	d	0.2	(Neglected)	0.2 < d	0.4	5	0.4 < d	0.5	3	0.5 < d		0									
				Size (mm)		Acceptable number																									
				d	0.2	(Neglected)																									
				0.2 < d	0.4	5																									
0.4 < d	0.5			3																											
0.5 < d		0																													
Foreign particle ( Linear shape ) Scratch		<table><tr><th colspan="2">Width (mm)</th><th colspan="2">Length (mm)</th><th>Acceptable number</th></tr><tr><td>W</td><td>0.03</td><td colspan="2">-</td><td>(Neglected)</td></tr><tr><td rowspan="3">0.03 &lt; W</td><td rowspan="3">0.1</td><td>L</td><td>2.0</td><td>(Neglected)</td></tr><tr><td colspan="2">2.0 &lt; L 4.0</td><td>3</td></tr><tr><td colspan="2">4.0 &lt; L</td><td>0</td></tr><tr><td colspan="2">0.1 &lt; W</td><td colspan="2">-</td><td>(According to circular shape)</td></tr></table>				Width (mm)		Length (mm)		Acceptable number	W	0.03	-		(Neglected)	0.03 < W	0.1	L	2.0	(Neglected)	2.0 < L 4.0		3	4.0 < L		0	0.1 < W		-		(According to circular shape)
		Width (mm)		Length (mm)		Acceptable number																									
		W	0.03	-		(Neglected)																									
		0.03 < W	0.1	L	2.0	(Neglected)																									
				2.0 < L 4.0		3																									
				4.0 < L		0																									
		0.1 < W		-		(According to circular shape)																									

# Mouser Electronics

Authorized Distributor

Click to View Pricing, Inventory, Delivery & Lifecycle Information:

[Kyocera:](#)

[TCG085WVLCB-G00](#)