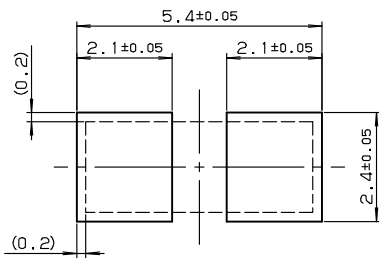


SERIES

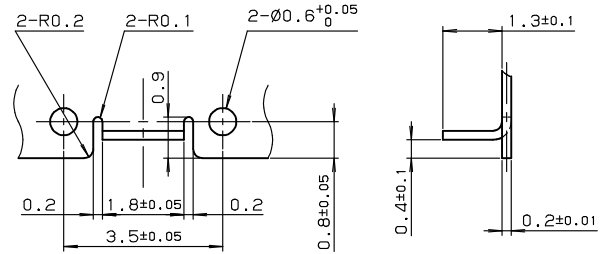
# 8069

シールドロック H=3.0mm

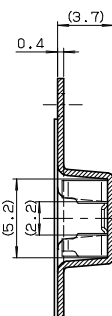
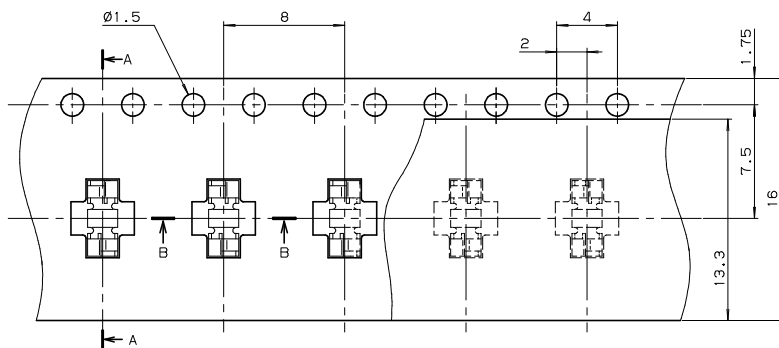
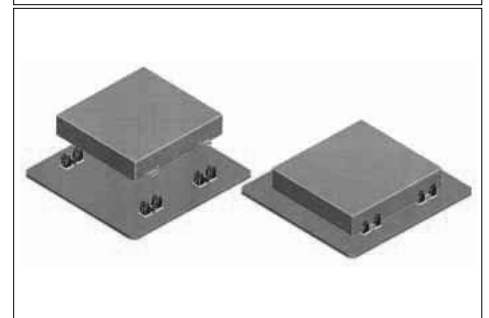
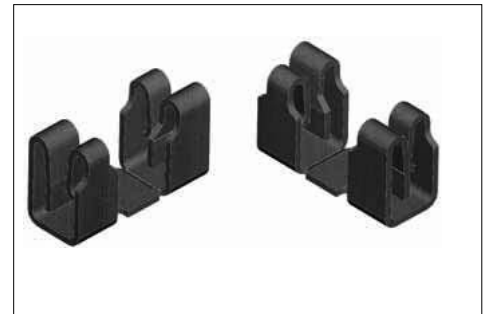
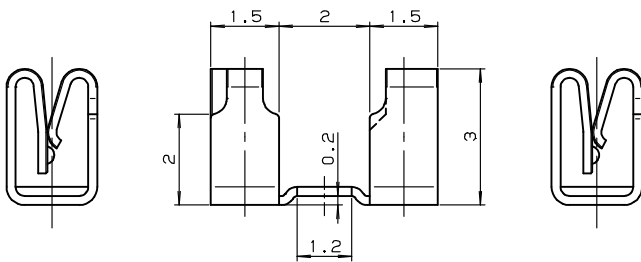
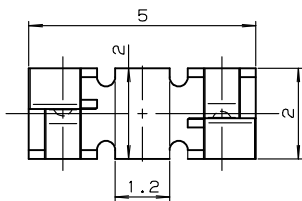
SHIELD LOCK



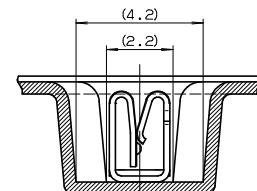
推奨パターンレイアウト  
RECOMMENDED PATTERN LAYOUT



シールドケース形状  
SHIELDING CASE FORM



SECT. A-A



SECT. B-B

注文コード / Ordering Code

Part No. 04 8069 000 000 800 +

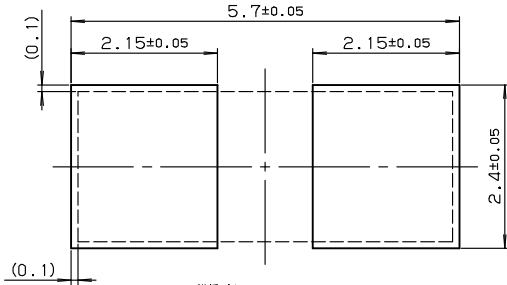
車載機器などの高い信頼性が求められる機器に本製品をご検討の場合は、弊社までお問い合わせください。  
If you use the product for equipment requiring high reliability such as automotive equipment, please contact us beforehand.

SERIES

# 8069

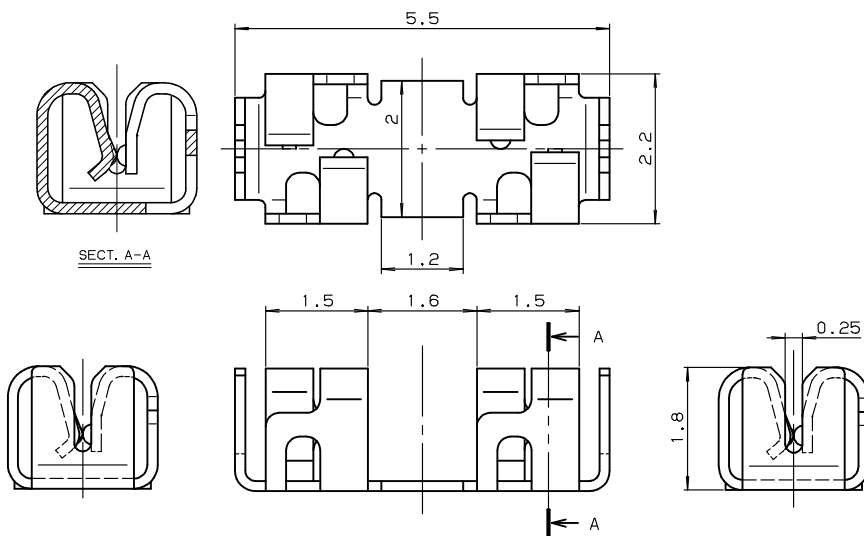
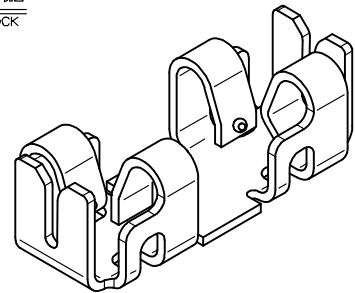
シールドロック H=1.8mm

SHIELD LOCK

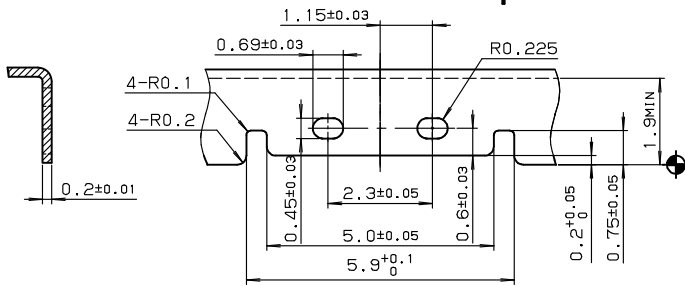
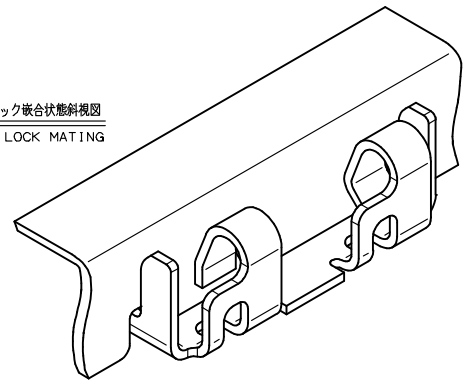


推奨パターンレイアウト  
RECOMMENDED PATTERN LAYOUT

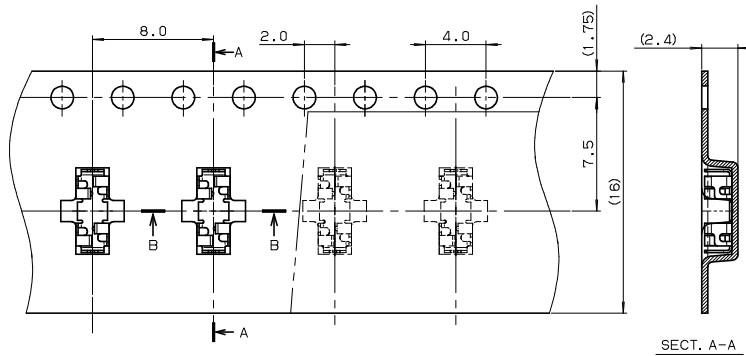
シールドロック斜視図  
SHIELD LOCK



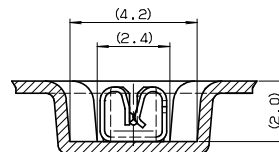
シールドロック嵌合状態斜視図  
SHIELD LOCK MATING



シールドケース形状  
SHIELDING CASE FORM



SECT. A-A



SECT. B-B

注文コード / Ordering Code

Part No. 04 8069 000 100 800 +



車載機器などの高い信頼性が求められる機器に本製品をご検討の場合は、弊社までお問い合わせください。  
If you use the product for equipment requiring high reliability such as automotive equipment, please contact us beforehand.

# Mouser Electronics

Authorized Distributor

Click to View Pricing, Inventory, Delivery & Lifecycle Information:

[Kyocera:](#)

[048069000000800+](#) [048069000100800+](#)