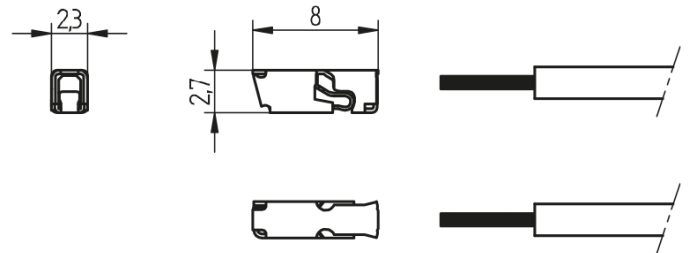
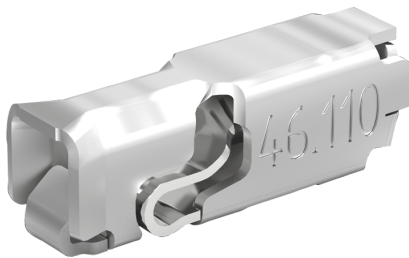
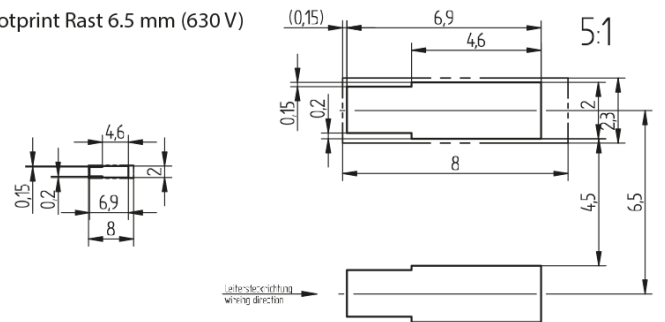


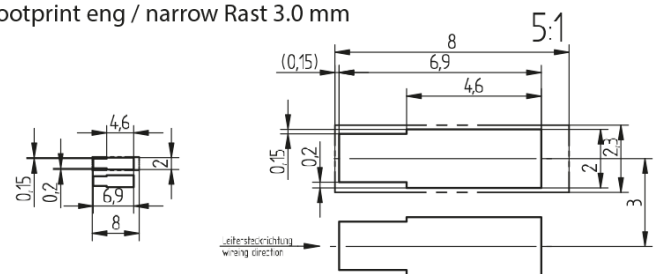
# SMD terminal block Pico with push wire contact and contact opening function without insulated housing, 1pole 46.110.1001.48



Footprint Rast 6.5 mm (630 V)

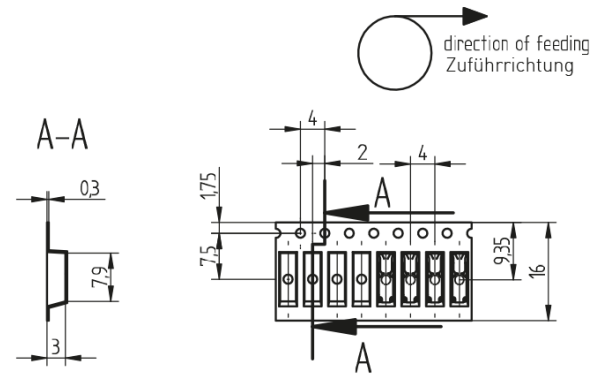


Footprint eng / narrow Rast 3.0 mm



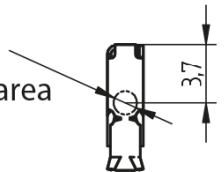
# SMD terminal block Pico with push wire contact and contact opening function without insulated housing, 1pole

## 46.110.1001.48



Empfohlene Maße für die  
„pick & place“ Fläche  $\varnothing$  1.5 mm

Recommended „pick & place“ area  
 $\varnothing$  1.5 mm



0.20 - 0.75mm<sup>2</sup>  
AWG 24 - 18

U<sub>imp</sub>  
4 kV

CAD



LED-OLINE



7.5 - 9.5 mm



0.20-0.50 mm<sup>2</sup> AWG  
24-20



0,20-0,75 mm<sup>2</sup> AWG  
24 -18

# SMD terminal block Pico with push wire contact and contact opening function without insulated housing, 1pole

## 46.110.1001.48



## DESCRIPTION

**Funnel-shaped wire insertion channel for easy wire insertion**

**Direct insertion of solid and stranded, tinned wire ends and finely stranded conductors by using the contact opening function**

**Contact opening function** - also for release of already inserted wires

**Mounting and wiring position: PCB top side**

**Machine-compatible "tape-and-reel" packaging**

Fixing: Lead-free reflow soldering according to DIN EN 610760-1, section 6

Note: Terminal without insulation housing! Protection against contact when using voltage > extra-low voltage (SELV, PELV) must be ensured in the application.

### Instructions for soldering process

Suitable for leadfree-reflow-profiles according to DIN EN 61760-1 respective DIN EN 60068-2-58 up to peak-temperature of max. 260°C. Due to different application-specific parameters (component arrangement and alignment, soldering system, solder paste), it is recommended to use test runs to determine a suitable profile under production conditions.

Depending on the SMD soldering process and associated parameters a minor discoloration might occur. However, this will not influence the functionality.

Product name:	SMD terminal block Pico with push wire contact and contact opening function without insulated housing, 1pole		
Mounting method 1:	Solder fixing		
Material:	Material: CrNi / CuSn, silver	Clamping spring material: CrNi	Contact material: CuSN Contact surface: hot-dipped tinned
Connection:	Plug-in contact		
cULus file no.:	E-365006		
Quantity of poles:	1		
Pkg.:	108000		