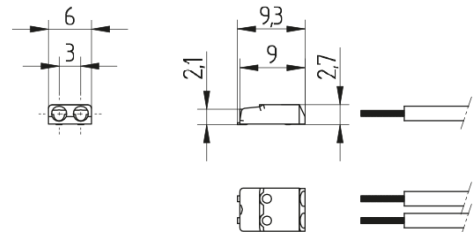


SMD-Terminal block - Nano with push wire contacts and contact opening function, 2 pole

46.142.1001.50

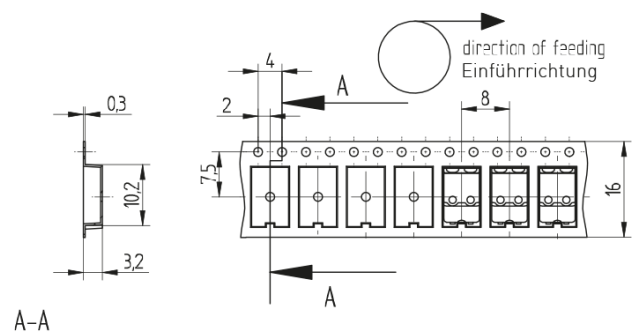
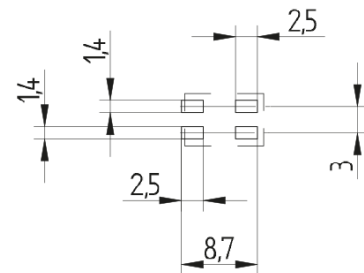


Generelle Empfehlung: Die beiden Lötflächen eines Klemmpoles auf der Platine sollten elektrisch miteinander verbunden werden.

General note: It is recommended to make an electrical connection between both poles of each polarity on the solder pad.

Empfohlene Maße für die Lötflächen

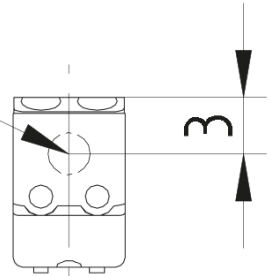
Recommended dimensions for solder tags



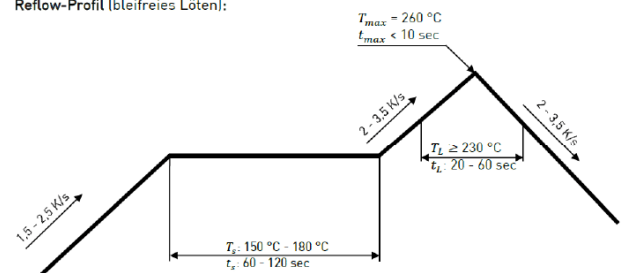
SMD-Terminal block - Nano with push wire contacts and contact opening function, 2 pole 46.142.1001.50



Empfohlene Maße für die
„pick & place Fläche ø 2.25 mm
Recommended „pick & place“
area ø 2.25 mm



Reflow-Profil (bleifreies Lötén):



7.0 +/- 0.5 mm



0.20-0.50 mm² AWG
24-20

SMD-Terminal block - Nano with push wire contacts and contact opening function, 2 pole

46.142.1001.50



DESCRIPTION

Direct insertion of solid wires

Contact opening function - for release of already inserted wires

Mounting and wiring position: PCB top side

Machine-compatible "tape-and-reel" packaging

Fixing: Lead-free reflow soldering according to DIN EN 610760-1, section 6

Note 1: Recommended dimensions for solder mask - Recommended thickness of solder 0.15 mm

Note 2: Recommended Pick and Place area

General note: It is recommended to make an electrical connection between both poles of each polarity on the solder mask

It is recommended to use our wire release tool 46.141.U801.89

Other packaging units on request

Product name:	SMD-Terminal block - Nano with push wire contacts and contact opening function, 2 pole
Country of origin:	DE
Packaging type:	Blister belt
Packaging quantity:	2800.000
Mounting method 1:	Solder fixing
Material:	Housing: PPA Contacts: Cu alloy
ENEC Rating:	3A / 320V
Approval:	zusätzlich cURus
cULus file no.:	E-365006
Quantity of poles:	2
Weight:	0,2
Pkg.:	50400