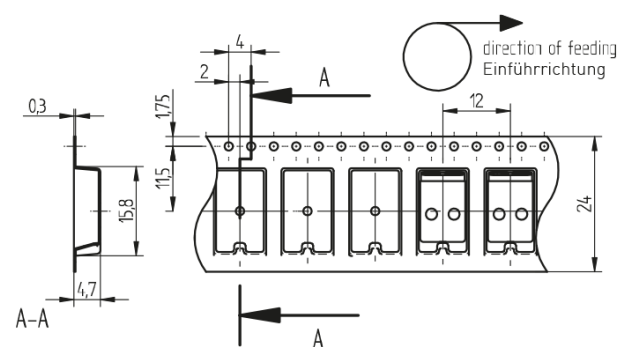
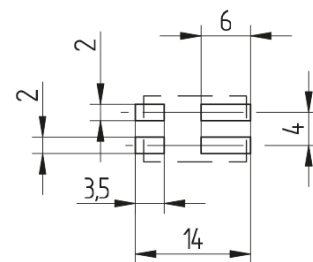


General note: It is recommended to make an electrical connection between both poles of each polarity on the solder pad.

Recommended dimensions for solder tags

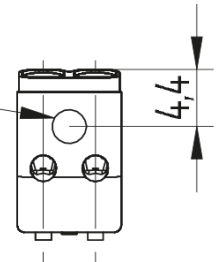


SMD-Terminal block - Mini-Flex with push wire contacts and contact opening function, 2 pole

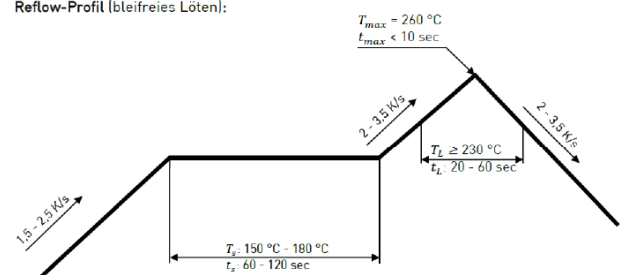
46.132.1001.50



Empfohlene Maße für die „pick & place Fläche“ $\varnothing 2.6 \text{ mm}$
Recommended „pick & place“ area $\varnothing 2.6 \text{ mm}$



Reflow-Profil (bleifreies Löten):



8.0 + 1 mm



0.20-0.75 mm² AWG
24-18



0.20-0.50 mm² AWG
24-20



0.20-0.75 mm² AWG
24-18

SMD-Terminal block - Mini-Flex with push wire contacts and contact opening function, 2 pole

46.132.1001.50



DESCRIPTION

Direct insertion of solid and stranded, tinned wire ends and finely stranded conductors by using the contact opening function

Contact opening function - also for release of already inserted wires

Mounting and wiring position: PCB top side

Machine-compatible "tape-and-reel" packaging

Fixing: Lead-free reflow soldering according to DIN EN 610760-1, section 6

Note 1: Recommended dimensions for solder mask - Recommended thickness of solder 0.15 mm

Note 2: Recommended Pick and Place area

General note: It is recommended to make an electrical connection between both poles of each polarity on the solder mask

It is recommended to use our wire release tool 46.131.U801.89 or 46.131.-398.50 by using fine-stranded wires

Other packaging units on request

Product name:	SMD-Terminal block - Mini-Flex with push wire contacts and contact opening function, 2 pole
Country of origin:	DE
Packaging type:	Blister belt
Packaging quantity:	1200.000
Mounting method 1:	Solder fixing
Material:	Housing: PPA Contacts: Cu alloy
ENEC Rating:	9A / 320V
[URus Rating]:	9A / 320V
Approval:	IEC 60947-7-4, additional cURus
cULus file no.:	E-365006
cUR Rating:	9A / 320V
Quantity of poles:	2
Weight:	0,4
Pkg.:	15600