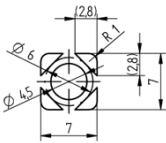
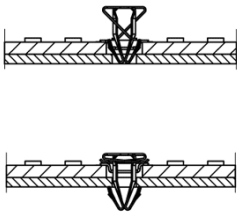
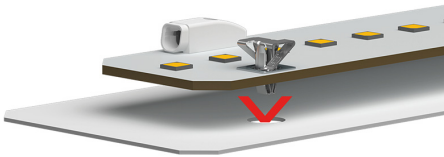
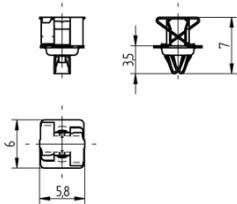
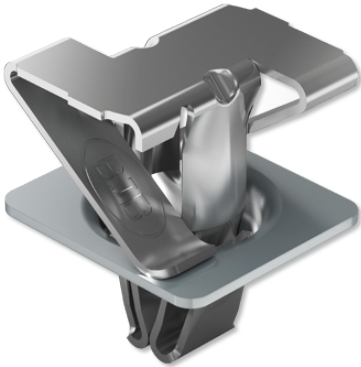


# SMD-P2F (Push-to-Fix) – solderable fixing element 28.904.U101.10



T 130

Tm 110

U out  
500 V



# SMD-P2F (Push-to-Fix) – solderable fixing element 28.904.U101.10

---



18 AWG 0,5 -1,0  
mm<sup>2</sup>



0,4 - 2,0



# SMD-P2F (Push-to-Fix) – solderable fixing element 28.904.U101.10



## DESCRIPTION

No additional screw-fixing assembly required  
Suitable for fixing PCBs in light fittings or aluminium profiles (see data sheet)  
Permanent, constant contact pressure with a minimum pressure force of 5 N  
Suitable for standardized hole patterns with  $\varnothing$  4.5 mm in the LED board  
For mounting plate cut-out  $\varnothing$  3.0 +0.2 mm  
Reliable heat dissipation due to constant contact pressure  
Suitable for manual and automatic final installation of PCBs  
Automated assembly solution on request  
Low-profile component prevents shadowing  
Alternative to screw fixing => no torque screwdriver required  
Quick installation process increases productivity and reduces production costs  
Tape and reel packaging  
Low insertion force prevents possible damage which may occur with screw fixing  
Releasable connection

Product name:	SMD-P2F (Push-to-Fix) – solderable fixing element
Country of origin:	DE
Packaging type:	Blister belt
Packaging quantity:	700.000
Short description:	For simplified final installation of LED boards by means of pre-attached P2F
Mounting method 1:	Push-in fixing for mounting PCBs
Total thickness (X):	1.5 - 2.6 mm
Material:	Spring: CrNi, Solder plate: CuSn
Weight:	0.18
Pkg.:	12600