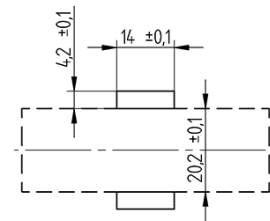
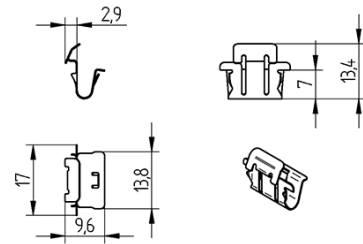


Retaining clip for LED board Quick-Connect-System 28.906.-101.10



0,5 - 0,8

Retaining clip for LED board Quick-Connect-System 28.906.-101.10



DESCRIPTION

For secure fixing of LED modules

Suitable for fixing Signify LED modules Fortimo InstantFit LV1

Easy, tool-less insertion and release of LED modules

Also suitable for additional applications e.g. PCB'S with 1.9 mm thickness. These applications have to be proven by the user.

Technical specification:

- Mounting force retaining clips: < 120 N
- Mounting force LED module in retaining clips: < 60 N*
- Holding force LED module in retaining clips: > 20 N*

*Corresponds to the measured force of the the recommended, parallel arrangement of the retaining clips.

Additional note: The arrangement and number of retaining clips is to be selected by the user.

Clearances and creepage distances: The retaining clips has partly direct contact with the metal sheet and the circuit board. Therefore, the distance "X" is in accordance with the applicable standard, e.g. DIN EN 60598-1, and to be checked by the user.

Product name:	Retaining clip for LED board Quick-Connect-System
Mounting method 1:	Push-in fixing
Material:	CrNi
Weight:	6
Pkg.:	1