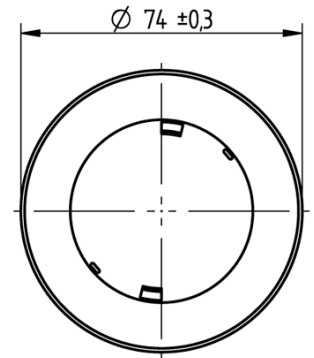
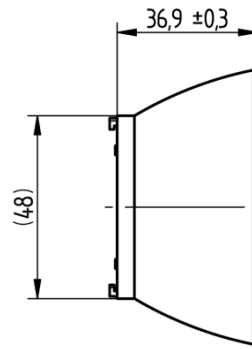


**Reflector Spot, Ø 74 mm, 17°
beam angle**
47.950.-301.56



100°C

Reflector Spot, Ø 74 mm, 17° beam angle 47.950.-301.56



DESCRIPTION

Reflector can only be used by screw fixing the spotlight connector with dome headed screws and locking washer
*Beam angle (FWHM) measured with Citizen CLU38 and connector 47.319.2314.50. Beam angle depends on the COB used.

Country of origin:	DE
Product name:	Reflector Spot, Ø 74 mm, 17° beam angle
Packaging type:	Carton
Packaging quantity:	160.000
Short description:	For use with Spotlight connectors 47.319.2xxx and Spot-, Downlight modules 32.120.xxxx
Beam angle characteristic:	Spot
Beam angle:	17°
Material:	PC
Optical efficiency:	91.1 %
Weight:	32
Pkg.:	160