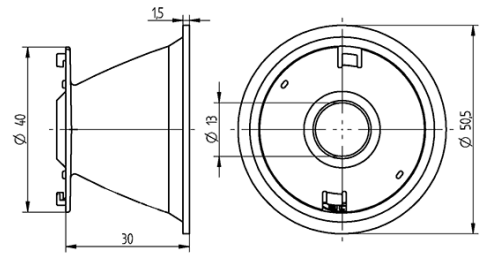


**Reflector Spot, Ø 50.5 mm, 17°
beam angle**
47.940.-313.56



100°C

Reflector Spot, Ø 50.5 mm, 17° beam angle 47.940.-313.56



DESCRIPTION

Reflector can only be used by screw fixing the spotlight connector with dome headed screws and locking washer

*Beam angle (FWHM) measured with Citizen CLU28 and connector 47.319.6294.1010.50. Beam angle depends on the COB used.

Product name:	Reflector Spot, Ø 50.5 mm, 17° beam angle
Short description:	For use with Spotlight connectors 47.319.6060, 47.319.6101, 47.319.6200 and 47.319.6180
Beam angle characteristic:	Spot
Beam angle:	17°
Material:	PC
Weight:	8
Pkg.:	150