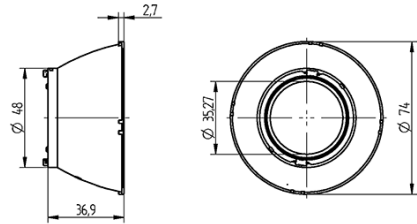


Reflector Flood, Ø 74 mm, 53° beam angle 47.950.-303.56



100°C



Reflector Flood, Ø 74 mm, 53° beam angle 47.950.-303.56



DESCRIPTION

Reflector can only be used by screw fixing the spotlight connector with dome headed screws and locking washer
*Beam angle (FWHM) measured with Citizen CLU38 and connector 47.319.2314.50. Beam angle depends on the COB used.

Packaging type:	Carton
Product name:	Reflector Flood, Ø 74 mm, 53° beam angle
Packaging quantity:	160.000
Short description:	For use with Spotlight connectors 47.319.2xxx and Spot-, Downlight modules 32.120.xxxx
Beam angle characteristic:	Flood
Beam angle:	53°
Material:	PC
Optical efficiency:	90,8%
Weight:	32
Pkg.:	160