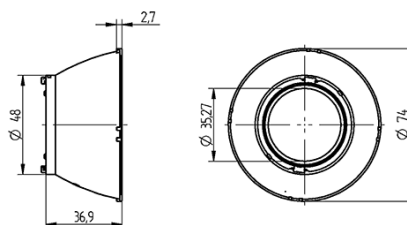


Reflector Flood, Ø 74 mm
47.950.-303.56



100°C



Reflector Flood, Ø 74 mm

47.950.-303.56



DESCRIPTION

Reflector can only be used by screw fixing the spotlight connector with dome headed screws and locking washer
*Beam angle (FWHM) measured with Citizen CLU38 and connector 47.319.2314.50. Beam angle depends on the COB used.

| | |
|----------------------------|--|
| Product name: | Reflector Flood, Ø 74 mm |
| Packaging type: | Carton |
| Packaging quantity: | 160 |
| Short description: | For use with Spotlight connectors 47.319.2xxx and Spot-, Downlight modules 32.120.xxxx |
| Beam angle characteristic: | Flood |
| Material: | PC |
| Weight: | 32 |
| Pkg.: | 160 |