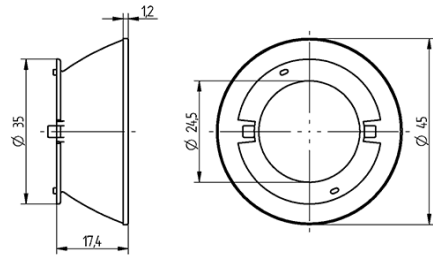


# Reflector Flood, Ø 45 mm, 45° beam angle 47.935.-303.56



# Reflector Flood, Ø 45 mm, 45° beam angle 47.935.-303.56

---



## DESCRIPTION

Reflector can only be used by screw fixing the spotlight connector with dome headed screws and locking washer\*Beam angle (FWHM) measured with Citizen CLU38 and connector 47.360.1010.50. Beam angle depends on the COB used.

Product name:	Reflector Flood, Ø 45 mm, 45° beam angle
Short description:	For use with Spotlight connectors 47.360.10xx
Beam angle characteristic:	Flood
Beam angle:	45°
Material:	PC
Weight:	7
Pkg.:	336