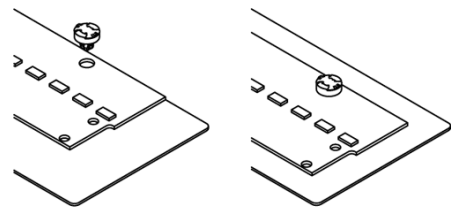
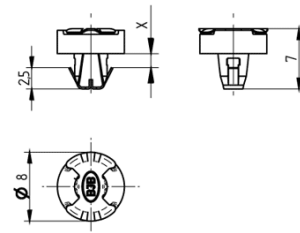
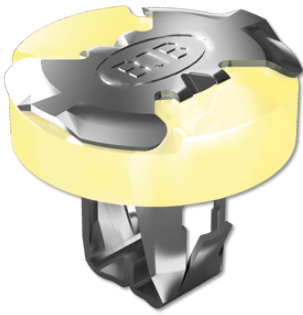


P2F - Push to Fix - Fixing element for PCBs 28.901.U163.10



T 130

Tm 110

U out
500 V



18 AWG 0,5 - 1,0
mm²



0,4 - 2,0



P2F - Push to Fix - Fixing element for PCBs

28.901.U163.10



DESCRIPTION

Quick assembly process improves production efficiency and reduces production costs
Push-in fixing: for hole pattern in light fitting \varnothing 4.2 +/- 0.1 mm and \varnothing 4.3-4,8 mm in PCBs
Reliable heat dissipation by permanent, constant contact pressure with a minimum pressure force of 5 N
CrNi and silicone materials ensure long life reliability
Suitable for Zhaga certified LED modules
BJB recommends to use modules with \varnothing 4,3-4,8 mm fixing hole diameter
Due to manufacturing tolerances and tolerances required for thermal expansion, we recommend choosing the largest possible hole diameter
Eliminates potential damage from screw fixing due to low insertion force
Assembly without any additional tools possible
Solutions for Automation upon request
Removable from front

Product name:	P2F - Push to Fix - Fixing element for PCBs
Country of origin:	DE
Mounting method 1:	Push-in fixing for mounting PCBs
Total thickness (X):	2.0 - 2.4 mm
Material:	CrNi with silicone insulating ring
Color:	transparent yellow
Weight:	2
Pkg.:	5000