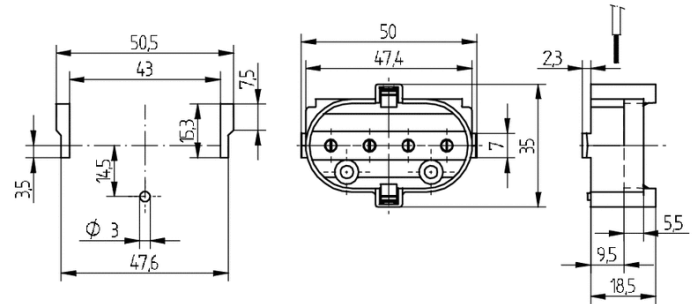




Technology for Light

Lampholder 2G11 26.726.4840.50



T 140

U out
500 V



18 AWG 0,5 - 1,0
mm²



0,8



Technology for Light

Lampholder 2G11

26.726.4840.50

DESCRIPTION

For cable insertion direction please refer to drawing

Product name:	Lampholder 2G11
Short description:	Supports for TC-L lamps
Mounting method 1:	Push-in, end mount
Material:	Housing: PBT
Approval:	additional cULus
cULus file no.:	E-92235
Material thickness:	0.8
Color:	white
Weight:	14
Pkg.:	250