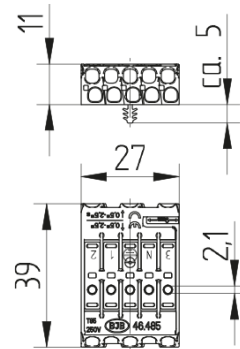
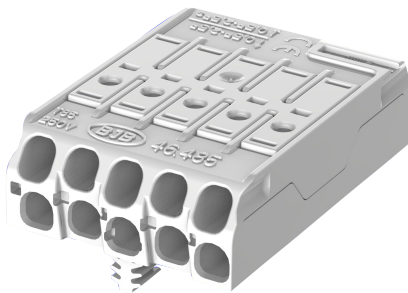
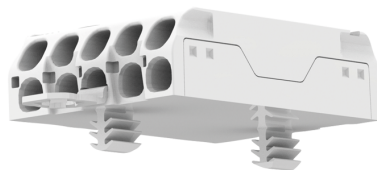


Flat Terminal block 5 poles with snap-in pins Aluprofile 3NEZ12 and contact opening function

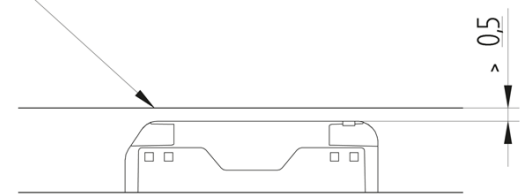
46.485.4111.50



Alustrangpressprofil mit M4 Gewindekanal



Minimum mounting distance
Metal surface



Compliance with creepage distances and clearances has to be ensured by the structural design of the luminaire.

CAD

T 85
-35°C



max. \varnothing 1,8 mm



max. \varnothing 1,8 mm



0,5 - 1,2



24A

250 V
400 V

Flat Terminal block 5 poles with snap-in pins Aluprofile 3NEZ12 and contact opening function

46.485.4111.50



DESCRIPTION

Flat terminal block 5 pole with contact opening function

Upper terminal connection: 0.5 - 2.5 mm²

Direct insertion of solid wire ends and finely stranded wire ends by using the contact opening function

Contact opening function - also for release of already inserted wires

Lower terminal connection:

- 0.5 - 2.5 mm² for solid wire ends

- 1.5 - 2.5 mm² for rigid and stranded wire ends

- Wire release function by twisting and pulling

Strip length: 9 ±1 mm

Top Test openings

Approvals: ÖVE Reg.

Compliance with creepage distances and clearances (eg according to EN 60598) has to be ensured by the structural design of the luminaire.

Suitable for aluminum extrusions with M4 threaded channel by means of plug-in pins

Product name:	Flat Terminal block 5 poles with snap-in pins Aluprofile 3NEZ12 and contact opening function
Mounting method 1:	Snap-in pins Aluprofile 3NEZ12 for use in extruded aluminum profiles with M4 profil groove
Material:	Housing: PA, beige, PC, white
Marking:	3 N ? 1 2
Earth contact:	without grounding strap
Material thickness:	0.5 - 1.2
Contact opening:	With integral cable release
Quantity of poles:	5
Pkg.:	500